

HP Color LaserJet Enterprise 5800 series printers



Product Guide (5800 series)

Powerfully
compact.
Extraordinarily
efficient.

Modern work environments have become more dynamic, requiring teams to be more adaptable in their methods of operation. Stay a step ahead with the powerfully innovative HP Color LaserJet Enterprise 5800 series MFPs and printers; designed to deliver advanced capabilities that help transform your workflows for enhanced productivity and document management. Scalable solutions evolve alongside your business, and the most secure printing technology in the world ensures that your workforce is prepared for what the future brings. Discover how this portfolio can power your business today.



More than a printer,
in a compact footprint



Customizable
and scalable solutions



Fast and seamless
digitization



HP WOLF SECURITY

Always on guard with HP
Wolf Security⁵

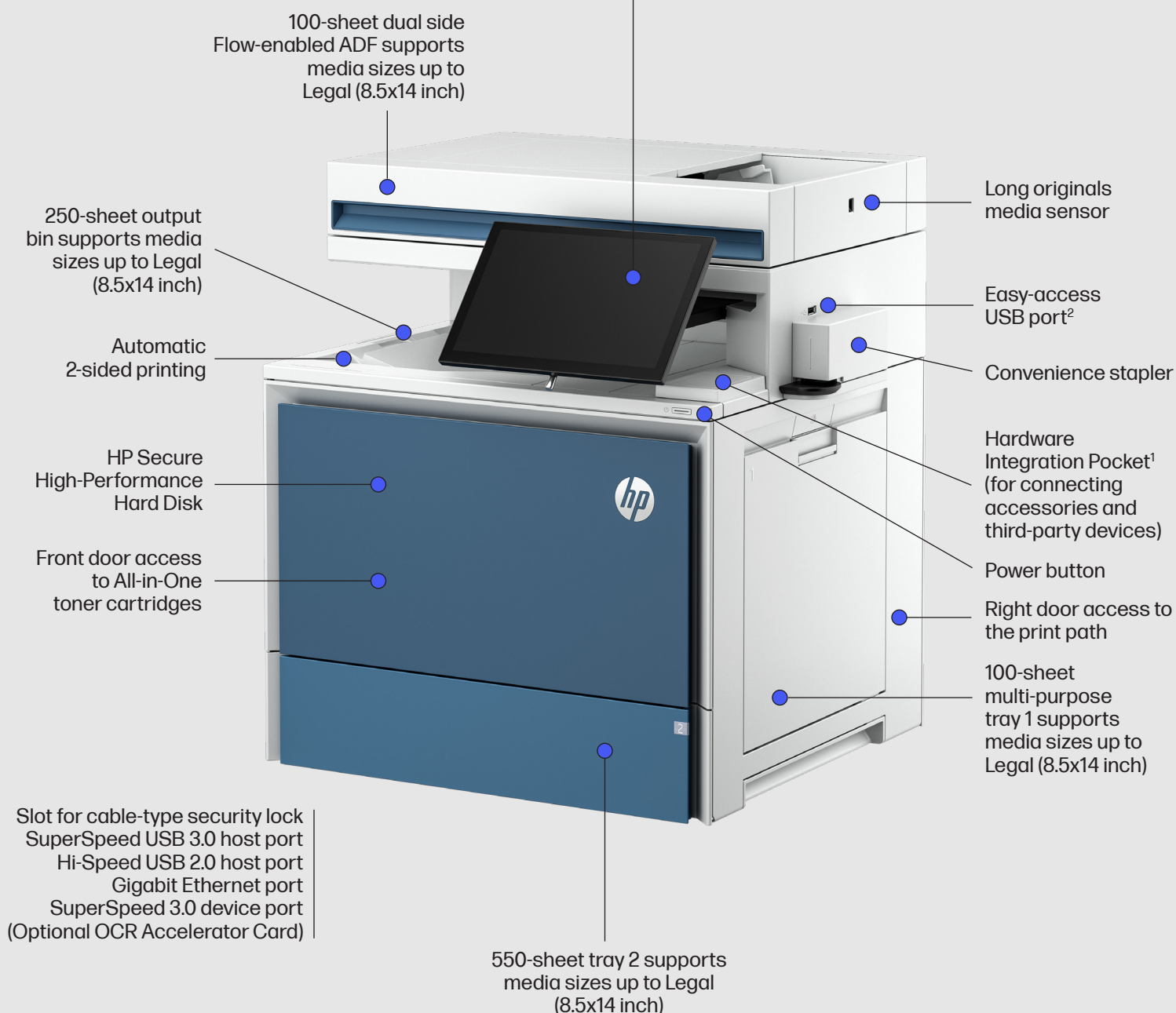
Get to know the HP Color LaserJet Enterprise 5800 series

HP Color LaserJet Enterprise Flow MFP 5800zf shown



10.1-inch color touchscreen display (25.6 cm)

Optional QWERTY physical keyboard attaches only to 10.1-inch color touchscreen display



Series at a glance



Model	HP Color LaserJet Enterprise MFP 5800dn	HP Color LaserJet Enterprise MFP 5800f	HP Color LaserJet Enterprise Flow MFP 5800zf
Product number	6QN29A	6QN30A	58R10A
Functions	Print, copy, and scan (fax and wireless optional) (all models)	Print, copy, scan, and fax (wireless optional) (all models)	Print, copy, scan, and fax (wireless optional) (all models)
Print speed (A4 and letter, black and color) ³	43/45 ppm (A4/letter)	43/45 ppm (A4/letter)	43/45 ppm (A4/letter)
Control panel	8-inch color touchscreen display	8-inch color touchscreen display	10.1-inch color touchscreen display
Scan speed ⁴	50/100 ipm (simplex/duplex)	50/100 ipm (simplex/duplex)	60/120 ipm (simplex/duplex)
RMPV	Up to 10,000 pages per month	Up to 10,000 pages per month	Up to 10,000 pages per month
Input capacity	650/2,300 (std/max)	650/2,300 (std/max)	650/2,300 (std/max)
Output capacity (standard)	250-sheets	250-sheets	250-sheets
Processor	Tri-core 1.2 GHz	Tri-core 1.2 GHz	Tri-core 1.2 GHz
Advanced workflow features	Embedded OCR ⁶	Embedded OCR ⁶	Yes
Workpath-enabled	Yes	Yes	Yes
Extensibility	HP FutureSmart 5, OXPd	HP FutureSmart 5, OXPd	HP FutureSmart 5, OXPd

Footnotes

1. Solutions deployed through the Hardware Integration Pocket (HIP) may require additional purchase.
2. An administrator must enable the Easy-access USB port before use.
3. Measured using ISO/IEC 24734, excludes first set of test documents. For more information, see hp.com/go/printer claims. The exact speed varies depending on the system configuration, software application, driver, and document complexity.
4. Scan speeds measured from ADF. Actual processing speeds may vary depending on scan resolution, network conditions, computer performance, and application software.
5. HP Security is now HP Wolf Security. Security features vary by platform, please see the product data sheet for details.
6. Requires HP FutureSmart 5.8.1.1 or later.

HP Color LaserJet Enterprise MFP 5800dn technical specifications

Processor speed	1.2 GHz			
Orderable supplies	HP LaserJet 110V Fuser Kit 527G0A; HP LaserJet 220V Fuser Kit 527G1A; HP LaserJet 110V Enhanced Fuser Kit 527G6A; HP LaserJet 220V Enhanced Fuser Kit 527G7A; HP LaserJet Image Transfer Belt 527G8A; HP LaserJet Image Transfer Belt Kit 527G9A; HP LaserJet Tray 2 Roller Kit 527H2A; HP LaserJet MP Tray Roller Kit 527H3A; HP LaserJet ADF Maintenance Kit 6H121A			
Printer smart software features	Apple AirPrint™, Mopria-certified, Open Extensibility Platform, FutureSmart firmware, Instant-on Technology, HP Auto-On/Auto-Off technology, Easy-access USB, Two-sided printing, Hardware Integration Pocket, Intuitive 8-in touchscreen control panel, print multiple pages per sheet (2, 4, 6, 9, 16), collation, watermarks, store print jobs, print preview			
Power consumption description	655 watts (Printing/copying), 50.1 watts (Ready), 0.9 watts (Sleep), 0.09 watts (Manual off)			
Power supply	Type	Built-in 110V or 220V Power Supply (not dual voltage, power supply varies by part number with option code identifier)	Required	Input voltage: 100 to 127 VAC, 60 Hz, Input voltage: 200 to 240 VAC, 50 Hz (Not dual voltage, product varies by part number with option code identifier)
What is in the box	HP Color LaserJet Multifunction Printer; HP Black Original LaserJet Toner Cartridge (~7,000 yield), HP Cyan, Magenta, and Yellow Original LaserJet Toner Cartridges (~3,000 yield each) (toner cartridges installed); Documentation (Hardware Installation guide); Power cord			
Replacement cartridges ²	W2130A HP 213A Black Original LaserJet Toner Cartridge (~3,500 pages); W2131A HP 213A Cyan Original LaserJet Toner Cartridge (~3,000 pages); W2132A HP 213A Yellow Original LaserJet Toner Cartridge (~3,000 pages); W2133A HP 213A Magenta Original LaserJet Toner Cartridge (~3,000 pages); W2130X HP 213X High Yield Black Original LaserJet Toner Cartridge (~9,000 pages); W2131X HP 213X High Yield Cyan Original LaserJet Toner Cartridge (~6,000 pages); W2132X HP 213X High Yield Yellow Original LaserJet Toner Cartridge (~6,000 pages); W2133X HP 213X High Yield Magenta Original LaserJet Toner Cartridge (~6,000 pages); W2130Y HP 213Y Extra High Yield Black Original LaserJet Toner Cartridge, (~18,000 pages); W2131Y HP 213Y Extra High Yield Cyan Original LaserJet Toner Cartridge (~12,000 pages); W2132Y HP 213Y Extra High Yield Yellow Original LaserJet Toner Cartridge (~12,000 pages); W2133Y HP 213Y Extra High Yield Magenta Original LaserJet Toner Cartridge (~12,000 pages)			
Supplies feature	TerraJet Cartridge			
Electromagnetic emission standard	CISPR 22:2008 (International) - Class A; CISPR 32:2015 (International) - Class A; EN 55032:2015 + A11:2020 (EU) - Class A; CISPR 35:2016 (International); EN 55035:2017+A11:2020; EN IEC 61000-3-2:2019; EN 61000-3-3:2013 + A1:2019 + A2:2021; FCC CFR 47 Part 15 Class A; ICES-003, Issue 7 Class A; Other EMC approvals as required by individual countries.			
Safety approvals and requirements	IEC 60950-1:2005 + A1:2009 + A2:2013 (International); IEC 62368-1:2014; EN 62368-1:2014 (EU); EN 60825-1:2014 + A11:2021/IEC 60825-1:2014 (Class 1 Laser Product); EN 62479:2010/IEC 62479:2010; Low Voltage Directive 2014/35/EU with CE Mark (Europe); GS certificate (Germany, Europe); UL/cUL Listed and UC CoC (US/Canada); UL62368-1 2 nd Ed. 2014-12-01; CSA C22.2 No. 62368-1-14, 2 nd Ed.; IEC 62471:2006; EN 62471:2008; Compliance with Laser safety standards 21 CFR 1040.10 and 1040.11 except for deviations pursuant to Laser Notice No. 56, dated May 8, 2019; Other safety approvals as required by individual countries			
ENERGY STAR® certified	Yes			
Ecolabels	CECP; IT ECO Declaration; Blue Angel; SEPA; EPEAT® Gold registered; KOECO			
Blue Angel compliance	Yes, Blue Angel DE-UZ 219—only ensured when using Original HP supplies			
Sustainable impact specifications	15% post-consumer recycled plastic; ENERGY STAR® certified; EPEAT® registered			
Network capabilities	**Microsoft Universal Print (MUP) support; via HP Jetdirect Ethernet embedded print server (standard) supports: 10Base-T, 100Base-Tx, 1000Base-T; 802.3az (EEE) support on Fast Ethernet and Gigabit Ethernet; IPsec (standard); 802.11a/b/g/n wireless networking (optional)			

**Requires HP FutureSmart 5.8.1.1 or later.

HP Color LaserJet Enterprise MFP 5800dn technical specifications

Supported network protocols	Via built-in networking solution: TCP/IP, IPv4, IPv6; Print: TCP-IP port 9100 Direct Mode, LPD (raw queue support only), Web Services printing, IPP 2.0, Apple AirPrint™, FTP Print, Google Cloud Print; DISCOVERY: SLP, Bonjour, Web Services Discovery; IP CONFIG: IPv4 (BootP, DHCP, AutoIP, Manual, TFTP Config, ARP-Ping), IPv6 (Stateless Link-Local and via Router, Statefull via DHCPv6); Management: SNMPv2/v3, HTTP/HTTPS, Telnet, TFTP Config, FTP FW Download, Syslog; Security: SNMPv3, SSL Cert Management, Firewall, ACL, 802.1x			
Mobile printing capability	Apple AirPrint™; Mopria™ certified; NFC touch-to-print (optional)			
Copier reduce/enlarge	25 to 400%			
Max. number of copies	Up to 9,999 copies			
Copy resolutions	Black text	Up to 600 x 600 dpi	Color text and graphics	Up to 600 x 600 dpi
Copy speed (Black)	Normal, A4	Up to 43 cpm	Normal, Letter	Up to 45 cpm
Copy speed (Color)	Normal, A4	Up to 43 cpm	Normal, Letter	Up to 45 cpm
Digital sending standard features	**Embedded OCR; *scan to Onedrive; *scan to Onedrive for Business; *scan to Sharepoint Online; scan to e-mail; scan to Network Folder; scan to USB Drive; scan to SharePoint; scan to FTP; scan to SFTP; scan to LAN fax; scan to Internet Fax; local address book; SMTP over SSL; automatically detect color/monochrome; high compression PDF; image adjustments (darkness, contrast, background clean-up, sharpness); optimize text/picture (text, mixed, printed picture, photograph); content orientation; scan mode (book, 2-sided ID); erase edges; auto page crop; job build; image preview; blank page suppression; automatically straighten			
Package dimensions	Metric	758x598x652 mm	Imperial	29.84x23.54x25.67 in
Max. dimensions	Metric	885 x 810 x 828 mm	Imperial	34.8 x 31.9 x 32.6 in
Product dimensions	Metric	500x460x583 mm	Imperial	19.7x18.1x23.0 in
Display description	8.0-in Color Graphic Display (CGD) with touchscreen; rotating (adjustable angle)			
Acoustic power emissions (active, printing)	6.3 B(A)			
Acoustic pressure emissions bystander (ready)	20 dB(A)			
Operating humidity range	10 to 80% RH			
Operating temperature range	Celsius	10 to 32.5°C	Fahrenheit	50 to 91°F
	Recommended celsius	15 to 27°C	Recommended fahrenheit	59 to 80.6°F
Storage Temperature Range	Celsius	-20 to 40°C	Fahrenheit	-4 to 104°F
Operating humidity range (recommended)	30 to 70% RH			
Fax	Optional			
Fax speed (Letter)	3 sec per page			
Fax speed	Up to 33.6 kbps (with optional analog fax accessory)			
Memory	Standard	6 GB	Maximum	6 GB
Print resolution technologies	HP ImageREt 3600, Enhanced (600 x 600 dpi), Fine Lines (1200 x 1200 dpi), Quickview (300 x 300 dpi), PANTONE® calibrated			

*Requires HP FutureSmart 5.8 or later.

**Requires HP FutureSmart 5.8.1.1 or later.

HP Color LaserJet Enterprise MFP 5800dn technical specifications

Print speed	Black (normal, A4)	Up to 43 ppm	Black (normal, Letter)	Up to 45 ppm
	Color (normal, A4)	Up to 43 ppm	Color (normal, Letter)	Up to 45 ppm
	Up to 45 ppm (black) and 45 ppm (color)			
First page out	Black (A4, ready)	As fast as 7.2 sec	Black (Letter, ready)	As fast as 6.7 sec
	Color (A4, ready)	As fast as 7.9 sec	Color (Letter, ready)	As fast as 7.4 sec
Monthly duty cycle	A4	Up to 80,000 pages	Letter	Up to 80,000 pages
Recommended monthly page volume	2,000 to 10,000			
Fonts and typefaces	105 internal TrueType fonts scalable in HP PCL, 92 internal scalable fonts in HP postscript level 3 emulation (Euro symbol built-in); 1 internal Unicode fonts (Andale Mono World Type); 2 internal Windows Vista 8 fonts (Calibri, Cambria); Additional font solutions available via third-party flash memory cards; HP LaserJet Fonts and IPDS Emulation available at http://www.hp.com/go/laserjetfonts			
Hard disk	Standard, 32 GB eMMC; Optional, minimum 500 GB HDD; Optional, 256 GB SSD			
Print languages, standard	XPS, HP PCL 6; HP PCL 5c; HP postscript level 3 emulation, native PDF printing (v 1.7)			
Printer management	HP Web JetAdmin; Embedded Web Server; HP Security Manager; HP Insights; HP Advance; HP Command Center; HP Smart Device Services (SDS)			
Top key features	Automatic Document Feeder; Optional high-capacity trays; Touchscreen; TerraJet Cartridge			
Target number of users and print volume	For teams up to 15 users; Prints up to 10,000 pages/month			
AIO functions	Print, copy, scan, fax (optional)			
Duplex print options	Automatic			
Print technology	Laser			
Paper trays, standard	2			
Capacity, std.	Input	Up to 650 sheets	Output	Up to 250 sheets
Media type and capacity tray 1	Paper: 100 sheets of 75 g/m ² media; Envelopes: 10			
Paper handling standard/input	550-sheet input tray, 100-sheet multi-purpose tray			
Input capacity, Max. envelopes	Up to 10 envelopes			
Product short name	5800			
Typical Electricity Consumption (TEC) number	0.552 kWh/week (ENERGY STAR 3.0); 0.551 kWh/week (Blue Angel)			
Number of simultaneous users (local + network)	5-15 users			
Scan resolution	Hardware	Up to 600 x 600 dpi	Optical	Up to 600 dpi
	Enhanced	Up to 600 dpi		
Scan speed (normal, A4)	Up to 47 ppm/94 ipm (b&w), up to 47 ppm/94 ipm (color)			
Automatic Document Feeder capacity	Standard, 100 sheets			
Color scanning	Yes			
Grayscale levels	256			

HP Color LaserJet Enterprise MFP 5800dn technical specifications

Scan input modes	Front panel applications: Copy; Fax; Scan to Email; Scan to Network Folder; Scan to USB; Scan to Job Storage; Open Extensibility Platform (EXP), HP Workpath applications			
Scan size maximum	ADF, metric	216 x 864 mm	ADF, imperial	8.5 x 34.0 in
	Flatbed, imperial	216 x 356 mm	Flatbed, imperial	8.5 x 14 in
	ADF, metric	68 x 127 mm	ADF, imperial	2.7 x 5 in
Bit depth	24-bit			
TWAIN Version	Version 2.4			
Security management	Identity management: Kerberos authentication; LDAP authentication; 1000-user pin codes; optional HP and 3rd party advanced authentication solutions (e.g. badge readers); Network: IPsec/firewall with certificate; Pre-shared key; Supports WJA-10 IPsec configuration Plug-in; 802.1X authentication (EAP-PEAP; EAP-TLS); SNMPv3; HTTPS; Certificates; Access control list; Data: Storage encryption; Encrypted PDF & Email (uses FIPS 140 validated cryptographic libraries from Microsoft); Secure Erase; SSL/TLS (HTTPS); Encrypted credentials; Device: Security lock slot; USB port disablement; Hardware Integration Pocket for security solutions; Intrusion Detection with Red Balloon Security technology (constant in-device monitoring for attacks); HP Sure Start Secure Boot (BIOS Integrity Checking with self-healing capability); Whitelisting (loads only known good code DLLs, EXEs, etc.); Embedded Trusted Platform Module (TPM); HP Connection Inspector; Security management: Compatible with Device Security Syslog Messages processed and accessible in Arcsight and Splunk SIEMs			
Mac compatible	Yes			
Software included	No software solutions are included in the box, only on http://hp.com http://123.hp.com			
Media types	Paper (plain, light, intermediate, light bond, bond, recycled, mid-weight, heavy, mid-weight glossy, heavy glossy, extra heavy, extra heavy glossy, cardstock, card glossy), color transparency, labels, letterhead, envelope, pre-printed, pre-punched, colored, rough, opaque film, user-defined			
Standard media sizes supported	Metric	Tray 1: A4, A5, A6, RA4, B5, B6, 16k, 10 x 15 cm, Oficio, postcards (JIS single and double) envelopes (DL, C5, B5, C6); Tray 2, optional 1x550-sheet feeders: A4, A5, A6, RA4, B5, B6, 10 x 15 cm, Oficio, 16k, Dpostcard (JIS)	Imperial	Tray 1: Letter, Legal, Executive, Statement, Oficio, 3 x 5 in, 4 x 6 in, 5 x 7 in, 5 x 8 in, envelopes (No. 9, No. 10, Monarch); Tray 2, optional 1x550-sheet feeders: Letter, Legal, Executive, Statement, Oficio, 4 x 6 in, 5 x 7 in, 5 x 8 in
Media sizes custom	Metric	Tray 1: 64 x 127 to 216 x 1200 mm; Tray 2, optional 1x550-sheet feeders: 101 x 148 to 216 x 356 mm	Imperial	Tray 1: 2.52 x 5 to 8.5 x 47.24 in; Tray 2, optional 1x550-sheet feeders: 4 x 5.83 to 8.5 x 14 in
Media size, tray 1 (metric)	A4, A5, A6, RA4, B5, B6, 10 x 15 cm, Oficio 216 x 340, 16k, Postcard (JIS), DPostcard (JIS), Envelopes (DL, C5, B5, C6); custom 64 x 127 to 216 x 1200 mm			
Media weights supported, by paper path	Metric	Tray 1: 60 to 220 g/m ² (plain), 120 to 220 g/m ² (glossy); Tray 2: 60 to 220 g/m ² (plain), 120 to 220 g/m ² (glossy); Optional 550-sheet input trays: 60 to 220 g/m ² (plain), 120 to 220 g/m ² (glossy)	Imperial	Tray 1: 16 to 58 lb (plain), 32 to 58 lb (glossy); Tray 2: 16 to 58 lb (plain), 32 to 58 lb (glossy); Optional 550-sheet input trays: 16 to 58 lb (plain), 32 to 58 lb (glossy)
Media weights supported, tray 1 (metric)	60 to 220 g/m ² (plain), 120 to 220 g/m ² (glossy)			
Media size, ADF	Letter; Legal; Oficio; Executive; Statement; 16K; A4; RA4; A5; A6; B5; B6 (JIS); Postcard (JIS); DPostcard (JIS); 4 x 6 in; 5 x 7 in; 5 x 8 in			
Media weights supported, ADF	Metric	45 to 199 g/m ²	Imperial	12 to 53 lb

HP Color LaserJet Enterprise MFP 5800dn technical specifications

Key media sizes supported	Metric	A4	Imperial	Letter; Legal
Control Panel	8.0-in touchscreen with color graphics			
System requirements	Minimum	2 GB available hard disk space; Internet connection; or USB port; Internet browser. For additional OS hardware requirements, see microsoft.com	Macintosh, minimum	2 GB available hard drive space; Internet connection; or USB port; Internet browser. For additional OS hardware requirements, see apple.com
Manufacturer warranty	One-year Next Business Day Onsite Warranty; Warranty and support options vary by product, country, and local legal requirements. Go to http://www.hp.com/support to learn about HP award-winning service and support options in your region.			
Weight	Metric	38.00 kg	Imperial	83.60 lb
Package weight	Metric	42.89 kg	Imperial	94.36 lb

HP Color LaserJet Enterprise MFP 5800f technical specifications

*

Processor speed	1.2 GHz
Orderable supplies	HP LaserJet 110V Fuser Kit 527G0A; HP LaserJet 220V Fuser Kit 527G1A; HP LaserJet 110V Enhanced Fuser Kit 527G6A; HP LaserJet 220V Enhanced Fuser Kit 527G7A; HP LaserJet Image Transfer Belt 527G8A; HP LaserJet Image Transfer Belt Kit 527G9A; HP LaserJet Tray 2 Roller Kit 527H2A; HP LaserJet MP Tray Roller Kit 527H3A; HP LaserJet ADF Maintenance Kit 6H121A; HP Staple Cartridge Pack (3,000 staples) Q7432A
Printer smart software features	Apple AirPrint™, Mopria-certified, Open Extensibility Platform, FutureSmart firmware, Instant-on Technology, HP Auto-On/Auto-Off technology, Easy-access USB, Two-sided printing, Hardware Integration Pocket, Intuitive 8-in touchscreen control panel, print multiple pages per sheet (2, 4, 6, 9, 16), collation, watermarks, store print jobs, print preview
Power consumption	655 watts printing/copying, 50.1 watts (Ready), 0.9 watts (Sleep), 0.09 watts (Manual off)
Power supply type	Built in 110V or 220V power supply (not dual voltage, power supply varies by part number with option code identifier)
Power supply required	Input voltage: 100V to 127V nominal (+/-10%), 50 - 60 Hz nominal (+/- 3 Hz), 12A; Input voltage: 220V to 240V nominal, (+/-10%) 50 - 60 Hz nominal (+/- 3 Hz), 6A
What is in the box	HP Color LaserJet Multi-function Printer; HP Black Original LaserJet Toner Cartridge (~7,000 yield), HP Cyan, Magenta, and Yellow Original LaserJet Toner Cartridges (~3,000 yield each) (toner cartridges installed); Documentation (Hardware Installation guide); Power cord
Replacement cartridges ²	W2130A HP 213A Black Original LaserJet Toner Cartridge (~3,500 pages); W2131A HP 213A Cyan Original LaserJet Toner Cartridge (~3,000 pages); W2132A HP 213A Yellow Original LaserJet Toner Cartridge (~3,000 pages); W2133A HP 213A Magenta Original LaserJet Toner Cartridge (~3,000 pages); W2130X HP 213X High Yield Black Original LaserJet Toner Cartridge (~9,000 pages); W2131X HP 213X High Yield Cyan Original LaserJet Toner Cartridge (~6,000 pages); W2132X HP 213X High Yield Yellow Original LaserJet Toner Cartridge (~6,000 pages); W2133X HP 213X High Yield Magenta Original LaserJet Toner Cartridge (~6,000 pages); W2130Y HP 213Y Extra High Yield Black Original LaserJet Toner Cartridge, (~18,000 pages); W2131Y HP 213Y Extra High Yield Cyan Original LaserJet Toner Cartridge (~12,000 pages); W2132Y HP 213Y Extra High Yield Yellow Original LaserJet Toner Cartridge (~12,000 pages); W2133Y HP 213Y Extra High Yield Magenta Original LaserJet Toner Cartridge (~12,000 pages)
Supplies feature	TerraJet Cartridge
Electromagnetic emission standard	CISPR 22:2008 (International) - Class A; CISPR 32:2015 (International) - Class A / EN 55032:2015 + A11:2020 (EU) - Class A; CISPR 35:2016 (International); EN 55035:2017+A11:2020; EN IEC 61000-3-2:2019; EN 61000-3-3:2013 + A1:2019 + A2:2021; FCC CFR 47 Part 15 Class A; ICES-003, Issue 7 Class A. Other EMC approvals as required by individual countries.
Safety approvals and requirements	IEC 60950-1:2005 + A1:2009 + A2:2013 (International); IEC 62368-1:2014; EN 62368-1:2014 (EU); EN 60825-1:2014 + A11:2021/IEC 60825-1:2014 (Class 1 Laser Product); EN 62479:2010/IEC 62479:2010; Low Voltage Directive 2014/35/EU with CE Mark (Europe); GS certificate (Germany, Europe); UL/cUL Listed and UC CoC (US/Canada); UL62368-1 2 nd Ed. 2014-12-01, CSA C22.2 No. 62368-1-14, 2 nd Ed.; IEC 62471:2006; EN 62471:2008; Compliance with laser safety standards 21 CFR 1040.10 and 1040.11 except for deviations pursuant to Laser Notice No. 56, dated May 8, 2019; Other safety approvals as required by individual countries.
ENERGY STAR® certified	Yes
Ecolabels	CECP; IT ECO Declaration; Blue Angel; SEPA; EPEAT® Gold registered; KOECO
Blue Angel compliance	Yes, Blue Angel DE-UZ 219—only ensured when using Original HP supplies
Sustainable impact	15% post-consumer recycled plastic; ENERGY STAR® certified; EPEAT® registered
Network capabilities	**Microsoft Universal Print (MUP) support; via HP Jetdirect Ethernet embedded print server (standard) supports: 10Base-T, 100Base-Tx, 1000Base-T; 802.3az (EEE) support on Fast Ethernet and Gigabit Ethernet; IPsec (standard); 802.11a/b/g/n wireless networking (optional)

**Requires HP FutureSmart 5.8.1.1 or later.

HP Color LaserJet Enterprise MFP 5800f technical specifications

Supported network protocols	Via built-in networking solution: TCP/IP, IPv4, IPv6; Print: TCP-IP port 9100 Direct Mode, LPD (raw queue support only), Web Services printing, IPP 2.0, Apple AirPrint™, FTP Print, Google Cloud Print; DISCOVERY: SLP, Bonjour, Web Services Discovery; IP CONFIG: IPv4 (BootP, DHCP, AutoIP, Manual, TFTP Config, ARP-Ping), IPv6 (Stateless Link-Local and via Router, Statefull via DHCPv6); Management: SNMPv2/v3, HTTP/HTTPS, Telnet, TFTP Config, FTP FW Download, Syslog; Security: SNMPv3, SSL Cert Management, Firewall, ACL, 802.1x			
Mobile printing capability	Apple AirPrint™; Mopria™ certified; NFC touch-to-print (optional)			
Copier reduce/enlarge	25 to 400%			
Max. number of copies	Up to 9,999 copies			
Copy resolution	Black text	Up to 600 x 600 dpi	Color text and graphics	Up to 600 x 600 dpi
Copy speed (Black)	Normal, A4	Up to 43 cpm	Normal, Letter	Up to 45 cpm
Copy speed (Color)	Normal, A4	Up to 43 cpm	Normal, Letter	Up to 45 cpm
Digital sending standard features	Embedded OCR; *scan to Onedrive; *scan to Onedrive for Business; *scan to Sharepoint Online; scan to e-mail; scan to Network Folder; scan to USB Drive; scan to SharePoint; scan to FTP; scan to SFTP; scan to LAN Fax; scan to Internet Fax; local address book; SMTP over SSL; automatically detect color/monochrome; high compression PDF; image adjustments (darkness, contrast, background clean-up, sharpness); optimize text/picture (text, mixed, printed picture, photograph); content orientation; scan mode (book, 2-sided ID); erase edges; auto page crop; job build; image preview; blank page suppression; automatically straighten			
Package dimensions	Imperial	29.84x23.54x25.67 in	Metric	758x598x652 mm
Max. dimensions	Imperial	34.8 x 31.9 x 32.6 in	Metric	885 x 810 x 828 mm
Product dimensions	Imperial	21.5x18.1x23.0 in	Metric	547x460x583 mm
Display description	8-in Color Graphic Display (CGD) with touchscreen; rotating (adjustable display)			
Acoustic power emissions (active, printing)	6.3 B(A)			
Acoustic pressure emissions bystander (ready)	21 dB(A)			
Operating humidity range	10 to 80% RH			
Operating humidity range (recommended)	30 to 70% RH			
Operating temperature range	Celsius	10 to 32.5°C	Fahrenheit	50 to 91°F
	Recommended celsius	15 to 27°C	Recommended fahrenheit	59 to 80.6°F
Storage temperature range	Celsius	-20 to 40°C	Fahrenheit	-4 to 104°F
Fax	Yes			
Fax speed (Letter)	3 sec per page			
Fax speed	Up to 33.6 kbps			
Memory	Standard	6 GB	Maximum	6 GB
Print resolution technologies	HP ImageREt 3600, Enhanced (600 x 600 dpi), Fine Lines (1200 x 1200 dpi), Quickview (300 x 300 dpi), PANTONE® calibrated			
Print speed	Up to 45 ppm (black) and 45 ppm (color)			
Print speed (Black)	Normal, A4	Up to 43 ppm	Normal, Letter	Up to 45 ppm
Print speed (Color)	Normal, A4	Up to 43 ppm	Normal, Letter	Up to 45 ppm

*Requires HP FutureSmart 5.8 or later.

HP Color LaserJet Enterprise MFP 5800f technical specifications

First page out (Black)	A4, ready	As fast as 7.2 sec	Letter, ready	As fast as 6.7 sec
First page out (Color)	A4, ready	As fast as 7.9 sec	Letter, ready	As fast as 7.4 sec
Duty cycle	Monthly, A4	Up to 80,000 pages	Monthly, Letter	Up to 80,000 pages
Recommended monthly page volume	2,000 to 10,000			
Fonts and typefaces	105 internal TrueType fonts scalable in HP PCL, 92 internal scalable fonts in HP postscript level 3 emulation (Euro symbol built-in); 1 internal Unicode fonts (Andale Mono World Type); 2 internal Windows Vista 8 fonts (Calibri, Cambria); Additional font solutions available via third-party flash memory cards; HP LaserJet Fonts and IPDS Emulation available at http://www.hp.com/go/laserjetfonts			
Hard disk	Standard, 32 GB eMMC; Optional, minimum 500 GB HDD; Optional, 256 GB SSD			
Print languages, standard	XPS, HP PCL 6; HP PCL 5c; HP postscript level 3 emulation, native PDF printing (v 1.7)			
Printer management	HP Web JetAdmin; Embedded Web Server; HP Security Manager; HP Insights; HP Advance; HP Command Center; HP Smart Device Services (SDS)			
Top key features	Automatic Document Feeder; Optional high-capacity trays; Touchscreen; TerraJet Cartridge			
Target number of users and print volume	For teams up to 15 users; Prints up to 10,000 pages/month			
AIO functions	Print, copy, scan, fax			
Duplex print options	Automatic			
Print technology	Laser			
Paper trays, standard	2			
Capacity, Std.	Input	Up to 650 sheets	Output	Up to 250 sheets
Media type and capacity tray 1	Paper: 100 sheets of 75 g/m² media; Envelopes: 10			
Paper handling, Std.	Input	550-sheet input tray, 100-sheet multi-purpose tray	Output	convenience stapler
Input capacity, max. envelopes	Up to 10 envelopes			
Product short name	5800			
Typical Electricity Consumption (TEC) number	0.552 kWh/week (ENERGY STAR 3.0); 0.551 kWh/week (Blue Angel)			
Number of simultaneous users (local + network)	5-15 users			
Scan resolution	Hardware	Up to 600 x 600 dpi		
	Optical	Up to 600 dpi		
	Enhanced	Up to 600 dpi		
Scan speed (normal, A4)	Up to 47 ppm/94 ipm (b&w), up to 47 ppm/94 ipm (color)			
Automatic Document Feeder capacity	Standard, 100 sheets			
Color scanning	Yes			
Grayscale levels	256			
Scan input modes	Front panel applications: Copy; Fax; Scan to Email; Scan to Network Folder; Scan to USB; Scan to Job Storage; Open Extensibility Platform (OXP); HP Workpath applications			

HP Color LaserJet Enterprise MFP 5800f technical specifications

Scan size maximum	ADF, metric	216 x 864 mm	ADF, imperial	8.5 x 34.0 in
	Flatbed, metric	216 x 356 mm	Flatbed, imperial	8.5 x 14 in
Scan size minimum	ADF, metric	68 x 127 mm	ADF, imperial	2.7 x 5 in
Bit depth	24-bit			
TWAIN Version	Version 2.4			
Security management	Identity management: Kerberos authentication; LDAP authentication; 1,000-user pin codes; optional HP and 3 rd party advanced authentication solutions (e.g. badge readers); Network: IPsec/firewall with certificate; Pre-shared key; and Kerberos authentication; Supports WJA-10 IPsec configuration Plug-in; 802.1X authentication (EAP-PEAP; EAP-TLS); SNMPv3; HTTPS; Certificates; Access Control List; Data: Storage encryption; Encrypted PDF & Email (uses FIPS 140 validated cryptographic libraries from Microsoft); Secure Erase; SSL/TLS (HTTPS); Encrypted credentials; Device: Security lock slot; USB port disablement; Hardware Integration Pocket for security solutions; Intrusion Detection with Red Balloon Security technology (Constant in-device monitoring for attacks); HP Sure Start Secure Boot (BIOS Integrity Checking with self-healing capability); Whitelisting (loads only known good code DLLs, EXEs, etc.); Embedded Trusted Platform Module (TPM); HP Connection Inspector; Security management: Compatible with Device Security Syslog Messages processed and accessible in Arcsight and Splunk SIEMs			
Services (Care Pack)	U45Q5E - HP 3-year Next Business Day with DMR Service for Color LaserJet Enterprise MFP 580x ; U45Q6E - HP 4-year Next Business Day with DMR Service for Color LaserJet Enterprise MFP 580x ; U45Q7E - HP 5-year Next Business Day with DMR Service for Color LaserJet Enterprise MFP 580x ; U45Q8E - HP 3-year 4-hour 9x5 with DMR Service for Color LaserJet Enterprise MFP 580x ; U45Q9E - HP 4-year 4-hour 9x5 with DMR Service for Color LaserJet Enterprise MFP 580x;U45QBE - HP 5-year 4-hour 9x5 with DMR Service for Color LaserJet Enterprise MFP 580x ; U45QCE - HP 3-year Next Business Day Call-to-Repair with DMR Service for Color LaserJet Enterprise MFP 580x ; U45QDE - HP 4-year Next Business Day Call-to-Repair with DMR Service for Color LaserJet Enterprise MFP 580x ; U45QFE - HP 5-year Next Business Day Call to Repair with DMR Service for Color LaserJet Enterprise MFP 580x ; U45QGE - HP 3-year Channel Parts Exchange with DMR Service for Color LaserJet Enterprise MFP 580x ; U45QHE - HP 4-year Channel Parts Exchange with DMR Service for Color LaserJet Enterprise MFP 580x ; U45QJE - HP 5 year Channel Parts Exchange with DMR Service for Color LaserJet Enterprise MFP 580x ; U45QKPE - HP 1-year Post Warranty Next Business Day with DMR Service for Color LaserJet Enterprise MFP 580x ; U45QLPE - HP 2-year Post Warranty Next Business Day with DMR Service for Color LaserJet Enterprise MFP 580x ; U45QMPE - HP 1-year Post Warranty 4-hour 9x5 with DMR Service for Color LaserJet Enterprise MFP 580x ; U45QNPE - HP 2 year Post Warranty 4 hour 9x5 with DMR Service for Color LaserJet Enterprise MFP 580x ; U45QOPE - HP 1-year PW NBD Call to Repair with DMR Service for Color LaserJet Enterprise MFP 580x ; U45QRPE - HP 2-year PW NBD Call to Repair with DMR Service for Color LaserJet Enterprise MFP 580x ; U45QSPE - HP 1-year PW Channel Parts Exchange with DMR Service for Color LaserJet Enterprise MFP 580x ; U45QTPE - HP 2-year PW Channel Parts Exchange with DMR Service for Color LaserJet Enterprise MFP 580x ; U9JT2E - HP Installation Service with network configuration for workgroup printer (1 unit) ; U45V7E - HP Maintenance Kit Replacement Service for Color LaserJet Enterprise MFP 580x X579xx Fuser 110 ; U45V8E - HP Maintenance Kit Replacement Service for Color LaserJet Enterprise MFP 580x X579xx Fuser 110 Enhanced ; U45V9E - HP Maintenance Kit Replacement Service for Color LaserJet Enterprise MFP 580x X579xx Fuser 220 ; U45VBE - HP Maintenance Kit Replacement Service for Color LaserJet Enterprise MFP 580x X579xx Fuser 220 Enhanced ; U45VCE - HP Maintenance Kit Replacement Service for Color LaserJet Enterprise MFP 580x X579xx ITB ; U45VDE - HP Maintenance Kit Replacement Service for Color LaserJet Enterprise MFP 580x X579xx ITB Kit ; U45VFE - HP Maintenance Kit Replacement Service for Color LaserJet Enterprise MFP 580x X579xx TCU ; U45VGE - HP Maintenance Kit Replacement Service for Color LaserJet Enterprise MFP 580x X579xx MP Tray Roller ; U45VHE - HP Maintenance Kit Replacement Service for Color LaserJet Enterprise MFP 580x X579xx Tray 2 Roller			
Mac compatible	Yes			
Software included	No software solutions are included in the box, only on http://hp.com , http://123.hp.com			

HP Color LaserJet Enterprise MFP 5800f technical specifications

Media types	Paper (plain, light, intermediate, light bond, bond, recycled, mid-weight, heavy, mid-weight glossy, heavy glossy, extra heavy, extra heavy glossy, cardstock, card glossy), color transparency, labels, letterhead, envelope, pre-printed, pre-punched, colored, rough, opaque film, user-defined			
Standard media sizes supported	Metric	Tray 1: A4, A5, A6, RA4, B5, B6, 16k, 10 x 15 cm, Oficio, postcards (JIS single and double), envelopes (DL, C5, B5, C6); Tray 2, optional 1x550-sheet feeders: A4, A5, A6, RA4, B5, B6, 10 x 15 cm, Oficio, 16k, Dpostcard (JIS)	Imperial	Tray 1: Letter, Legal, Executive, Statement, Oficio, 3 x 5 in, 4 x 6 in, 5 x 7 in, 5 x 8 in, envelopes (No. 9, No. 10, Monarch); Tray 2, optional 1x550-sheet feeders: Letter, Legal, Executive, Statement, Oficio, 4 x 6 in, 5 x 7 in, 5 x 8 in
Media sizes custom	Metric	Tray 1: 64 x 127 to 216 x 1,200 mm; Tray 2, optional 1x550-sheet feeders: 101 x 148 to 216 x 356 mm	Imperial	Tray 1: 2.52 x 5 to 8.5 x 47.24 in; Tray 2, optional 1x550-sheet feeders: 4 x 5.83 to 8.5 x 14 in
Media size, tray 1 (metric)	A4, A5, A6, RA4, B5, B6, 10 x 15 cm, Oficio 216 x 340, 16k, Postcard (JIS), DPostcard (JIS), Envelopes (DL, C5, B5, C6); custom 64 x 127 to 216 x 1,200 mm			
Media weights supported, by paper path	Metric	Tray 1: 60 to 220 g/m ² (plain), 120 to 220 g/m ² (glossy); Tray 2: 60 to 220 g/m ² (plain), 120 to 220 g/m ² (glossy); Optional 550-sheet input trays: 60 to 220 g/m ² (plain), 120 to 220 g/m ² (glossy)	Imperial	Tray 1: 16 to 58 lb (plain), 32 to 58 lb (glossy); Tray 2: 16 to 58 lb (plain), 32 to 58 lb (glossy); Optional 550-sheet input trays: 16 to 58 lb (plain), 32 to 58 lb (glossy)
Media weights supported, tray 1, (metric)	60 to 220 g/m ² (plain), 120 to 220 g/m ² (glossy)			
Media size, ADF	Letter; Legal; Oficio; Executive; Statement; 16K; A4; RA4; A5; A6; B5; B6 (JIS); Postcard (JIS); DPostcard (JIS); 4 x 6 in; 5 x 7 in; 5 x 8 in			
Media weights supported, ADF	Metric	45 to 199 g/m ²	Imperial	12 to 53 lb
Key media sizes supported	Metric	A4	Imperial	Letter; Legal
Control panel	8-in touchscreen with color graphics			
System requirements, Macintosh, minimum	2 GB available hard drive space; Internet connection; or USB port; Internet browser; For additional OS hardware requirements, see apple.com			
System requirements, minimum	2 GB available hard disk space; Internet connection; or USB port; Internet browser. For additional OS hardware requirements, see microsoft.com;			
Manufacturer warranty	One-year Next Business Day Onsite Warranty; Warranty and support options vary by product, ccountry, and local legal requirements. Go to http://www.hp.com/support to learn about HP award-winning service and support options in your region.			
Weight	Metric	38.90 kg	Imperial	85.58 lb
Package weight	Metric	43.79 kg	Imperial	96.34 lb

HP Color LaserJet Enterprise Flow MFP 5800zf technical specifications

Processor speed	1.2 GHz
Orderable supplies	HP LaserJet 110V Fuser Kit 527G0A; HP LaserJet 220V Fuser Kit 527G1A; HP LaserJet 110V Enhanced Fuser Kit 527G6A; HP LaserJet 220V Enhanced Fuser Kit 527G7A; HP LaserJet Image Transfer Belt 527G8A; HP LaserJet Image Transfer Belt Kit 527G9A; HP LaserJet Tray 2 Roller Kit 527H2A; HP LaserJet MP Tray Roller Kit 527H3A; HP LaserJet ADF Maintenance Kit 6H121A; HP Staple Cartridge Pack (3,000 staples) Q7432A
Printer smart software features	Apple AirPrint™, Mopria-certified, Open Extensibility Platform, FutureSmart firmware, Instant-on Technology, HP Auto-On/Auto-Off technology, Easy-access USB, Two-sided printing, Hardware Integration Pocket, Intuitive 10.1-in touchscreen control panel, print multiple pages per sheet (2, 4, 6, 9, 16), collation, watermarks, store print jobs, print preview
Power consumption description	655 watts (Printing/copying), 50.1 watts (Ready), 0.9 watts (Sleep), 0.09 watts (Manual off)
Power supply type	Built in 110V or 200V power supply (not dual voltage, power supply varies by part number with option code identifier)
Power supply required	Input voltage: 100V to 127V nominal (+/-10%), 50 - 60 Hz nominal (+/- 3 Hz), 12A; Input voltage: 220V to 240V nominal, (+/-10%) 50 - 60 Hz nominal (+/- 3 Hz), 6A
What is in the box	HP Color LaserJet Multifunction Printer; HP Black Original LaserJet Toner Cartridge (~7,000 yield), HP Cyan, Magenta, and Yellow Original LaserJet Toner Cartridges (~3,000 yield each) (toner cartridges installed); Documentation (Hardware Installation guide); Power cord
Replacement cartridges ²	W2130A HP 213A Black Original LaserJet Toner Cartridge (~3,500 pages); W2131A HP 213A Cyan Original LaserJet Toner Cartridge (~3,000 pages); W2132A HP 213A Yellow Original LaserJet Toner Cartridge (~3,000 pages); W2133A HP 213A Magenta Original LaserJet Toner Cartridge (~3,000 pages); W2130X HP 213X High Yield Black Original LaserJet Toner Cartridge (~9,000 pages); W2131X HP 213X High Yield Cyan Original LaserJet Toner Cartridge (~6,000 pages); W2132X HP 213X High Yield Yellow Original LaserJet Toner Cartridge (~6,000 pages); W2133X HP 213X High Yield Magenta Original LaserJet Toner Cartridge (~6,000 pages); W2130Y HP 213Y Extra High Yield Black Original LaserJet Toner Cartridge (~18,000 pages); W2131Y HP 213Y Extra High Yield Cyan Original LaserJet Toner Cartridge (~12,000 pages); W2132Y HP 213Y Extra High Yield Yellow Original LaserJet Toner Cartridge (~12,000 pages); W2133Y HP 213Y Extra High Yield Magenta Original LaserJet Toner Cartridge (~12,000 pages)
Supplies feature	TerraJet Cartridge
Electromagnetic emission standard	CISPR 22:2008 (International) Class A, CISPR 32:2015 (International) Class A / EN 55032:2015 Class A + A1:2020, CISPR 35:2016 (International) / EN 55035:2017 + A1:2020, EN IEC 61000-3-2:2019, EN 61000-3-3:2013 + A1:2019 + A2:2021, FCC 47 CFR Part 15 Class A, ICES-003, Issue 7 Class A; Other EMC approvals as required by individual countries.
Safety approvals and requirements	IEC 60950-1:2005 + A1:2009 + A2:2013 (International); IEC 62368-1:2014; EN 62368-1:2014 (EU); EN 60825-1:2014 + A1:2021/IEC 60825-1:2014 (Class 1 Laser Product); EN 62479:2010/IEC 62479:2010; Low Voltage Directive 2014/35/EU with CE Mark (Europe); GS certificate (Germany, Europe); UL/cUL Listed and UC CoC (US/Canada); UL62368-1 2 nd Ed. 2014-12-01, CSA C22.2 No. 62368-1-14, 2 nd Ed.; Compliance with laser safety standards 21 CFR 1040.10 and 1040.11 except for deviations pursuant to Laser Notice No. 56, dated May 8, 2019; Other safety approvals as required by individual countries.
ENERGY STAR® certified	Yes
Ecolabels	CECP; IT ECO Declaration; Blue Angel; EPEAT® Gold registered; SEPA; KOECO
Blue Angel compliance	Yes, Blue Angel DE-UZ 219—only ensured when using Original HP supplies
Sustainable impact specifications	15% post-consumer recycled plastic; ENERGY STAR® certified; EPEAT® registered
Network capabilities	**Microsoft Universal Print (MUP) support; via HP Jetdirect Ethernet embedded print server (standard) supports: 10Base-T, 100Base-Tx, 1000Base-T; 802.3az (EEE) support on Fast Ethernet and Gigabit Ethernet; IPsec (standard); 802.11a/b/g/n wireless networking (optional)

**Requires HP FutureSmart 5.8.1.1 or later.

HP Color LaserJet Enterprise Flow MFP 5800zf technical specifications

Supported network protocols	Via built-in networking solution: TCP/IP, IPv4, IPv6; Print: TCP-IP port 9100 Direct Mode, LPD (raw queue support only), Web Services printing, IPP 2.0, Apple AirPrint™, FTP Print, Google Cloud Print; DISCOVERY: SLP, Bonjour, Web Services Discovery; IP CONFIG: IPv4 (BootP, DHCP, AutoIP, Manual, TFTP Config, ARP-Ping), IPv6 (Stateless Link-Local and via Router, Statefull via DHCPv6); Management: SNMPv2/v3, HTTP/HTTPS, Telnet, TFTP Config, FTP FW Download, Syslog; Security: SNMPv3, SSL Cert Management, Firewall, ACL, 802.1x			
Mobile printing capability	Apple AirPrint™; Mopria™ certified; NFC touch-to-print (optional)			
Copier reduce/enlarge	25 to 400%			
Max. number of copies	Up to 9,999 copies			
Copy resolution	Black text	Up to 600 x 600 dpi	Color text and graphics	Up to 600 x 600 dpi
Copy speed	Black (normal, A4)	Up to 43 cpm	Black (normal, Letter)	Up to 45 cpm
	Color (normal, A4)	Up to 43 cpm	Color (normal, Letter)	Up to 45 cpm
Digital sending standard features	Embedded OCR; *scan to Onedrive; *scan to Onedrive for Business; *scan to Sharepoint Online; scan to e-mail; scan to Network Folder; scan to USB Drive; scan to SharePoint; scan to FTP; scan to SFTP; scan to LAN Fax; scan to Internet Fax; local address book; SMTP over SSL; automatically detect color / monochrome; high compression PDF; image adjustments (darkness, contrast, background clean-up, sharpness); optimize text/picture (text, mixed, printed picture, photograph); content orientation; scan mode (book, 2-sided ID); erase edges; auto page crop; job build; image preview; blank page suppression; automatically straighten; embedded OCR; optimize text/picture (auto); Scan to multi-destination; automatic tone; auto orientation; multi-feed detection; Reverse and Retry; document editing; auto paper color removal; job separation (blank page, barcode); watermark; stamps			
Package dimensions	Metric	758x598x652 mm	Imperial	29.84x23.54x25.67 in
Max. dimensions	Metric	885 x 810 x 828 mm	Imperial	34.8 x 31.9 x 32.6 in
Product dimensions	Metric	547x460x583 mm	Imperial	21.5x18.1x23.0 in
Display description	10.1-in Color Graphic Display (CGD) with touchscreen; rotating (adjustable angle)			
Acoustic power emissions (active, printing)	6.3 B(A)			
Acoustic pressure emissions bystander (ready)	22 dB(A)			
Operating humidity range	10 to 80% RH			
Operating temperature range	Celsius	10 to 32.5°C	Fahrenheit	50 to 91°F
	Recommended celsius	15 to 27°C	Recommended fahrenheit	59 to 80.6°F
Storage Temperature Range	Celsius	-20 to 40°C	Fahrenheit	-4 to 104°F
Operating humidity range (recommended)	30 to 70% RH			
Fax	Yes			
Fax speed (Letter)	3 sec per page			
Fax speed	Up to 33.6 kbps			
Memory	Standard	6 GB	Maximum	6 GB
Print resolution technologies	HP ImageREt 3600, Enhanced (600 x 600 dpi), Fine Lines (1200 x 1200 dpi), Quickview (300 x 300 dpi), PANTONE® calibrated			

*Requires HP FutureSmart 5.8 or later.

HP Color LaserJet Enterprise Flow MFP 5800zf technical specifications

Print speed	Black (normal, A4)	Up to 43 ppm	Black (normal, Letter)	Up to 45 ppm
	Color (normal, A4)	Up to 43 ppm	Color (normal, Letter)	Up to 45 ppm
	Up to 45 ppm (black) and 45 ppm (color)			
First page out (Black)	(A4, ready)	As fast as 6.8 sec	(letter, ready)	As fast as 6.7 sec
First page out (Color)	(A4, ready)	As fast as 7.4 sec	(letter, ready)	As fast as 7.3 sec
Monthly duty cycle	A4	Up to 80,000 pages	Letter	Up to 80,000 pages
Recommended monthly page volume	2,000 to 10,000			
Fonts and typefaces	105 internal TrueType fonts scalable in HP PCL, 92 internal scalable fonts in HP postscript level 3 emulation (Euro symbol built-in); 1 internal Unicode fonts (Andale Mono World Type); 2 internal Windows Vista 8 fonts (Calibri, Cambria); Additional font solutions available via third-party flash memory cards; HP LaserJet Fonts and IPDS Emulation available at http://www.hp.com/go/laserjetfonts			
Hard disk	Standard, minimum 500 GB HDD; Optional, 256 GB SSD			
Print languages, standard	XPS, HP PCL 6; HP PCL 5c; HP postscript level 3 emulation, native PDF printing (v 1.7)			
Printer management	HP Web JetAdmin; Embedded Web Server; HP Security Manager; HP Insights; HP Advance; HP Command Center; HP Smart Device Services (SDS)			
Top Key Features	Automatic document feeder; Optional high-capacity trays; Touchscreen; TerraJet Cartridge			
Target number of users and print volume	For teams up to 15 users; Prints up to 10,000 pages/month			
AIO functions	Print, copy, scan, fax			
Duplex print options	Automatic			
Print technology	Laser			
Paper trays, standard	2			
Capacity, std.	Input	Up to 650 sheets	Output	Up to 250 sheets
Media type and capacity tray 1	Paper: 100 sheets of 75 g/m² media; Envelopes: 10			
Paper handling standard	Input	550-sheet input tray, 100-sheet multi-purpose tray	Output	Convenience stapler
Input capacity, max. envelopes	Up to 10 envelopes			
Product short name	5800			
Typical Electricity Consumption (TEC) number	0.552 kWh/week (ENERGY STAR 3.0); 0.551 kWh/week (Blue Angel)			
Number of simultaneous users (local + network)	5-15 users			
Scan resolution	Hardware	Up to 600 x 600 dpi	Optical	Up to 600 dpi
	Enhanced	Up to 600 dpi		
Scan speed (normal, A4)	Up to 56 ppm/112 ipm (b&w), up to 56 ppm/112 ipm (color)			
Automatic Document Feeder capacity	Standard, 100 sheets			
Color scanning	Yes			

HP Color LaserJet Enterprise Flow MFP 5800zf technical specifications

Grayscale levels	256			
Scan input modes	Front panel applications: Copy; E-mail; Fax; Save to Network Folder; Save to USB; Save to Device Memory; Open Extensibility Platform (OXF) applications			
Scan size maximum	ADF, metric	216 x 864 mm	ADF, imperial	8.5 x 34.0 in
	Flatbed, metric	216 x 356 mm	Flatbed, imperial	8.5 x 14.0 in
Scan size minimum	ADF, metric	68 x 127 mm	ADF, imperial	2.7 x 5.0 in
Bit depth	24-bit			
TWAIN Version	Version 2.4			
Security management	Identity management: Kerberos authentication; LDAP authentication; 1,000-user pin codes; Optional HP and 3 rd party advanced authentication solutions (e.g. badge readers); Network: IPsec/firewall with certificate; Pre-shared key; Supports WJA-10 IPsec configuration Plug-in; 802.1X authentication (EAP-PEAP; EAP-TLS); SNMPv3; HTTPS; Certificates; Access control list; Data: Storage encryption; Encrypted PDF & Email (uses FIPS 140 validated cryptographic libraries from Microsoft); Secure Erase; SSL/TLS (HTTPS); Encrypted credentials; Device: Security lock slot; USB port disablement; Hardware Integration Pocket for security solutions; Intrusion Detection with Red Balloon Security technology (constant in-device monitoring for attacks); HP Sure Start Secure Boot (BIOS Integrity Checking with self-healing capability); Whitelisting (loads only known good code DLLs, EXEs, etc.); Embedded Trusted Platform Module (TPM); HP Connection Inspector; Security management: Compatible with Device Security Syslog Messages processed and accessible in Arcsight and Splunk SIEMs			
Services (Care Pack)	U45Q5E - HP 3-year Next Business Day with DMR Service for Color LaserJet Enterprise MFP 580x; U45Q6E - HP 4-year Next Business Day with DMR Service for Color LaserJet Enterprise MFP 580x; U45Q7E - HP 5-year Next Business Day with DMR Service for Color LaserJet Enterprise MFP 580x; U45Q8E - HP 3-year 4-hour 9x5 with DMR Service for Color LaserJet Enterprise MFP 580x; U45Q9E - HP 4-year 4-hour 9x5 with DMR Service for Color LaserJet Enterprise MFP 580x; U45QBE - HP 5-year 4-hour 9x5 with DMR Service for Color LaserJet Enterprise MFP 580x; U45QCE - HP 3-year Next Business Day Call-to-Repair with DMR Service for Color LaserJet Enterprise MFP 580x; U45QDE - HP 4-year Next Business Day Call-to-Repair with DMR Service for Color LaserJet Enterprise MFP 580x; U45QFE - HP 5-year Next Business Day Call-to-Repair with DMR Service for Color LaserJet Enterprise MFP 580x; U45QGE - HP 3-year Channel Parts Exchange with DMR Service for Color LaserJet Enterprise MFP 580x; U45QHE - HP 4-year Channel Parts Exchange with DMR Service for Color LaserJet Enterprise MFP 580x; U45QJE - HP 5-year Channel Parts Exchange with DMR Service for Color LaserJet Enterprise MFP 580x; U45QKPE - HP 1-year Post Warranty Next Business Day with DMR Service for Color LaserJet Enterprise MFP 580x; U45QLPE - HP 2-year Post Warranty Next Business Day with DMR Service for Color LaserJet Enterprise MFP 580x; U45QMPE - HP 1-year Post Warranty 4-hour 9x5 with DMR Service for Color LaserJet Enterprise MFP 580x; U45QNPE - HP 2-year Post Warranty 4-hour 9x5 with DMR Service for Color LaserJet Enterprise MFP 580x; U45QOPE - HP 1-year PW NBD Call-to-Repair with DMR Service for Color LaserJet Enterprise MFP 580x; U45QORPE - HP 2-year PW NBD Call-to-Repair with DMR Service for Color LaserJet Enterprise MFP 580x; U45QSPE - HP 1-year PW Channel Parts Exchange with DMR Service for Color LaserJet Enterprise MFP 580x; U45QTPE - HP 2-year PW Channel Parts Exchange with DMR Service for Color LaserJet Enterprise MFP 580x; U9JT2E - HP Installation Service with network configuration for workgroup printer (1 unit); U45V7E - HP Maintenance Kit Replacement Service for Color LaserJet Enterprise MFP 580x X579xx Fuser 110; U45V8E - HP Maintenance Kit Replacement Service for Color LaserJet Enterprise MFP 580x X579xx Fuser 110 Enhanced; U45V9E - HP Maintenance Kit Replacement Service for Color LaserJet Enterprise MFP 580x X579xx Fuser 220; U45VBE - HP Maintenance Kit Replacement Service for Color LaserJet Enterprise MFP 580x X579xx Fuser 220 Enhanced; U45VCE - HP Maintenance Kit Replacement Service for Color LaserJet Enterprise MFP 580x X579xx ITB; U45VDE - HP Maintenance Kit Replacement Service for Color LaserJet Enterprise MFP 580x X579xx ITB Kit; U45VFE - HP Maintenance Kit Replacement Service for Color LaserJet Enterprise MFP 580x X579xx TCU; U45VGE - HP Maintenance Kit Replacement Service for Color LaserJet Enterprise MFP 580x X579xx MP Tray Roller; U45VHE - HP Maintenance Kit Replacement Service for Color LaserJet Enterprise MFP 580x X579xx Tray 2 Roller			
Mac compatible	Yes			

HP Color LaserJet Enterprise Flow MFP 5800zf technical specifications

Software included	No software solutions are included in the box, only on http://hp.com http://123.hp.com ;			
Media types	Paper (plain, light, intermediate, light bond, bond, recycled, mid-weight, heavy, mid-weight glossy, heavy glossy, extra heavy, extra heavy glossy, cardstock, card glossy), color transparency, labels, letterhead, envelope, pre-printed, pre-punched, colored, rough, opaque film, user-defined			
Standard media sizes supported	Metric	Tray 1: A4, A5, A6, RA4, B5, B6, 16k, 10 x 15 cm, Oficio, postcards (JIS single and double) envelopes (DL, C5, B5, C6); Tray 2, optional 1x550-sheet feeders: A4, A5, A6, RA4, B5, B6, 10 x 15 cm, Oficio, 16k, Dpostcard (JIS)	Imperial	Tray 1: Letter, Legal, Executive, Statement, Oficio, 3 x 5 in, 4 x 6 in, 5 x 7 in, 5 x 8 in, envelopes (No. 9, No. 10, Monarch); Tray 2, optional 1x550-sheet feeders: Letter, Legal, Executive, Statement, Oficio, 4 x 6 in, 5 x 7 in, 5 x 8 in
Media sizes custom	Metric	Tray 1: 64 x 127 to 216 x 1200 mm; Tray 2, optional 1x550-sheet feeders: 101 x 148 to 216 x 356 mm	Imperial	Tray 1: 2.52 x 5 to 8.5 x 47.24 in; Tray 2, optional 1x550-sheet feeders: 4 x 5.83 to 8.5 x 14.0 in
Media size, tray 1 (metric)	A4, A5, A6, RA4, B5, B6, 10 x 15 cm, Oficio 216 x 340, 16k, Postcard (JIS), DPostcard (JIS), Envelopes (DL, C5, B5, C6); custom 64 x 127 to 216 x 1200 mm			
Media weights supported, by paper path	Metric	Tray 1: 60 to 220 g/m ² (plain), 120 to 220 g/m ² (glossy); Tray 2: 60 to 220 g/m ² (plain), 120 to 220 g/m ² (glossy); Optional 550-sheet input trays: 60 to 220 g/m ² (plain), 120 to 220 g/m ² (glossy)	Imperial	Tray 1: 16 to 58 lb (plain), 32 to 58 lb (glossy); Tray 2: 16 to 58 lb (plain), 32 to 58 lb (glossy); Optional 550-sheet input trays: 16 to 58 lb (plain), 32 to 58 lb (glossy)
Media weights supported, tray 1 (metric)	60 to 220 g/m ² (plain), 120 to 220 g/m ² (glossy)			
Media size, ADF	Letter; Legal; Oficio; Executive; Statement; 16K; A4; RA4; A5; A6; B5; B6 (JIS); Postcard (JIS); DPostcard (JIS); 4 x 6 in; 5 x 7 in; 5 x 8 in			
Media weights supported, ADF	Metric	45 to 199 g/m ²	Imperial	12 to 53 lb
Key media sizes supported	Metric	A4	Imperial	Letter; Legal
Control panel	10.1-in touchscreen with color graphics			
System requirements, Macintosh, minimum	2 GB available hard drive space; Internet connection; or USB port; Internet browser; For additional OS hardware requirements, see apple.com			
System requirements, minimum	2 GB available hard disk space; Internet connection; or USB port; Internet browser; For additional OS hardware requirements, see microsoft.com			
Manufacturer warranty	One-year Next Business Day Onsite Warranty; Warranty and support options vary by product, country, and local legal requirements. Go to http://hp.com/support to learn about HP award-winning service and support options in your region.			
Weight	Metric	39.10 kg	Imperial	86.02 lb
Package weight	Metric	43.99 kg	Imperial	96.78 lb

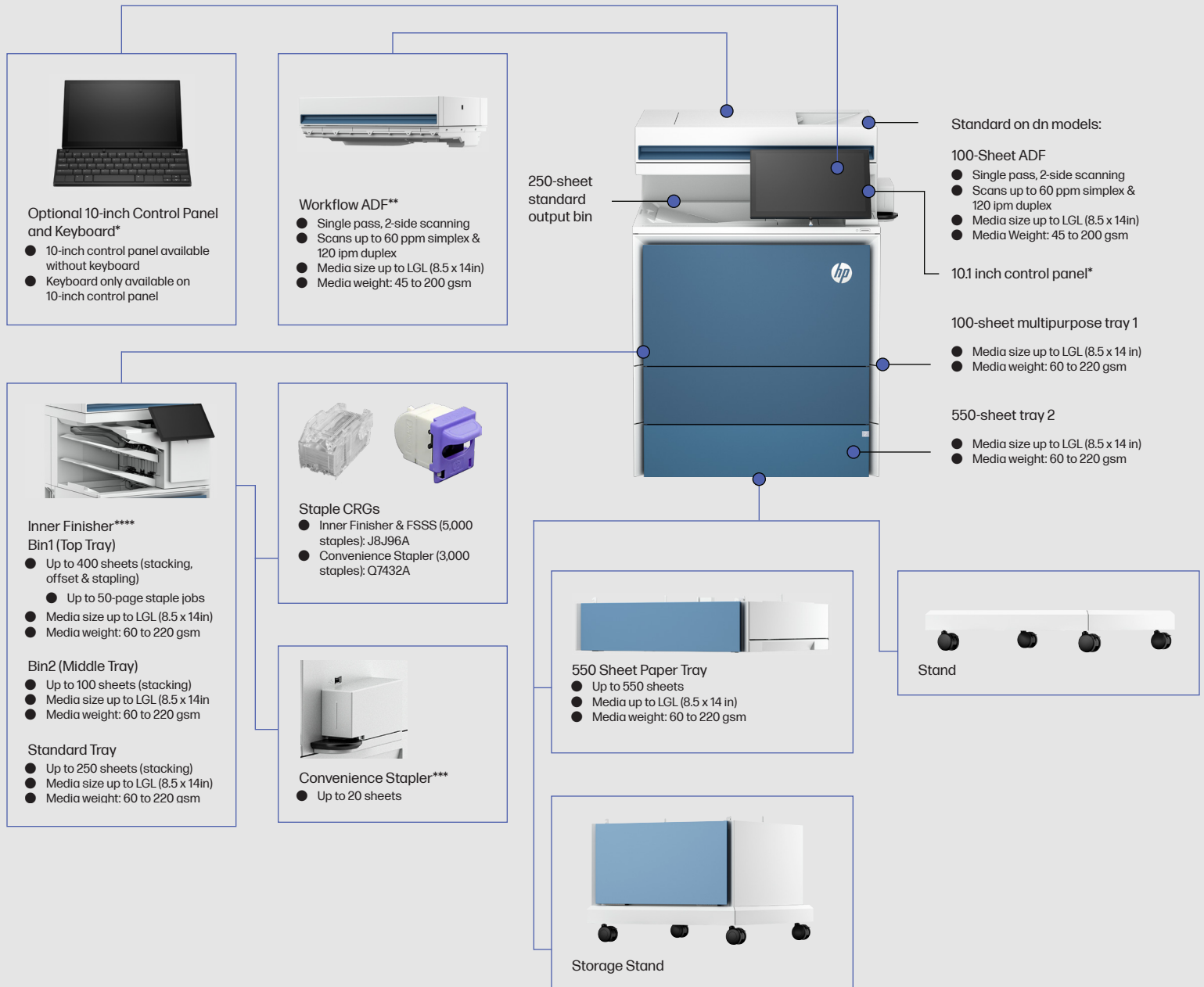
5800 accessories

Accessory Description	Accessory SKU #
HP Accessibility Kit	2TD64A
HP Internal USB Expansion Kit	4XN67A
HP Jetdirect LAN Accessory	8FP31A
HP Foreign Interface Harness	B5L31A
HP LaserJet Keyboard Overlay Kit for Simplified Chinese & Traditional Chinese*	A7W12A
HP LaserJet Keyboard Overlay Kit-Danish/French-Switzerland/German-Switzerland*	A7W13A
HP LaserJet Swedish Overlay Keyboard*	A7W14A
HP SmartCard NIPRNet Solution for US Government	CC543B
HP SmartCard SIPRNet Solution for US Government	F8B30A
HP Removable Hard Drive Enclosure	2NR12A
HP Printing Voice Assistant	478C2A
HP MFP Analog Fax 702 Accessory	1M0Q0A
HP MFP Analog Fax 703 Accessory (BBU option code only)	1M0Q1A
HP LaserJet Workflow Accelerator Card*	1M0Q5A
HP Color LaserJet Stand	9V9E5A (Available in Rest of World)
HP Color LaserJet Stand	6QN54A (Available in Chile, India and South Africa)
HP Color LaserJet Storage Stand	9V9E6A (Available in Rest of World)
HP Color LaserJet Storage Stand	6QN55A (Available in Chile, India and South Africa)
HP Color LaserJet 550 Sheet Paper Tray	6QN57A
HP LaserJet Workflow Keyboard*	1M0Q2A
HP LaserJet Workflow UK Keyboard*	616H2A
HP USB Universal Card Reader	X3D03A
HP HIP2 Keystroke Reader	Y7C05A
HP Legic Secure USB Reader	4QL32A
HP HID Mob Acc Mifare DES Fire KS Reader	35H11A
HP 500GB CCC FIPS Hard Disk Drive	AZ6G2A
HP Jetdirect 3100w BLE/NFC/Wireless	3JN69A
HP Color LaserJet Constellation Yellow 550 sheet Paper Tray	65A28A
HP Color LaserJet Cosmic Green 550 sheet Paper Tray	65A29A
HP Color LaserJet Aurora Purple 550 sheet Paper Tray	65A30A
HP Color LaserJet Comet Red 550 sheet Paper Tray	65A31A
HP Color LaserJet Lunar Gray 550 sheet Paper Tray	65A32A
HP Color LaserJet Constellation Yellow Storage Stand	65A38A
HP Color LaserJet Cosmic Green Storage Stand	65A39A

* only compatible with flow models

Configuration

HP Color LaserJet Enterprise Flow MFP 5800zf



* Only in zf bundle; the dn and f bundles come with 8 inch screen

**Only on ZF bundle

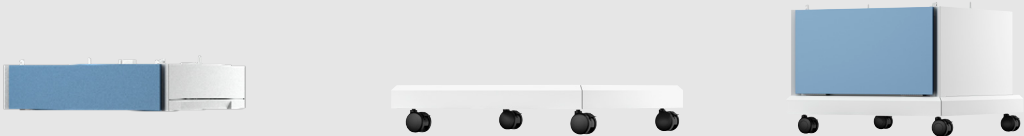
*** Only on F & ZF bundles

****Only available through CTO

Paper handling accessories

Stand and input devices

Paper input and stand options



Product number	6QN57A	6QN54A* / 9V9E5A**	6QN55A* / 9V9E6A**
Product description	HP Color LaserJet 550 sheet paper tray	HP Color LaserJet stand	HP Color LaserJet storage stand
Configurations	Available as optional accessory for 5800dn, f and zf bundles (3 trays max. If two-bin inner finisher is installed – only 2 trays max allowed)	Available as optional accessory for 5800dn, f and zf bundles	Available as optional accessory for 5800dn, f and zf bundles

*Available in Chile, India and South Africa
**Available in Rest of World



Images of printers and accessories may differ from actual products depending on country regulations. For more information on what accessories are included please visit [hp.com](https://www.hp.com).

© Copyright 2024 HP Development Company, L.P. The information contained herein is subject to change without notice. The only warranties for HP products and services are set forth in the express warranty statements accompanying such products and services. Nothing herein should be construed as constituting an additional warranty. HP shall not be liable for technical or editorial errors or omissions contained herein.

The only warranties for HP products and services are set forth in the express warranty statements accompanying such products and services. Nothing herein should be construed as constituting an additional warranty. HP shall not be liable for technical or editorial errors or omissions contained herein. No HP trademark notice is required, nor is any acknowledgement of another party's trademarks unless we are contractually obligated to do so, e.g., Microsoft or Intel MDF program commitments. See the Trademarks website for the list of such marks.

4AA8-3130ENW