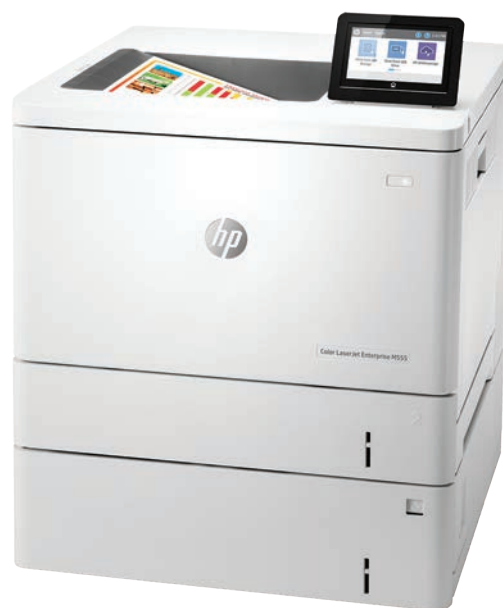




## Future-proof performance for whatever business brings

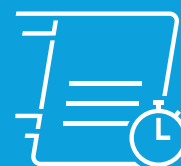
HP Color LaserJet Enterprise M554 and M555 series  
HP Color LaserJet Enterprise MFP M578 series



The world's  
most secure printing<sup>1</sup>



Easy to use,  
simple to manage



Enhanced productivity  
to empower workgroups

# The world's most secure printing<sup>1</sup>



HP printers have the industry's strongest security because they're always on guard, continually detecting and stopping threats while adapting to new ones.<sup>1</sup> And only HP printers automatically self-heal from attacks, so IT doesn't need to intervene.



## Always on guard

Only HP Enterprise printers offer built-in security features that are always on guard.<sup>1</sup>

- With HP Sure Start, each device regularly checks its operating code and repairs itself from attempted hacks.
- Whitelisting checks firmware during startup to help ensure that it's authentic, good code—digitally signed by HP.
- Run-time intrusion detection continually monitors activity to detect and stop attacks, then automatically reboots.
- HP Connection Inspector inspects outgoing network connections to stop suspicious requests like malware.

Thwart potential attacks by receiving instant notification of security issues, so immediate action can be taken. This device works with tools like Splunk, ArcSight, McAfee, and SIEMonster.

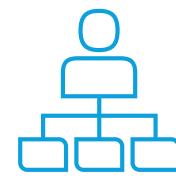


## Opt for tighter security

Help protect the device with more than 200 embedded security features.<sup>2</sup> Protect information in transit over the network and stored on the device—keys, passwords, certificates, and more. Store data on the 256-bit encrypted HP High-Performance Secure Hard Disk.

Further safeguard data stored on the device using the HP Trusted Platform Module.<sup>3</sup>

Help ensure the security of confidential information with the optional proximity card reader.<sup>4</sup> Enter a PIN/password at the device to retrieve your print jobs.



## Your whole fleet, at your control

Centralise control of your printing environment with HP Web Jetadmin—and help build business efficiency.<sup>5</sup> Optional HP JetAdvantage Security Manager offers an effective, policy-based approach to help secure HP printing and imaging devices.<sup>6</sup> Easily set security configuration policies and automatically validate settings for every HP printer and MFP in your fleet.

HP JetAdvantage Secure Print and HP Access Control (HPAC) help secure documents by requiring authentication to release print jobs.<sup>7</sup> In addition, extend capabilities and easily customise with HPAC—integrate job accounting, manage rights, and establish quotas for things such as colour use.<sup>8</sup> Save IT time and make printing easy for the entire enterprise by using a single driver for all HP devices.<sup>9</sup>

### ► For more information

#### Fleet management

HP Web Jetadmin: [hp.com/go/wja](http://hp.com/go/wja)

Solution brief: <http://h20195.www2.hp.com/V2/GetPDF.aspx/4AA5-2718ENW.pdf>

Video: <http://hp.brightcovegallery.com/solutions/detail/video/4271055504001/>

HP Universal Print Driver: [hp.com/go/upd](http://hp.com/go/upd)

Solution brief: <http://h20195.www2.hp.com/V2/GetPDF.aspx/4AA2-4781ENW.pdf>

#### Security

HP JetAdvantage Security Solutions: [hp.com/go/printsecurity](http://hp.com/go/printsecurity)

Solution overview: <http://h20195.www2.hp.com/V2/GetPDF.aspx/4AA3-1295ENW.pdf>

Video: <http://hp.brightcovegallery.com/products/detail/video/4270905124001/>

HP JetAdvantage Security Manager: [hp.com/go/securitymanager](http://hp.com/go/securitymanager)

Brochure: <http://h20195.www2.hp.com/V2/GetPDF.aspx/4AA3-9275ENW.pdf>

Video: <http://hp.brightcovegallery.com/products/detail/video/427083770001/>

# Enhanced productivity keeps business moving

Easy-to-use features, fast print speeds, and simple mobile printing options help you keep up with the speed of business.

## Take waiting out of your workday

Don't wait for documents. Receive your first page in as few as 6.7 seconds from ready mode<sup>10</sup> and 9.0 seconds from energy-efficient sleep mode<sup>11</sup> on M554/M555 models (A4 speed). Print up to 38 pages per minute (ppm) on M555 and MFP M578 models (A4).<sup>12</sup>



Accelerate workflows with single-pass, two-sided scanning up to 64/58 images per minute (ipm), on MFP M578 models (A4, black/colour).<sup>13</sup>

Scan files directly to Microsoft Office 365 and SharePoint®, plus email, USB, and network folders.<sup>14</sup>



## Investment protection

Work with the future in mind. HP FutureSmart firmware can be updated with the latest features to optimise your investment in print infrastructure for years to come.<sup>15</sup>

Get consistent, intuitive user controls across devices, seamlessly incorporate paper and digital content to improve workflows, and install updates on your schedule.

## Loaded for productivity

Let high-volume jobs handle themselves. The M555 and MFP M578 models have a substantial 2,300-sheet maximum capacity with optional input trays, so you can spend less time loading and reloading paper.<sup>16</sup> For details, see paper-handling accessories on page 10.



Make everyday work more efficient. Equip employees to breeze through tasks using the 20.3 cm (8.0-inch) colour touchscreen and convenience stapler on the MFP M578 series, or the 10.9 cm (4.3-inch) colour touchscreen on the M555 models.

Easily develop, deploy, and integrate HP and third-party solutions with the HP Open Extensibility Platform. Add features such as card readers<sup>4</sup> and more through the Hardware Integration Pocket.<sup>17</sup>

# Sustainability is smart business



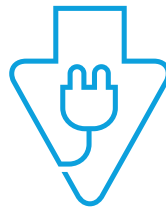
Business is all about resource management, and finding efficiencies is everyone's responsibility. HP LaserJet printers and MFPs are designed with the environment in mind, so workgroups can complete tasks quickly while helping to conserve energy wherever possible.



## Designed to conserve

Help reduce wasted paper with automatic two-sided printing and a default duplex setting.<sup>18</sup>

Help cut costs with HP Auto-On/Auto-Off Technology<sup>19</sup> and HP Instant-On Technology<sup>20</sup>—intelligence that readies your printer right when you need it and turns it off when you don't.



## Enhanced energy efficiency

Save energy without sacrificing performance—all HP Color LaserJet Enterprise M554, M555, and MFP M578 models are ENERGY STAR® certified.



## Reduce your environmental impact

Avoid frustrating reprints, wasted supplies, and service calls when you use Original HP Toner cartridges that are engineered for optimal results with your HP printer or MFP.

Recycle your Original HP cartridges easily and at no additional charge with HP Planet Partners.<sup>21</sup>



# Powerful printing. Energy smart.<sup>22</sup>



Count on Original HP Toner cartridges with JetIntelligence to deliver high-quality colour pages at fast speeds, plus high-yield options<sup>23</sup> and innovative anti-fraud technology to enable the consistent HP quality you need. Designed with the environment,<sup>24</sup> indoor air quality,<sup>25</sup> and cartridge chip security in mind.<sup>26</sup>



## Get high-quality printing

Count on the advantages of Original HP Toner cartridges—performance, high quality, and dependability. Original HP Toner cartridges with JetIntelligence deliver high-quality colour pages, help reduce costs with high-yield options and page maximiser technology, and intelligently track toner levels with print gauge technology, so you can be confident you're getting value from every cartridge you buy.



## Get more from your printer

Original HP Toner cartridges with JetIntelligence are specially engineered to match your printer's high-speed performance without sacrificing the quality you depend on to look professional. Produce top-quality documents at speeds your printer was built to achieve with HP ColorSphere 3 toner.



## Get peace of mind with anti-fraud protection

Original HP Toner cartridges help protect against counterfeits. Anti-fraud technology authenticates that a genuine Original HP cartridge is installed and allows customers to enable fleet-wide printing policies that support Original HP-only cartridges. HP design, production, and supply chain processes help keep your printing system secure,<sup>27</sup> and tamper-resistant chips help ensure customers get the Original HP quality they paid for.<sup>26</sup>

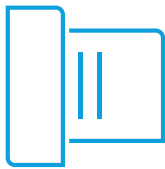


HP 212X High-Yield Original LaserJet Toner Cartridges  
(~13,000 black or 10,000 colour pages)<sup>28</sup>

# Give workgroups the speed they need



Accelerate workflow, improve accuracy, and connect people throughout your organisation with the HP Color LaserJet Enterprise Flow MFP M578c. Complete two-sided scan jobs quickly—up to 64/58 ppm (A4, black/colour)<sup>13</sup>—and avoid extra steps with a device designed for maximum productivity.



## Easily scan and edit text

Capture text from documents with high accuracy. Easily scan documents, edit text, and save as a Microsoft Word or searchable PDF file with built-in OCR software.<sup>29</sup>

Walk up and print from or scan to a memory device using the easy-access USB port.<sup>30</sup>



## Fast scanning and input

Turn stacks of paper documents into digital files. Load up to 100 sheets into the automatic document feeder (ADF) for fast, unattended scanning—up to 13,900 scanned pages per month.<sup>31</sup>

Enter data more quickly and accurately with a pull-out keyboard. Typing information for jobs right at the device is familiar and fast.









## Every page, every time

Capture every page easily—with confidence. HP EveryPage gives employees smooth paper-handling capabilities to detect potential errors or missed pages on the spot—for scan jobs of all kinds.

Auto-orientation, auto-crop, and auto-tone functions help ensure every scanned document is properly oriented, cropped to size, and greyscale-optimised—so you get the documents you're looking for the first time.

### Flow MFP features<sup>29</sup>

 HP EveryPage	 64 ipm <sup>13</sup> Fast scan speeds <sup>13</sup>	 Auto-orient, auto-crop, auto-tone
 Pull-out keyboard	 Built-in OCR	 13,900 pages <sup>31</sup> Extended-life ADF <sup>31</sup>

# Stay connected with secure mobile printing



Improve work team agility while also protecting the company network. Ethernet and optional wireless networking help users stay connected and work securely—throughout the office.<sup>32</sup> Add wireless direct and NFC touch-to-print to print directly from your mobile device.<sup>33,34</sup>



## Print from a variety of mobile devices

Print documents, email, PDFs, and more from smartphones and tablets running iOS, Android™, Windows, and Google Chrome™ operating systems—generally no setup or apps required.<sup>35</sup>

Add the option to print with just a touch of your NFC-enabled smartphone or tablet to the print device.<sup>34</sup>



## Print from virtually anywhere

Meet the needs of your mobile workforce—without making more work for yourself. HP Roam for Business helps avoid complex infrastructure and ongoing maintenance.<sup>36</sup>

Mobile users can submit print jobs to the cloud from any device while on the go, then retrieve them from any HP Roam for Business-enabled device simply and securely. There's no need to worry about device-to-printer compatibility or connectivity.



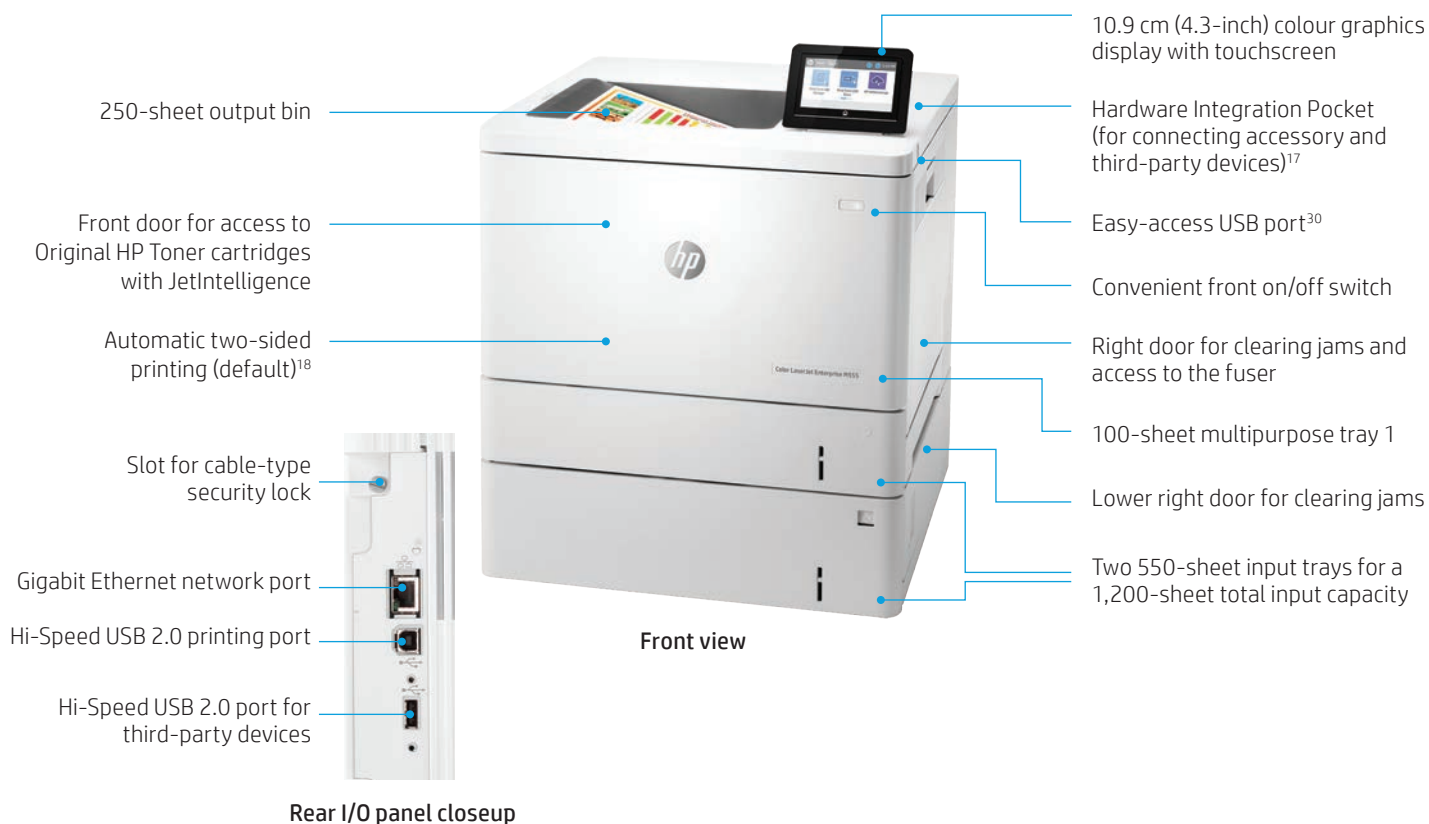
## Extend your printing reach

Keep your office connected. Access, print, and share printing resources with dual-band Wi-Fi® and Bluetooth® Low Energy—available with an optional accessory.<sup>37</sup>

Optional 128-bit encrypted wireless direct printing helps secure data in transit and at rest—without accessing the company network—when using smartphones, tablets, and notebook PCs.<sup>33</sup>

# Get to know the HP Color LaserJet Enterprise M554/M555 series

## HP Color LaserJet Enterprise M555x shown



## Series at a glance



Model	M554dn	M555dn	M555x
Product number	7ZU81A	7ZU78A	7ZU79A
Print speed (A4/letter) <sup>12</sup>	Up to 33/35 ppm	Up to 38/40 ppm	Up to 38/40 ppm
Automatic two-sided printing (default) <sup>18</sup>	✓	✓	✓
100-sheet multipurpose tray 1, and 550-sheet input tray 2	✓	✓	✓
550-sheet input tray 3	Optional (up to 1)	Optional (up to 3)	✓ (plus up to 2)
Input capacity (standard/maximum) <sup>16</sup>	Up to 650/1,200 sheets	Up to 650/2,300 sheets	Up to 1,200/2,300 sheets
Printer stand	Not available	Optional	Optional
Control panel	6.86 cm colour display	10.9 cm colour touchscreen	10.9 cm colour touchscreen
Memory (standard/maximum)	1 GB/1 GB	1 GB/2 GB	1 GB/2 GB
HP High-Performance Secure Hard Disk	Not available	Optional	Optional
Hardware Integration Pocket (HIP) <sup>17</sup>	✓	✓	✓
Dual-band Wi-Fi with Bluetooth® Low Energy, Wi-Fi Direct <sup>37</sup>	Optional	Optional	✓
ENERGY STAR® qualified	✓	✓	✓



# Get to know the HP Color LaserJet Enterprise M578 series

HP Color LaserJet Enterprise Flow MFP M578c shown



## Series at a glance



Model	M578dn	M578c
Product number	7ZU85A	7ZU87A
Print speed (A4/letter) <sup>12</sup>	Up to 38/40 ppm	Up to 38/40 ppm
Automatic two-sided printing (default) <sup>18</sup>	✓	✓
100-sheet multipurpose tray 1 and 550-sheet input tray 2	✓	✓
550-sheet input trays 3, 4, and 5	Optional	Optional
100-sheet ADF	✓	✓ (plus HP EveryPage)
Convenience stapler	Not available	✓
Advanced workflow features	Not available	✓
Input capacity (standard/maximum) <sup>16</sup>	Up to 650/2300 sheets	Up to 650/2300 sheets
Printer stand	Optional	Optional
Control panel	20.3 cm colour touchscreen	20.3 cm colour touchscreen and integrated keyboard
Fax	Optional	✓
HP High-Performance Secure Hard Disk	✓	✓
Dual-band Wi-Fi with Bluetooth® Low Energy, Wi-Fi Direct <sup>37</sup>	Optional	Optional
ENERGY STAR® qualified	✓	✓

# HP Color LaserJet Enterprise M554/M555/M578 series— configuration

## Choose your accessories



**550-Sheet Media Tray  
(B5L34A)**

- Add up to one (M554dn), two (M555x), or three (M555dn, M578 series)
- Media size up to 216 x 356 mm (8.5 x 14 inches)
- Media weight from 60 to 163 g/m<sup>2</sup> (16 to 59 lb)



**Printer Stand  
(B5L51A)**

- Select one (M555 and M578 series only)



Standard on M554dn model:

- 100-sheet multipurpose tray 1
  - Media size up to 216 x 356 mm (8.5 x 14 inches)
  - Media weight from 60 to 163 g/m<sup>2</sup> (16 to 59 lb)
- 550-sheet tray 2
  - Media size up to 216 x 356 mm (8.5 x 14 inches)
  - Media weight from 60 to 163 g/m<sup>2</sup> (16 to 59 lb)



Standard on M555 models:

- 100-sheet multipurpose tray 1
  - Media size up to 216 x 356 mm (8.5 x 14 inches)
  - Media weight from 60 to 163 g/m<sup>2</sup> (16 to 59 lb)
- 550-sheet tray 2
  - Media size up to 216 x 356 mm (8.5 x 14 inches)
  - Media weight from 60 to 163 g/m<sup>2</sup> (16 to 59 lb)
- 550-sheet tray 3 (M555x only)
  - Media size up to 216 x 356 mm (8.5 x 14 inches)
  - Media weight from 60 to 163 g/m<sup>2</sup> (16 to 59 lb)



Standard on M578 models:

- 100-sheet multipurpose tray 1
  - Media size up to 216 x 356 mm (8.5 x 14 inches)
  - Media weight from 60 to 163 g/m<sup>2</sup> (16 to 59 lb)
- 550-sheet tray 2
  - Media size up to 216 x 356 mm (8.5 x 14 inches)
  - Media weight from 60 to 163 g/m<sup>2</sup> (16 to 59 lb)

# HP Color LaserJet Enterprise M554/M555 technical specifications

	HP Color LaserJet Enterprise M554dn	HP Color LaserJet Enterprise M555dn	HP Color LaserJet Enterprise M555x
<b>Product number</b>	7ZU81A	7ZU78A	7ZU79A
<b>Control panel</b>	6.86 cm (2.7-inch) QVGA LCD (colour graphics) display with 24-key pad	10.9 cm (4.3-inch) touchscreen with colour graphics	
<b>Print speed<sup>12</sup></b>	Up to 33/35 ppm (A4/letter)	Up to 38/40 ppm (A4/letter)	
<b>First page out<sup>10,11</sup></b>	From ready (A4/letter): as fast as 6.7/6.6 seconds, black, and 7.6/7.5 seconds, colour From sleep (A4/letter): as fast as 9.0/8.5 seconds, black, and 9.0/9.0 seconds, colour		
<b>Print resolution</b>	Up to 600 x 600 dpi (normal), up to 1200 x 1200 dpi (fine lines), HP ImageREt 3600 (best), <sup>38</sup> PANTONE calibrated		
<b>Printer advanced features</b>	Apple AirPrint™, Mopria-certified, HP ePrint, Open Extensibility Platform, FutureSmart Firmware, Instant-On Technology, HP Auto-On/Auto-Off Technology, Easy Access USB, two-sided printing, Hardware Integration Pocket, print multiple pages per sheet (2, 4, 6, 9, 16), collation, watermarks, store print jobs		HP Roam for Business optional
	HP Roam for Business optional		HP Roam for Business capable, Wi-Fi Direct Printing, Bluetooth® Low-Energy
<b>Processor</b>	1.2 GHz		
<b>Memory</b>	1 GB	1 GB (expandable to 2 GB through 1 GB 90-pin DDR3 DIMM)	
<b>Storage</b>	Standard: 4 GB non-volatile storage; firmware encryption (AES 128 or AES 256) of customer/job data; Secure Cryptographic Erase – Job Data; Secure Erase – Disk		
	4 GB eMMC	Optional 500 GB hard drive	
<b>Durability ratings</b>	Duty cycle: <sup>39</sup> Up to 80,000 pages (A4/letter)		
	Recommended monthly page volume (RMPV): <sup>40</sup> 2,000 pages to 8,500 pages	RMPV: 2,000 pages to 10,000 pages	
<b>Media specifications</b>			
<b>Input capacity</b>	Up to 650 sheets standard, up to 1,200 sheets maximum (with 1 optional 550-sheet tray) Tray 1: up to 100 sheets Tray 2: up to 550 sheets	Up to 650 sheets standard, up to 2,300 sheets maximum (with 3 optional 550-sheet trays) Tray 1: up to 100 sheets Tray 2: up to 550 sheets	Up to 1,200 sheets standard, up to 2,300 sheets maximum (with 2 optional 550-sheet trays) Tray 1: up to 100 sheets Trays 2, 3: up to 550 sheets each
<b>Output capacity</b>	Up to 250 sheets	Up to 250 sheets	Up to 250 sheets
<b>Two-sided printing</b>	Automatic	Automatic	Automatic
<b>Media sizes</b>	<ul style="list-style-type: none"> <li>Tray 1: A4, RA4, A5, B5 (JIS), B6 (JIS), 10 x 15 cm, A6, 16K, Envelopes (B5, C5 ISO, C6, DL ISO); Letter, Legal, Oficio, Executive, Statement, 4 x 6, 3 x 5, 5 x 7, 5 x 8, Postcard (JIS), Double Postcard (JIS), 8.5 x 13, Envelope (Commercial No. 9, No. 10, Monarch); custom: 76 x 127 to 216 x 356 mm (3 x 5 to 8.5 x 14 in)</li> <li>Tray 2: A4, A5, B5 (JIS), B6 (JIS), 10 x 15 cm, A6, 16K; Letter, Executive, Statement, 4 x 6, 5 x 7, 5 x 8, Double Postcard (JIS); custom: 102 x 148 to 216 x 297 mm (4.0 x 5.85 to 8.5 x 11.69 in)</li> <li>Optional trays 3+: A4, RA4, A5, B5 (JIS), 16K; Letter, Legal, Oficio, Executive, 8.5 x 13; custom: 102 x 148 to 216 x 356 mm (4.0 x 5.85 to 8.5 x 14 in)</li> </ul>		
<b>Media weights</b>	<ul style="list-style-type: none"> <li>Trays 1, 2, and 3+: 60 to 220 g/m<sup>2</sup> (16 to 58 lb) for plain paper; 105 to 220 g/m<sup>2</sup> (28 to 58 lb) for glossy paper</li> <li>Automatic Duplexer: 60 to 163 g/m<sup>2</sup> (16 to 43 lb)</li> </ul>		
<b>Media types</b>	Paper (plain, light, bond, recycled, mid-weight, heavy, mid-weight glossy, heavy glossy, extra heavy, extra heavy glossy, cardstock, card glossy) colour transparency, labels, letterhead, envelope, preprinted, prepunched, coloured, rough, opaque film, user-defined		
<b>Print languages</b>	HP PCL 6; HP PCL 5c; HP postscript level 3 emulation, native PDF printing (v 1.7)		
<b>Fonts</b>	105 internal TrueType fonts scalable in HP PCL, 92 internal scalable fonts in HP Postscript level 3 emulation (Euro symbol built-in); 1 internal Unicode Font (Andale Mono WorldType); 2 Internal Windows Vista 8 Fonts (Calibri, Cambria); additional font solutions available via third-party flash memory cards; HP LaserJet Fonts and IPDS Emulation available at <a href="http://hp.com/go/laserjetfonts">hp.com/go/laserjetfonts</a>		
<b>Connectivity</b>	1 Hi-Speed Device USB 2.0; 2 Hi-Speed USB 2.0 Host; 1 Gigabit/Fast Ethernet 10/100/1000 Base-TX network; Hardware Integration Pocket		1 Wireless 802.11b/g/n, 2.4 GHz / 5 GHz Wi-Fi radio
<b>Mobile printing</b>	HP ePrint; <sup>41</sup> Apple AirPrint™; <sup>42</sup> Mopria™ Certified; <sup>43</sup> HP Roam for Business optional for easy printing <sup>44</sup>	HP ePrint; Apple AirPrint™; Mopria™ Certified; HP Roam for Business optional for easy printing; NFC touch-to-print (optional)	HP ePrint; Apple AirPrint™; Mopria™ Certified; HP Roam for Business capable for easy printing; Wi-Fi® Direct printing; NFC touch-to-print (optional)
<b>Network capabilities</b>	Yes, via HP Jetdirect Ethernet embedded print server (standard), which supports: 10Base-T, 100Base-Tx, 1000Base-T; 802.3az (EEE) support on Fast Ethernet and Gigabit Ethernet; IPsec (standard)		
	802.11b/g/n / 2.4 GHz / 5 GHz Wi-Fi radio wireless networking (optional)	802.11a/b/g/n wireless networking (optional)	802.11b/g/n / 2.4 GHz / 5 GHz Wi-Fi radio wireless networking (standard)

# HP Color LaserJet Enterprise M554/M555 technical specifications

	HP Color LaserJet Enterprise M554dn	HP Color LaserJet Enterprise M555dn	HP Color LaserJet Enterprise M555x
<b>Network protocols</b>	TCP/IP, IPv4, IPv6; Print: TCP-IP port 9100 Direct Mode, LPD (raw queue support only), Web Services Printing, IPP 2.0, Apple AirPrint™, HP ePrint, FTP Print, Google Cloud Print; DISCOVERY: SLP, Bonjour, Web Services Discovery; IP CONFIG: IPv4 (BootP, DHCP, AutoIP, Manual, TFTP Config, ARP-Ping), IPv6 (Stateless Link-Local and via Router, Statefull via DHCPv6); Management: SNMPv2/v3, HTTP/HTTPS, Telnet, TFTP Config, FTP FW Download, Syslog; Security: SNMPv3, SSL Cert Management, Firewall, ACL, 802.1x		
<b>Security management</b>	<p>Identity management: Kerberos authentication; LDAP authentication; 1000 user PIN codes; optional HP and third-party advanced authentication solutions (e.g.; badge readers)</p> <p>Network: IPsec/firewall with certificate; pre-shared key; and Kerberos authentication; supports WJA-10 IPsec configuration plug-in; 802.1X authentication (EAP-PEAP; EAP-TLS); SNMPv3; HTTPS; certificates; access control list</p> <p>Data: Storage encryption; encrypted PDF and email (uses FIPS 140 validated cryptographic libraries from Microsoft); secure erase; SSL/TLS (HTTPS); encrypted credentials</p> <p>Device: Security lock slot; USB port disablement; Hardware Integration Pocket for security solutions; Intrusion Detection with Red Balloon Security Technology (constant in-device monitoring for attacks); HP Sure Start Secure Boot (BIOS Integrity Checking with self-healing capability); Whitelisting (loads only known good code DLLs, EXEs, etc.); embedded Trusted Platform Module (TPM); HP Connection Inspector</p> <p>Security management: Compatible with HP JetAdvantage Security Manager, Device Security Syslog Messages processed and accessible in Arcsight and Splunk SIEMs</p>		
<b>Printer management</b>	HP Printer Assistant, HP Device Toolbox, HP Web Jetadmin software, HP JetAdvantage Security Manager, HP SNMP Proxy Agent, HP WS Pro Proxy Agent, Printer Administrator Resource Kit for HP Universal Print Driver (Driver Configuration Utility – Driver Deployment Utility – Managed Printing Administrator)		
<b>Compatible operating systems</b>	<p>Windows Client OS (32/64 bit): Windows 10, Windows 8.1, Windows 7 Ultimate</p> <p>Mobile OS: iOS, Android</p> <p>Mac: Apple® macOS High Sierra v10.13, Apple® macOS Mojave v10.14, Apple® macOS Catalina v10.15</p> <p>For more information on the supported operating systems, see <a href="http://hp.com/go/upd">hp.com/go/upd</a></p>		
<b>System requirements, PC</b>	2 GB available hard disk space, Internet connection or USB port, Internet browser. For additional OS hardware requirements, see <a href="http://microsoft.com">microsoft.com</a>		
<b>System requirements, Mac</b>	2 GB available hard drive space, Internet connection or USB port, Internet browser. For additional OS hardware requirements, see <a href="http://apple.com">apple.com</a>		
<b>Dimensions (width x depth x height)</b>	<p>Minimum (all trays closed): 458 x 479 x 400 mm (18 x 18.9 x 15.7 in)</p> <p>Maximum: 820 x 785 x 400 mm (32.3 x 30.9 x 15.7 in)</p>	<p>Minimum (all trays closed): 458 x 479 x 380 mm (18 x 18.9 x 15 in)</p> <p>Maximum: 820 x 785 x 455 mm (32.3 x 30.9 x 17.9 in)</p>	<p>Minimum (all trays closed): 458 x 479 x 513 mm (18 x 18.9 x 20.2 in)</p> <p>Maximum: 820 x 785 x 588 mm (32.3 x 30.9 x 23.1 in)</p>
<b>Weight (with cartridges)</b>	27.5 kg (60.6 lb)	27.5 kg (60.6 lb)	33.4 kg (73.6 lb)
<b>What's in the box</b>	Printer; four preinstalled HP LaserJet toner cartridges (yield ~5,500 pages black, ~3,500 pages cyan, magenta, yellow composite); <sup>28</sup> toner collection unit; in-box documentation; power cord		Plus: 550-sheet input tray 3
<b>Software included</b>	No software solutions are included in the box, only on <a href="http://hp.com">hp.com</a> and <a href="http://123.hp.com">123.hp.com</a>		
<b>Downloadable software</b>	<p>From <a href="http://123.hp.com">123.hp.com</a>: HP Easy Start (Guided Software Install for Windows and Mac)</p> <p>From <a href="http://hp.com">hp.com</a> (Windows): Full-solution software and drivers, basic-solution software and drivers, HP PCL6 XPS Discrete Print Driver, Product Documentation and Support</p> <p>From <a href="http://hp.com">hp.com</a> (Mac OS): HP Easy Start (Guided Software Install), HP Mac OS Print Driver, HP Easy Admin</p> <p>For Mobile OS: See <a href="http://hp.com/go/businessmobileprinting">hp.com/go/businessmobileprinting</a></p> <p>From <a href="http://hp.com">hp.com</a> (for printer administrators): Printer Administrator Resource Kit (Driver Configuration Utility – Driver Deployment Utility – Managed Printing Administrator), HP Universal Print Drivers PCL6 GDI &amp; PS GDI for Windows, HP ePrint Software (Mobile Driver for Windows), SAP Print Drivers, HP Web Jetadmin, HP JetAdvantage Security Manager, HP Roam for Business, HPLIP Linux Printer Driver, Unix Model Script Printer Driver</p>		
<b>Warranty</b>	One-year, next-business-day, onsite warranty. Warranty and support options vary by product, country, and local legal requirements. Go to <a href="http://hp.com/support">hp.com/support</a> to learn about HP award-winning service and support options in your region.		

# HP Color LaserJet Enterprise M554/M555 environmental specifications

	HP Color LaserJet Enterprise M554dn	HP Color LaserJet Enterprise M555dn	HP Color LaserJet Enterprise M555x
<b>Environmental ranges</b>			
Temperatures	Operating: 10 to 32°C (50 to 91°F); Recommended: 15 to 27°C (59 to 80.6°F)		
Relative humidity (RH) range	Operating: 10 to 80% RH; Recommended: 30 to 70% RH		
<b>Acoustic power emissions<sup>45</sup></b>	Ready mode: 4.8 B(A) Active printing: 6.4 B(A)	Ready mode: 4.7 B(A) Active printing: 6.3 B(A)	
<b>Acoustic pressure emissions (bystander)</b>	Ready mode: 33 dB(A) Active printing: 51 dB(A)	Ready mode: 34 dB(A) Active printing: 51 dB(A)	
<b>Power specifications<sup>46</sup></b>	Blue Angel; EPEAT® Silver; <sup>47</sup> CECP; ENERGY STAR® certified		
Power supply required	Input voltage: 100 to 127 VAC, 60 Hz, Input voltage: 200 to 240 VAC, 50 Hz (Not dual voltage, product varies by part number with # Option code identifier)		
Power consumption <sup>48</sup>	589 watts (printing), 28.5 watts (ready), 2.17 watts (sleep), 0.07 watts (auto-off/manual on), 0.48 watts (auto-off/auto-on/wake on LAN)	622 watts (printing), 31.3 watts (ready), 2.4 watts (sleep), 0.06 watts (auto-off/manual on), 0.69 watts (auto-off/auto-on/wake on LAN)	
Typical Electricity Consumption (TEC) <sup>49</sup>	0.395 kWh/Week (ENERGY STAR 3.0)  1.203 kWh/Week (Blue Angel)	0.464 kWh/Week (ENERGY STAR 3.0)  1.368 kWh/Week (Blue Angel)	
Energy-saving features	HP Auto-On/Auto-Off Technology, <sup>19</sup> Instant-On Technology <sup>20</sup>		
<b>Environmental specifications</b>	Mercury free		
<b>Safety approvals and requirements</b>	IEC 60950-1:2005 +A1:2009 +A2:2013 (International); EN60950-1:2006 +A11:2009 +A1:2010 +A12:2011 +A2:2013 (EU); EN 60825-1:2014/IEC 60825-1:2014 (Class 1 Laser Product); EN 62479:2010/IEC 62479:2010; Low Voltage Directive 2014/35/EU with CE Mark (Europe); GS Certificate (Germany, Europe); UL/cUL Listed and UC CoC (US/Canada); CAN/CSA C22.2 No. 60950-1-07 2nd Ed. 2011-12; compliance with Laser safety standards 21 CFR 1040.10 and 1040.11 except for deviations pursuant to Laser notice No. 50, dated June 24, 2007; other safety approvals as required by individual countries.		
<b>Electromagnetic emission standard</b>	CISPR 22:2008 (International) Class A, CISPR 32:2012 (International)/ EN 55032:2012, CISPR 35:2016 (International)/ EN 55035:2017, EN 55024:2010 +A1:2015, EN 61000-3-2:2014, EN 61000-3-3:2013, FCC CFR 47 Part 15 Class A, ICES-003, Issue 6 Class A. Other EMC approvals as required by individual countries.		

# HP Color LaserJet Enterprise M578 technical specifications

	HP Color LaserJet Enterprise MFP M578dn	HP Color LaserJet Enterprise Flow MFP M578c
<b>Product number</b>	7ZU85A	7ZU87A
<b>Control panel</b>	20.3 cm (8.0-inch) colour touchscreen; adjustable angle display with gesturing; illuminated Home button (for quick return to the Home menu)	
		Plus integrated keyboard
<b>Print speed<sup>12</sup></b>	Up to 38/40 ppm (A4/letter)	
<b>First page out<sup>10,11</sup></b>	From ready (A4/letter): as fast as 7.0/6.9 seconds, black, and 7.9/7.8 seconds, colour From sleep (A4/letter): as fast as 10.7/10.3 seconds, black, and 11.7/11.3 seconds, colour	
<b>Print resolution</b>	Up to 600 x 600 dpi (normal), up to 1200 x 1200 dpi (fine lines), HP ImageREt 3600 (best), <sup>38</sup> PANTONE calibrated	
<b>Scan resolution</b>	Up to 600 x 600 dpi	
<b>ADF scan speed<sup>13</sup></b>		
Single-sided (A4/letter)	Up to 43/45 ppm, black, and up to 38/40 ppm, colour	Up to 45/48 ppm, black and colour
Two-sided (A4/letter)	Up to 43/45 ipm, black, and up to 38/40 ipm, colour	Up to 64/68 ipm, black, and up to 58/60 ipm, colour
<b>Features</b>		
Printing	Apple AirPrint™, Mopria™ Certified, HP ePrint, Open Extensibility Platform, FutureSmart Firmware, Instant-On Technology, HP Auto-On/Auto-Off technology, Easy Access USB, two-sided printing, Hardware Integration Pocket, intuitive 20.3 cm touchscreen control panel, print multiple pages per sheet (2, 4, 6, 9, 16), collation, watermarks, store print jobs, print preview	
	HP Roam for Business optional for easy printing	HP Roam for Business optional for easy printing, advanced workflow features with integrated pull-out keyboard
Scanning	Flatbed scanner, up to 216 x 356 mm (8.5 x 14 inches); 100-sheet ADF with two-sided, single-pass scanning Advanced features: optimise text/picture; image adjustments; job build; output quality setting; selectable scan resolution 75 to 600 dpi; auto detect colour; edge erase; job notification; blank page suppression; HP Quick Sets	
	Plus: HP EveryPage; auto orientation; embedded optical character recognition (OCR), auto crop to page; auto-tone	
Digital sending	Standard: scan to email; save-to-network folder; save-to-USB drive; send to FTP; send to Internet fax; local address book; SMTP over SSL; blank page removal; edge erase; auto colour sense; auto crop to content; compact PDF; send to SharePoint	
		Plus: send to LAN fax; auto tonescale; auto orientation; multi-pick detect; auto straighten; auto crop to page; OCR
	Optional via HP Digital Sending Software (HP DSS); send-to-folder; send-to-workflow; send-to-printer; authentication; digital fax (send to LAN, Internet); OCR; local address book	
Copying	Auto scale; reduce/enlarge from scanner glass (25 to 400 percent); collate; auto colour detection; two-sided copying; image adjustments (darkness, background cleanup, sharpness); job build; copy resolution: up to 600 x 600 dpi	
Faxing <sup>50</sup>		Fax speed: 33.6 kbps Fax resolution: up to 204 x 98 dpi (standard); up to 204 x 196 dpi (fine); up to 300 x 300 dpi (superfine); up to 400 x 400 dpi (received faxes only) Advanced features: stored faxes; fax archiving; fax forwarding; scale to fit; fax address book; LAN/Internet fax; fax number confirmation; holiday fax schedule
<b>Processor</b>	1.2 GHz	
<b>Memory</b>	1.25 GB, upgradable to 3.75 GB (printer), 512 MB (scanner)	
<b>Storage</b>	Standard, embedded HP High-Performance Secure Hard Disk, minimum 500 GB; AES 256 hardware encryption or greater; secure erase capabilities (Secure File Erase–Temporary Job Files, Secure Erase–Job Data, Secure ATA Erase–Disk); U.S. Government: Standard, FIPS 140-2 validated hard disk, minimum 500 GB	
<b>Durability ratings</b>		
RMPV <sup>40</sup>	2,000 to 10,000 pages recommended monthly page volume (RMPV)	
RMSV <sup>31</sup>	4,150 to 6,900 pages recommended monthly scan volume (RMSV)	8,350 to 13,900 pages RMSV
Duty cycle <sup>39</sup>	Up to 80,000 pages	

# HP Color LaserJet Enterprise M578 technical specifications

	HP Color LaserJet Enterprise MFP M578dn	HP Color LaserJet Enterprise Flow MFP M578c
<b>Media specifications</b>		
Input capacity	Up to 650 sheets standard, up to 2,300 sheets maximum	
Output capacity	Up to 250 sheets	
Two-sided printing	Automatic	
Media sizes	<p>Tray 1: A4, RA4, A5, B5 (JIS), B6 (JIS), 10 x 15 cm, A6, 16K, Envelopes (B5, C5 ISO, C6, DL ISO); Letter, Legal, Oficio, Executive, Statement, 4 x 6, 3 x 5, 5 x 7, 5 x 8, Postcard (JIS), Double Postcard (JIS), 8.5 x 13, Envelope (Commercial No. 9, No. 10, Monarch); custom: 76 x 127 to 216 x 356 mm (3 x 5 to 8.5 x 14 in)</p> <p>Tray 2: A4, A5, B5 (JIS), B6 (JIS), 10 x 15 cm, A6, 16K; Letter, Executive, Statement, 4 x 6, 5 x 7, 5 x 8, Double Postcard (JIS); custom: 102 x 148 to 216 x 297 mm (4.0 x 5.85 to 8.5 x 11.69 in)</p> <p>Optional trays 3+: A4, RA4, A5, B5 (JIS), 16K; Letter, Legal, Oficio, Executive, 8.5 x 13; custom: 102 x 148 to 216 x 356 mm (4.0 x 5.85 to 8.5 x 14 in)</p>	
Media weights	Trays 1, 2, and 3+: <sup>51</sup> 60 to 220 g/m <sup>2</sup> (16 to 58 lb) for plain paper; 105 to 220 g/m <sup>2</sup> (28 to 58 lb) for glossy paper Automatic Duplexer: 60 to 163 g/m <sup>2</sup> (16 to 43 lb)	
Media types	Paper (plain, light, bond, recycled, mid-weight, heavy, mid-weight glossy, heavy glossy, extra heavy, extra heavy glossy, cardstock, card glossy), colour transparency, labels, letterhead, envelope, preprinted, prepunched, coloured, rough, opaque film, user-defined	
<b>Print languages</b>	XPS, HP PCL 6; HP PCL 5c; HP postscript level 3 emulation, native PDF printing (v 1.7)	
<b>Fonts</b>	105 internal TrueType fonts scalable in HP PCL, 92 internal scalable fonts in HP postscript Level 3 emulation (Euro symbol built-in); 1 internal Unicode Font (Andale Mono World Type); 2 Internal Windows Vista 8 Fonts (Calibri, Cambria); additional font solutions available via third-party flash memory cards; HP LaserJet Fonts and IPDS Emulation available at <a href="http://hp.com/go/laserjetfonts">hp.com/go/laserjetfonts</a>	
<b>Connectivity</b>	1 Hi-Speed Device USB 2.0; 2 Hi-Speed USB 2.0 Host; 1 Gigabit/Fast Ethernet 10/100/1000 Base-TX network; Hardware Integration Pocket	
<b>Mobile printing</b>	HP ePrint; <sup>41</sup> Apple AirPrint <sup>™</sup> ; <sup>42</sup> Mopria <sup>™</sup> Certified; <sup>43</sup> NFC Touch-to-Print (optional); HP Roam for Business (optional) <sup>44</sup>	
<b>Network capabilities</b>	Yes, via HP Jetdirect Ethernet embedded print server (standard), which supports: 10Base-T, 100Base-Tx, 1000Base-T; 802.3az (EEE) support on Fast Ethernet and Gigabit Ethernet; IPsec (standard)  802.11b/g/n / 2.4 GHz / 5 GHz Wi-Fi radio wireless networking (optional)	
<b>Network protocols</b>	TCP/IP, IPv4, IPv6; Print: TCP-IP port 9100 Direct Mode, LPD (raw queue support only), Web Services Printing, IPP 2.0, Apple AirPrint <sup>™</sup> , HP ePrint, FTP Print, Google Cloud Print; DISCOVERY: SLP, Bonjour, Web Services Discovery; IP CONFIG: IPv4 (BootP, DHCP, AutoIP, Manual, TFTP Config, ARP-Ping), IPv6 (Stateless Link-Local and via Router, Statefull via DHCPv6); Management: SNMPv2/v3, HTTP/HTTPS, Telnet, TFTP Config, FTP FW Download, Syslog; Security: SNMPv3, SSL Cert Management, Firewall, ACL, 802.1x	
<b>Security management</b>	<p>Identity management: Kerberos authentication; LDAP authentication; 1000 user PIN codes; optional HP and third-party advanced authentication solutions (e.g., badge readers)</p> <p>Network: IPsec/firewall with certificate; pre-shared key; and Kerberos authentication; supports WJA-10 IPsec configuration plug-in; 802.1X authentication (EAP-PEAP; EAP-TLS); SNMPv3; HTTPS; certificates; access control list</p> <p>Data: Storage Encryption; encrypted PDF and email (uses FIPS 140 validated cryptographic libraries from Microsoft); secure erase; SSL/TLS (HTTPS); encrypted credentials</p> <p>Device: Security lock slot; USB port disablement; Hardware Integration Pocket for security solutions; Intrusion Detection with Red Balloon Security Technology (constant in-device monitoring for attacks); HP Sure Start Secure Boot (BIOS Integrity Checking with self-healing capability); Whitelisting (loads only known good code DLLs, EXEs, etc.); embedded Trusted Platform Module (TPM); HP Connection Inspector</p> <p>Security management: Compatible with HP JetAdvantage Security Manager, Device Security Syslog Messages processed and accessible in Arcsight and Splunk SIEMs</p>	
<b>Printer management</b>	HP Printer Assistant, HP Device Toolbox, HP Web Jetadmin software, HP JetAdvantage Security Manager, HP SNMP Proxy Agent, HP WS Pro Proxy Agent, Printer Administrator Resource Kit for HP Universal Print Driver (Driver Configuration Utility – Driver Deployment Utility – Managed Printing Administrator)	

# HP Color LaserJet Enterprise M578 technical specifications

	HP Color LaserJet Enterprise MFP M578dn	HP Color LaserJet Enterprise Flow MFP M578c
<b>Compatible network operating systems</b>	Windows Server 2008 R2 64-bit, Windows Server 2008 R2 64-bit (SP1), Windows Server 2012 64-bit, Windows Server 2012 R2 64-bit, Windows Server 2016 64-bit, Windows Server 2019 64-bit, Citrix Server 6.5, Citrix XenApp & XenDesktop 7.6, Novell iPrint server, Citrix Ready Kit Certification up to Citrix Server 7.18, Linux, Unix, UPD PCL6 / PS Printer Drivers For more information on the supported operating systems, go to <a href="http://support.hp.com">support.hp.com</a> .	
<b>System requirements, PC</b>	2 GB available hard disk space, Internet connection or USB port, Internet browser. For additional OS hardware requirements, see <a href="http://microsoft.com">microsoft.com</a> .	
<b>System requirements, Mac</b>	2 GB available hard drive space, Internet connection or USB port, Internet browser. For additional OS hardware requirements, see <a href="http://apple.com">apple.com</a> .	
<b>Dimensions (width x depth x height)</b>	Minimum (all trays closed): 482 x 504 x 583 mm (18.98 x 19.84 x 22.95 inches) Maximum: 820 x 863 x 837 mm (32.3 x 34 x 33 inches)	
<b>Weight (with cartridges)</b>	38.1 kg (84 lb.)	38.6 kg (85 lb.)
<b>What's in the box</b>	Printer; four preinstalled HP LaserJet toner cartridges (yield ~5,500 pages black, ~3,500 pages cyan, magenta, yellow composite); <sup>28</sup> toner collection unit; in-box documentation; power cord; 100-sheet multipurpose tray 1; 550-sheet input tray 2	
		Plus fax cable
<b>Software included</b>	No software solutions are included in the box, only on <a href="http://hp.com">hp.com</a> and <a href="http://123.hp.com">123.hp.com</a>	
<b>Downloadable software</b>	<p>From <a href="http://123.hp.com">123.hp.com</a>: HP Easy Start (Guided Software Install for Windows and Mac)</p> <p>From <a href="http://hp.com">hp.com</a> (Windows): Full-solution software and drivers, basic-solution software and drivers, HP PCL6 XPS Discrete Print Driver, Product Documentation and Support</p> <p>From <a href="http://hp.com">hp.com</a> (Mac OS): HP Easy Start (Guided Software Install), HP Mac OS Print Driver, HP Easy Admin</p> <p>For Mobile OS: See <a href="http://hp.com/go/businessmobileprinting">hp.com/go/businessmobileprinting</a></p> <p>From <a href="http://hp.com">hp.com</a> (for printer administrators): Printer Administrator Resource Kit (Driver Configuration Utility – Driver Deployment Utility – Managed Printing Administrator), HP Universal Print Drivers PCL6 GDI &amp; PS GDI for Windows, HP ePrint Software (Mobile Driver for Windows), SAP Print Drivers, HP Web Jetadmin, HP JetAdvantage Security Manager, HP Roam for Business, HPLIP Linux Printer Driver, Unix Model Script Printer Driver</p>	
<b>Warranty</b>	One-year, next-business-day, onsite warranty. Warranty and support options vary by product, country, and local legal requirements. Go to <a href="http://hp.com/support">hp.com/support</a> to learn about HP award-winning service and support options in your region.	



# HP Color LaserJet Enterprise M578 environmental specifications

	HP Color LaserJet Enterprise MFP M578dn	HP Color LaserJet Enterprise Flow MFP M578c
<b>Environmental ranges</b>		
Temperatures	Operating: 10 to 32°C (50 to 91°F); Recommended: 15 to 27°C (59 to 80.6°F)	
Relative humidity (RH) range	Operating: 10 to 80% RH; Recommended: 30 to 70% RH	
<b>Acoustic power emissions<sup>45</sup></b>	Ready mode: 4.7 B(A); active printing (at 38 ppm): 6.5 B(A); active scanning (at 44 ppm): 6.4 B(A)	
<b>Acoustic pressure emissions (bystander)</b>	Ready mode: 32 dB(A); active printing (at 38 ppm): 51 dB(A); active scanning (at 44 ppm): 52 dB(A)	
<b>Power specifications<sup>46</sup></b>		
Power supply required	Blue Angel; EPEAT® Silver; <sup>47</sup> CECP; ENERGY STAR® certified	
Power consumption <sup>48</sup>	617 watts (printing), 40 watts (ready), 5.4 watts (sleep), 0.07 watts (auto-off/manual on), 0.58 watts (auto-off/auto-on/wake on LAN)	
Typical Electricity Consumption (TEC) <sup>49</sup>	0.501 kWh/week (ENERGY STAR 3.0), 1.555 kWh/week (Blue Angel)	
Energy-saving features	HP Auto-On/Auto-Off Technology, <sup>19</sup> Instant-On Technology, <sup>20</sup> Instant-On Copy	
<b>Environmental specifications</b>		
	Mercury free	
<b>Safety approvals and requirements</b>		
	IEC 60950-1:2005 +A1:2009 +A2:2013 (International); EN60950-1:2006 +A11:2009 +A1:2010 +A12:2011 +A2:2013 (EU); EN 60825-1:2014/IEC 60825-1:2014 (Class 1 Laser Product); EN 62479:2010/IEC 62479:2010; Low Voltage Directive 2014/35/EU with CE Mark (Europe); GS Certificate (Germany, Europe); IEC 62471:2006 / EN 62471:2008; UL/cUL Listed and UC CoC (US/Canada); CAN/CSA C22.2 No. 60950-1-07 2nd Ed. 2011-12; compliance with Laser safety standards 21 CFR 1040.10 and 1040.11 except for deviations pursuant to Laser notice No. 50, dated June 24, 2007; other safety approvals as required by individual countries.	
<b>Electromagnetic emission standard</b>		
	CISPR 22:2008 (International) Class A, CISPR 32:2012 (International)/ EN 55032:2012, CISPR 35:2016 (International)/ EN 55035:2017, EN 55024:2010 +A1:2015, EN 61000-3-2:2014, EN 61000-3-3:2013, FCC CFR 47 Part 15 Class A, ICES-003, Issue 6 Class A. Other EMC approvals as required by individual countries.	
<b>Telecom compliance certifications</b>		Telecom wired: ENERGY STAR 203 021-1 v2.1.1; ENERGY STAR 203 021-2 v2.1.2; ENERGY STAR 203 021-3 v2.1.2; FCC Rules and Regulations 47 CFR Part 68. Other Telecom approvals as required by individual countries.

# Ordering information

<b>Product</b>	HP Color LaserJet Enterprise M554dn	7ZU81A	
	HP Color LaserJet Enterprise M555dn	7ZU78A	
	HP Color LaserJet Enterprise M555x	7ZU79A	
	HP Color LaserJet Enterprise MFP M578dn	7ZU85A	
	HP Color LaserJet Enterprise Flow MFP M578c	7ZU87A	
<b>Supplies</b>	HP 212A Black Original LaserJet Toner Cartridge (~5,500 pages) <sup>52</sup>	W2120A	
	HP 212A Cyan Original LaserJet Toner Cartridge (~4,500 pages) <sup>52</sup>	W2121A	
	HP 212A Magenta Original LaserJet Toner Cartridge (~4,500 pages) <sup>52</sup>	W2123A	
	HP 212A Yellow Original LaserJet Toner Cartridge (~4,500 pages) <sup>52</sup>	W2122A	
	HP 212X High Yield Black Original LaserJet Toner Cartridge (~13,000 pages) <sup>52</sup>	W2120X	
	HP 212X High Yield Cyan Original LaserJet Toner Cartridge (~10,000 pages) <sup>52</sup>	W2121X	
	HP 212X High Yield Magenta Original LaserJet Toner Cartridge (~10,000 pages) <sup>52</sup>	W2123X	
	HP 212X High Yield Yellow Original LaserJet Toner Cartridge (~10,000 pages) <sup>52</sup>	W2122X	
	HP LaserJet 110v Fuser Kit (~150,000 pages)	B5L35A	
	HP LaserJet 220v Fuser Kit (~150,000 pages)	B5L36A	
	HP Color LaserJet Toner Collection Unit (~54,000 pages)	B5L37A	
	HP 200 ADF Roller Replacement Kit (~75,000 pages)	W5U23A	
	HP Staple Cartridge Pack (2 cartridges, 1,500 staples each) <sup>53</sup>	Q7432A	
<b>Accessories</b>	HP Color LaserJet 550-Sheet Media Tray	B5L34A	
	HP HIP2 Keystroke Reader	Y7C05A	
	HP Internal USB Ports	B5L28A	
	HP JetDirect 3100w BLE/NFC/Wireless Accessory	3JN69A	
	HP Jetdirect LAN Accessory	8FP31A	
	HP Legic Reader	4QL32A	
	HP Universal Card Reader	X3D03A	
	<b>M555 and M578 series only:</b>		
	HP Accessibility Assistant	2MU47A	
	HP Color LaserJet Printer Stand	B5L51A	
	HP High-Performance Secure Disk Drive	B5L29A	
	<b>M555 series only:</b>		
	HP 1GB 90-Pin DDR3 DIMM	G6W84A	
	HP 1GB 90-Pin DDR3 TAA Version DIMM	2NR03A	
	<b>M578 series only:</b>		
	HP Accessibility Kit	2TD64A	
	HP 1GB DDR3x32 144-Pin 800MHz SODIMM Accessory	E5K48A	
	HP 2GB 144-Pin DDR3 TAA Version DIMM	2NR09A	
	HP 2GB DDR3x32 144-Pin 800MHz SODIMM Accessory	E5K49A	
	HP Foreign Interface Harness	B5L31A	
	HP LaserJet Keyboard Overlay Kit for Simplified Chinese & Traditional Chinese	A7W12A	
	HP LaserJet MFP Analog Fax 600 Accessory	B5L53A	
HP LaserJet Swedish Overlay Keyboard	A7W14A		
<b>Solutions</b>	HP Web Jetadmin: <a href="http://hp.com/go/wja">hp.com/go/wja</a>		
	HP Universal Print Driver: <a href="http://hp.com/go/upd">hp.com/go/upd</a>		
	HP JetAdvantage Security Manager: <a href="http://hp.com/go/securitymanager">hp.com/go/securitymanager</a>		
	HP LaserJet fonts, barcodes, and IPDS Emulation available at <a href="http://hp.com/go/laserjetfonts">hp.com/go/laserjetfonts</a>		
	To learn more about available infrastructure, management, and workflow solutions, visit <a href="http://hp.com/go/printingsolutions">hp.com/go/printingsolutions</a>		

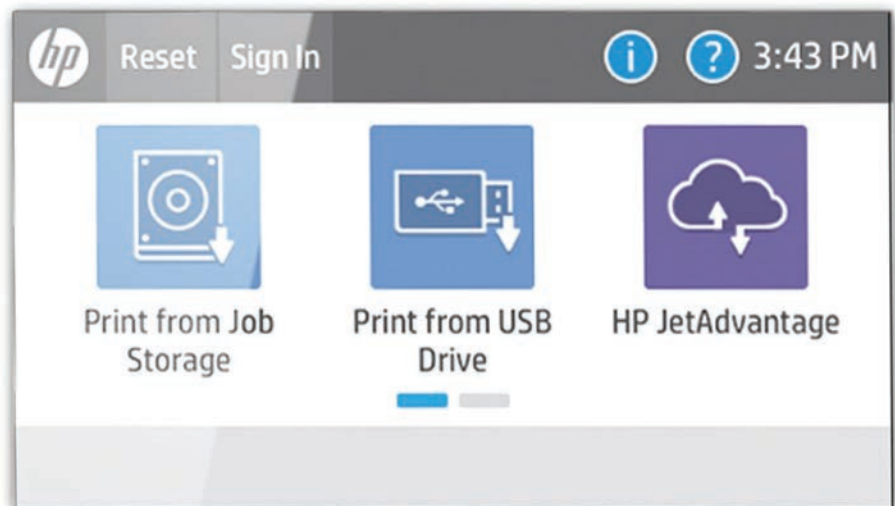
# Appendix A: Control panel features



To access additional apps on the new printer user interface, simply swipe right to left

## Upgrade to a modern interface

The HP Color LaserJet Enterprise M554, M555, and MFP M578 series are powered by HP FutureSmart firmware. Modern, tablet-like colour touchscreens on the M555 and M578 keep things simple and intuitive across your fleet of Enterprise devices. A scalable control panel interface improves future extensibility and allows for customisation, along with a robust set of apps and usability features. You can even customise with your own wallpaper image and company logo. The new Message Center, with more detailed information and helpful animations, makes it easy to address device events. The simplified home screen displays just a few core apps by default. Additional apps are easily accessed by swiping right to left, like with a smartphone or tablet.

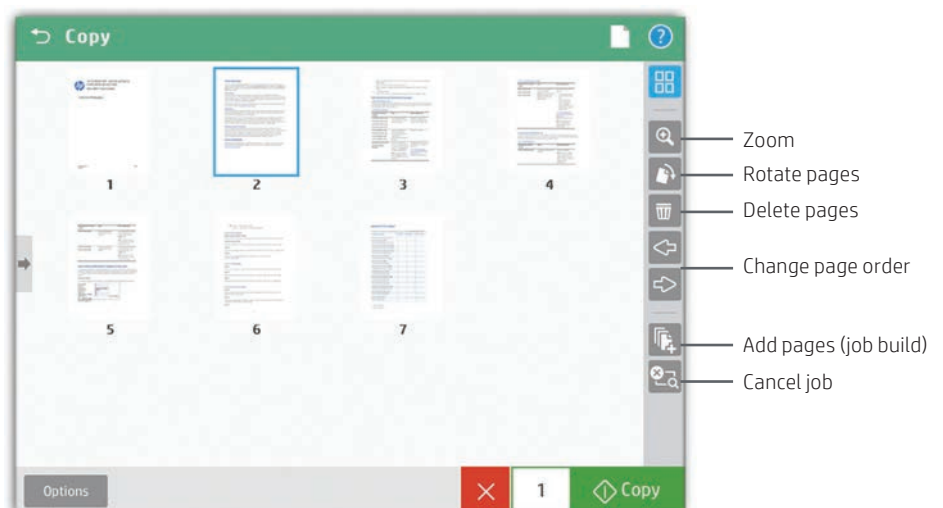


## Edit jobs right at the MFP

The control panel on the MFP M578 series features an enhanced image preview—now for both copies and scans. You can preview and edit scans before sending them, right from the MFP's 20.3 cm (8.0-inch) colour touchscreen. You can apply changes (like rotating) to a single page, or to multiple pages at once. Batch separation allows users to create separate PDF or PDF/A files from scanned pages. Flow models can also create PDF OCR and PDF/A OCR files.



The new MFP user interface enables swipe, rotate, and drag-and-drop capabilities



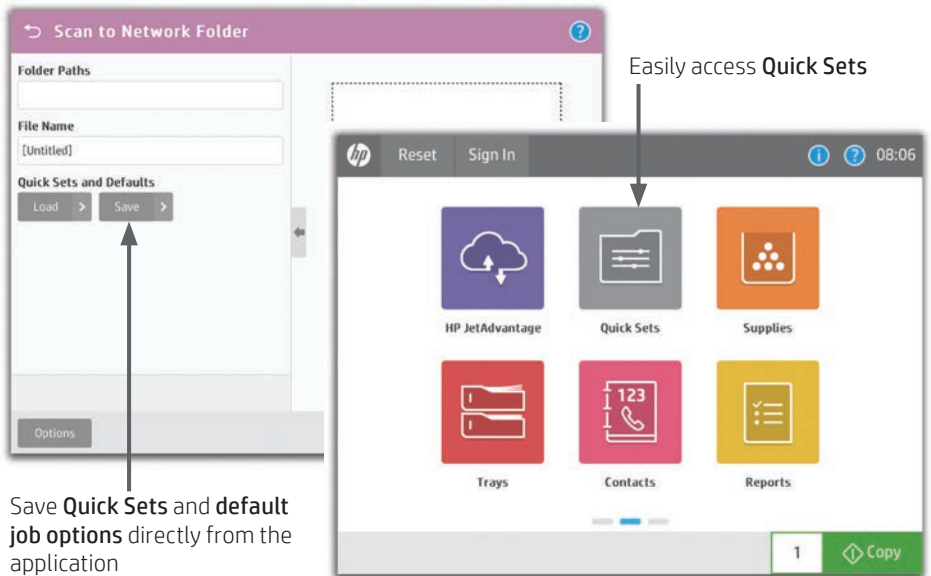
You can start a **preview** prior to committing to the copy job

## Use Quick Sets to launch automated workflows

The digital sending capability on the Flow MFP M578c allows users to route documents to a variety of destinations like email recipients, network folders, fax, FTP, a USB device, or Microsoft SharePoint.

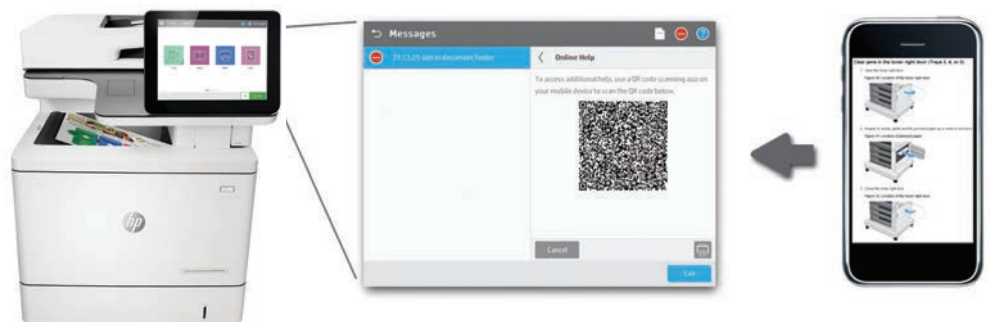
Quick Sets automate all of the steps of a complicated workflow and provide easy access to the configurations you use most, such as page size, resolution, and file format. You can also specify security settings, such as encrypted PDFs to be delivered through encrypted and signed emails.

Help users find what they need by moving individual Quick Sets to any screen or folder using the home screen customisation feature. With Quick Sets, IT can promote or block access to certain device features. Calls to the helpdesk can be reduced when users have everything they need and are restricted from accessing settings they shouldn't tamper with.



## Troubleshoot with ease

The HP Color LaserJet Enterprise M554, M555, and MFP M578 series can help save your IT department valuable time when it comes to troubleshooting problems. The Remote Control Panel allows users to operate the user interface remotely, so IT can troubleshoot problems without running to the printer or MFP.<sup>54</sup> Users can also quickly troubleshoot technical issues with HP's innovative, cloud-based Online Help services that are relevant and up to date. Easily solve problems from your PC or mobile device. A Quick Response (QR) code on the touchscreen links to Online Help using smart phones and tablets.<sup>55</sup>



1. HP's most advanced embedded security features are available on HP Enterprise and HP Managed devices with HP FutureSmart firmware 4.5 or above. Claim based on HP review of 2019 published features of competitive in-class printers. Only HP offers a combination of security features to automatically detect, stop, and recover from attacks with a self-healing reboot, in alignment with NIST SP 800-193 guidelines for device cyber resiliency. For a list of compatible products, visit [hp.com/go/PrintersThatProtect](http://hp.com/go/PrintersThatProtect). For more information, visit [hp.com/go/PrinterSecurityClaims](http://hp.com/go/PrinterSecurityClaims).
2. Some features require additional purchase. A FutureSmart service pack update may be required to activate security features. Learn more at [hp.com/go/printsecurity](http://hp.com/go/printsecurity).
3. Use of the HP Trusted Platform Module may require a firmware upgrade.
4. HP Proximity Card Reader (CZ208a) is available for separate purchase for select HP devices with Hardware Integration Pocket (HIP) and touchscreen display.
5. HP Web Jetadmin is free and available for download at [hp.com/go/webjetadmin](http://hp.com/go/webjetadmin).
6. HP JetAdvantage Security Manager must be purchased separately. To learn more, please visit [hp.com/go/securitymanager](http://hp.com/go/securitymanager).
7. HP JetAdvantage Secure Print works with any network-connected printer or MFP. On-device authentication is available for many HP LaserJet, PageWide, and OfficeJet Pro devices and selected non-HP devices. Some devices may require a firmware upgrade. Internet connection required for cloud storage and retrieval of print jobs. Print-job release from a mobile device requires a network connection and QR code. For more information and a list of supported printers and MFPs, see [hp.com/go/JetAdvantageSecurePrint](http://hp.com/go/JetAdvantageSecurePrint).
8. Colour-access-control capabilities vary from device to device.
9. The HP Universal Print Driver is available for download at no additional charge at [hp.com/go/upd](http://hp.com/go/upd).
10. First page out measured using ISO/IEC 17629. For more information, see [hp.com/go/printerclaims](http://hp.com/go/printerclaims). Exact speed varies depending on the system configuration, software application, driver, and document complexity.
11. Measured after 15 minutes in sleep. Exact speed varies depending on the system configuration, software application, driver, document complexity, and time in sleep.
12. Print speed measured using ISO/IEC 24734, excludes first set of test documents. For more information, see [hp.com/go/printerclaims](http://hp.com/go/printerclaims). Exact speed varies depending on the system configuration, software application, driver, and document complexity.
13. Scan speeds measured from ADF. Actual processing speeds may vary depending on scan resolution, network conditions, computer performance, and application software.
14. Requires an Internet connection to the printer. Services may require registration. App availability varies by country, language, and agreements. For details, see [hpconnected.com](http://hpconnected.com).
15. Some features enabled by future HP FutureSmart firmware upgrades may not be available on older devices, if for example, physical product characteristics limit the functionality of the new feature.
16. Purchase of optional paper trays required to reach maximum input capacity.
17. Solutions deployed through the Hardware Integration Pocket (HIP) may require additional purchase.
18. Duplex printing by default is dependent upon country setup specifications.
19. HP Auto-On/Auto-Off Technology capabilities subject to printer and settings. May require a firmware upgrade.
20. HP LaserJet products with Instant-On Technology use an innovative, quick-heating fuser system that warms rapidly and cools quickly, helping you conserve energy compared with products that use traditional fusing.
21. HP Planet Partners programme availability varies. For more information, visit [hp.com/recycle](http://hp.com/recycle).
22. Based on the reduced energy use of HP LaserJet printers and cartridges with JetIntelligence introduced since 2015 compared to previous HP toner versions without JetIntelligence, using ENERGY STAR methodology.
23. HP 212X High Yield Original LaserJet Toner cartridges are not included in printer purchase; purchase separately. Comparison based on ISO 19798 cartridge yields for HP 212X High Yield Original LaserJet Toner Cartridges compared with HP 212A Original LaserJet Toner Cartridges. Learn more at [hp.com/go/toneryield](http://hp.com/go/toneryield).
24. 100% of Original HP toner cartridges contain between 5% and 45% post-consumer or post-industrial recycled content. Does not include toner bottles. See [hp.com/go/recycledcontent](http://hp.com/go/recycledcontent) for list.
25. An HP printing system consists of HP printer, HP paper, and Original HP supply. Blue Angel DE-UZ 205 emissions criteria or earlier versions applicable when printing system launched.
26. HP Office-class printing systems include Enterprise-class devices with FutureSmart firmware 4.5 or above, Pro-class devices, and their respective Original HP toner, PageWide, and ink cartridges. Does not include HP integrated printhead ink cartridges. See [h20195.www2.hp.com/v2/GetDocument.aspx?docname=4AA6-8438ENW](http://h20195.www2.hp.com/v2/GetDocument.aspx?docname=4AA6-8438ENW) and [hp.com/go/SuppliesSecurityClaims](http://hp.com/go/SuppliesSecurityClaims).
27. Digital supply-chain tracking, hardware, and packaging security features vary locally by SKU.
28. Average black and colour composite (C/M/Y) declared yields based on ISO/IEC 19798 and continuous printing. Actual yields vary considerably based on images printed and other factors. For details, see [hp.com/go/toneryield](http://hp.com/go/toneryield). HP Color LaserJet Enterprise M554, M555, and MFP / Flow MFP M578 in-box colour cartridges may have higher yield than stated for printer units manufactured before 2021.
29. Advanced workflow features are available on the Flow MFP M578c model only and include HP EveryPage, a pull-out keyboard, embedded capture functionality, and built-in OCR, plus automatic page orientation, cropping, and tone adjustment.
30. An administrator must enable the easy-access USB port before use.
31. HP recommends that the number of scanned pages per month be within the stated range for optimum device performance.
32. Wireless performance is dependent on physical environment and distance from access point and may be limited during active VPN connections.
33. Wireless direct printing can be added with purchase of the HP Jetdirect 3100w BLE/NFC/Wireless Accessory (3JN69A). For details, see [hp.com/go/businessmobileprinting](http://hp.com/go/businessmobileprinting).
34. NFC touch-to-print is optional and can be added with purchase of the HP Jetdirect 3100w BLE/NFC/Wireless Accessory (3JN69A). Mobile device must support Near Field Communication (NFC)-enabled printing. For more information, see [hp.com/go/businessmobileprinting](http://hp.com/go/businessmobileprinting).
35. Wireless operations are compatible with 2.4 GHz operations only. App or software and HP ePrint account registration may also be required. Some features require purchase of an optional accessory. Learn more at [hp.com/go/mobileprinting](http://hp.com/go/mobileprinting).
36. To enable HP Roam for Business, some devices may require firmware to be upgraded and an optional accessory to add Bluetooth Low Energy (BLE) beaconing capabilities. Subscription may be required. For more information, visit [hp.com/go/roam](http://hp.com/go/roam).
37. Dual-band Wi-Fi with Bluetooth Low Energy is optional with the addition of the HP Jetdirect 3100w BLE/NFC/Wireless Accessory (3JN69A). Wireless operations are compatible with 2.4 GHz and 5 GHz operations only. Learn more at [hp.com/go/mobileprinting](http://hp.com/go/mobileprinting).

38. 600 x 600 dpi x 8-bit default engine resolution with ImageREt 3600 Enhancement Technology.
39. Duty cycle is defined as the maximum number of pages per month of imaged output. This value provides a comparison of product robustness in relation to other HP LaserJet or HP Color LaserJet devices, and enables appropriate deployment of printers and MFPs to satisfy the demands of connected individuals or groups.
40. HP recommends that the number of pages per month of imaged output be within the stated range for optimum device performance, based on factors including supplies replacement intervals and device life over an extended warranty period.
41. Requires purchase of an optional accessory.
42. Supports the following devices running iOS 4.2 or later: iPad, iPad 2, iPhone (3GS or later), iPod touch (third generation or later). Works with HP's AirPrint-enabled printers and requires the printer be connected to the same network as your iOS device. Wireless performance is dependent on physical environment and distance from the access point.
43. Mopria-certified HP printer and mobile device must be connected to the same wireless network or have a direct wireless connection. Performance is dependent on physical environment and distance from the wireless access point. Wireless operations are compatible with 2.4 GHz routers only.
44. To enable HP Roam for Business, some devices may require firmware to be upgraded and an optional accessory to add Bluetooth Low Energy (BLE) beaconing capabilities. Customers can purchase the HP Jetdirect 3100w BLE/NFC/Wireless accessory or the RadBeacon USB. Subscription may be required. For more information, visit [hp.com/go/roam](http://hp.com/go/roam).
45. Acoustic values are subject to change. For current information, see [hp.com/support](http://hp.com/support). Configuration tested: base model, simplex printing, A4 paper at an average of 33 ppm (M554dn) or 38 ppm (M555/M578 series).
46. Power requirements are based on the country/region where the printer is sold. Do not convert operating voltages. This will damage the printer and void the product warranty.
47. EPEAT registered where applicable. EPEAT registration varies by country. See [epeat.net](http://epeat.net) for registration status by country.
48. Power requirements are based on the country/region where the printer is sold. Do not convert operating voltages. This will damage the printer and void the product warranty. ENERGY STAR Version 3.0 TEC is not comparable to ENERGY STAR Version 2.0 TEC values or BA TEC values. BA uses ENERGY STAR Version 2.0 TEC. ENERGY STAR value typically based on measurement of 115 V device.
49. Typical Electricity Consumption (TEC) rating represents the typical electricity consumed by a product during one week, measured in kilowatt-hours (kWh).
50. Fax capabilities are optional for the HP Color LaserJet Enterprise MFP M578dn, with purchase of the HP LaserJet MFP Analog Fax Accessory.
51. Standard and optional features vary by model.
52. Average black and color composite (C/M/Y) declared yields based on ISO/IEC 19798 and continuous printing. Actual yields vary considerably based on images printed and other factors. For details, see [hp.com/go/toneryield](http://hp.com/go/toneryield).
53. The HP Staple Cartridge Pack accessory is available for the HP Color LaserJet Enterprise MFP M578c model.
54. Availability dependent on firmware or software updates or upgrades.
55. Online Help must be enabled on the printer or MFP. Mobile device must have an Internet connection to access online services.

Sign up for updates  
[hp.com/go/getupdated](http://hp.com/go/getupdated)

---

© Copyright 2020 HP Development Company, L.P. The information contained herein is subject to change without notice. The only warranties for HP products and services are set forth in the express warranty statements accompanying such products and services. Nothing herein should be construed as constituting an additional warranty. HP shall not be liable for technical or editorial errors or omissions contained herein. Apple, AirPrint, Mac, and macOS are trademarks of Apple Inc., registered in the United States and other countries. Bluetooth is a trademark owned by its proprietor and used by HP under licence. ENERGY STAR is a registered mark owned by the U.S. Environmental Protection Agency. Google, Android, and Chrome are trademarks of Google Inc. Microsoft, Windows, and SharePoint are registered trademarks of Microsoft Corporation in the United States and/or other countries. Wi-Fi and Wi-Fi Direct are registered trademarks of Wi-Fi Alliance. All other trademarks are the property of their respective owners.

