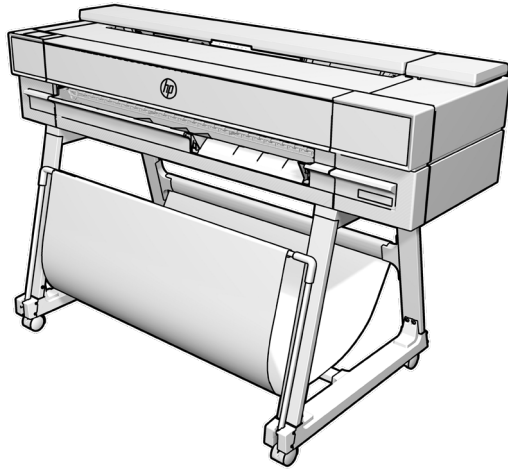


HP DesignJet T850 Printer Series

Assembly Instructions



3 people are required to perform certain tasks.



Time required for assembly of the printer is approximately 90 minutes.



Tools required: T25 screwdriver (included)

Edition 1

© Copyright 2023 HP Development Company, L.P.
Large Format Division
Cami de Can Groells 1-21
08174 - Sant Cugat del Valles
Barcelona - Spain

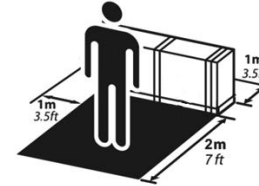
All rights reserved

Printed in XXX

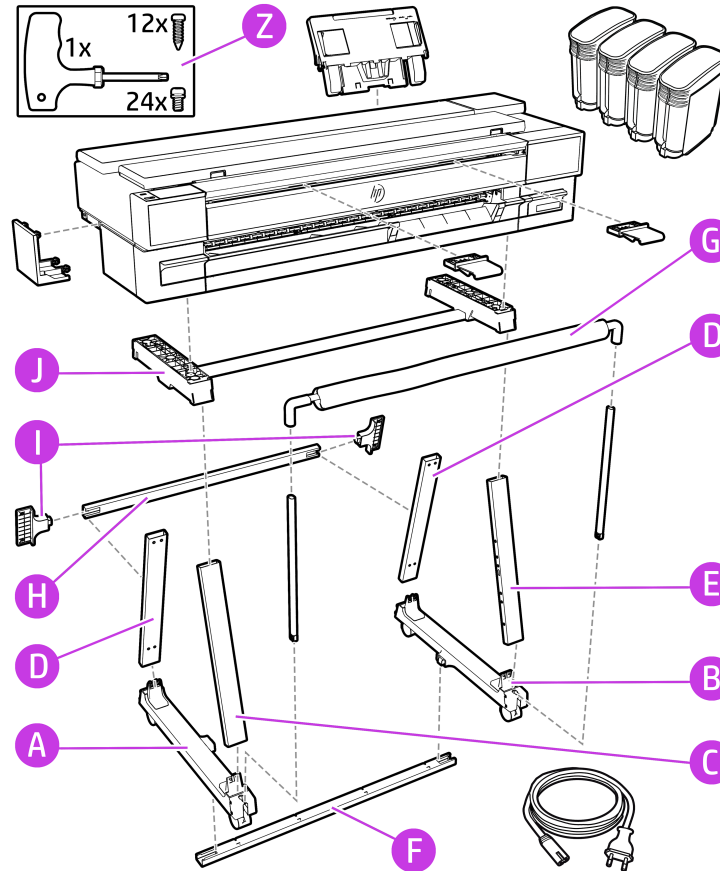
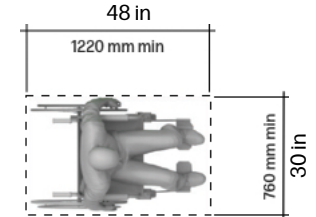


Please read these instructions carefully. These assembly instructions explain how to assemble the printer. Notice that the icons used in this document are also located on the printer packaging. The icons help you locate the parts needed at each stage of the assembly. Because spare screws are supplied, some screws may remain unused after assembly of the printer.

Product working area
Before you start unpacking, consider where you are going to put the assembled product. You should allow some clear space on all sides of the product box. The recommended clearances are shown in the illustration. To assemble the product you will need at least 3 x 3 m (118 x 118 in) of empty floor space.



To ensure an accessible operating area for printer use, it is recommended to leave a minimum clear space of 760 mm (30 inches) by 1220 mm (48 inches) with an even level around the sides of the printer. Light reflection (glare) could affect the readability of the control panel, to improve the visibility, select the most suitable theme (dark-light) in the Control Panel.



Crate Contents

Documentation:

- Assembly Instructions Flyer
- Printer
- Tray

Stand Pieces:

- Left bottom cross-connector (A)
- Right bottom cross-connector (B)
- Left front-leg (C)
- Left rear-leg (D)
- Right rear-leg (D)
- Right front-leg (E)
- Bottom cross-tube (F)
- Basket fabric and tube (G)
- Rear cross-tube (H)
- Brackets (I)
- Top cross-beam (J)

Miscellaneous:

- Screwdriver and screws (Z)
- Ink Cartridges
- Cable Cover
- Refeed preventers ×2 (only T850 MFP)
- Power cord

Be sure to follow the software installation instructions.

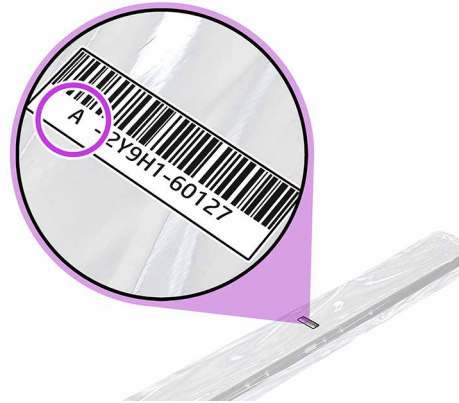
Note: LAN cable not included.

Important: Printhead is preinstalled.

Note: Some bags of parts in the box have a label that shows a letter and part number. Please don't remove the bag of each part before you reach to the corresponding assemble step.

Remove the packaging

1



Note: Some bags of parts in the box have a label that shows a letter and part number. Please don't remove the bag of each part before you reach to the corresponding assemble step.

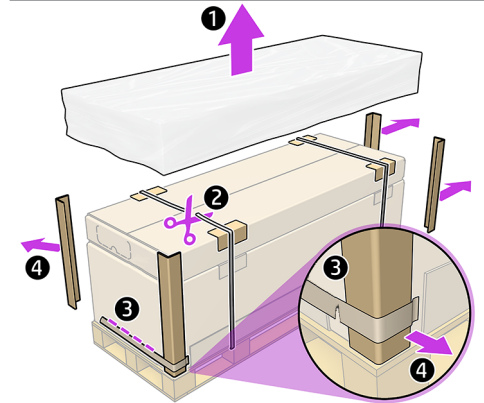
2



<https://www.hp.com/go/DesignJetT850/installation-video>

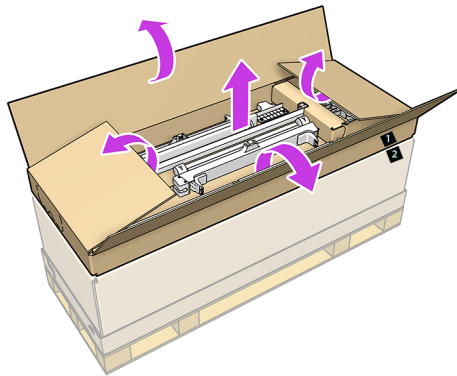
If this is first time you assemble a HP DesignJet T850 printer series, follow the QR code to watch the installation video before you begin.

3



Remove the protective sheet (1), cut the straps (2), take off the corner protectors (3/4)

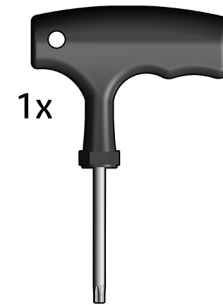
4



Open the box and take out the pieces from the inbox material.

Assemble the stand

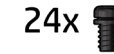
5



1x



12x

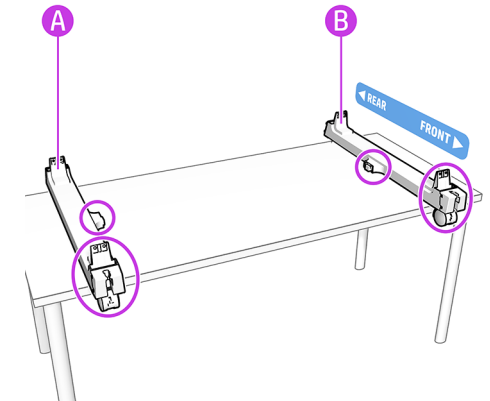


24x

Locate the different types of elements for assembly (Z).

Note: there are extra screws.

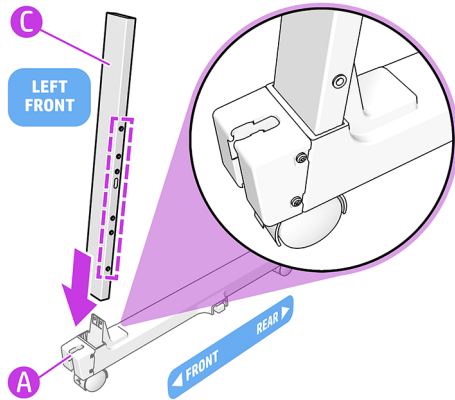
6



HP recommends completing the assembly on a table. Remove the 2x Bottom Cross Connectors (A and B) from the box.

Note: They are symmetrical Position both Bottom Cross Connectors (A and B) on a table with the pins/connectors of both bottom Connectors facing inwards.

7

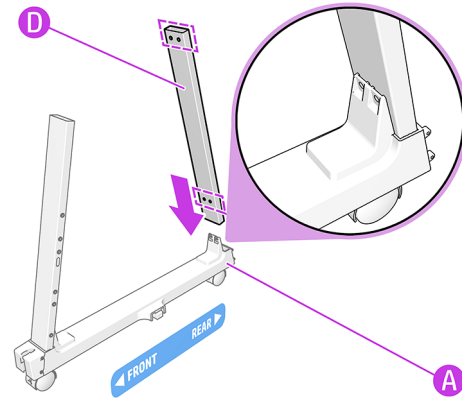


Assemble the Left Side:

Insert the left front-leg (C) onto the front of the left bottom cross-connector (A).

Note: The holes must face inwards.

8

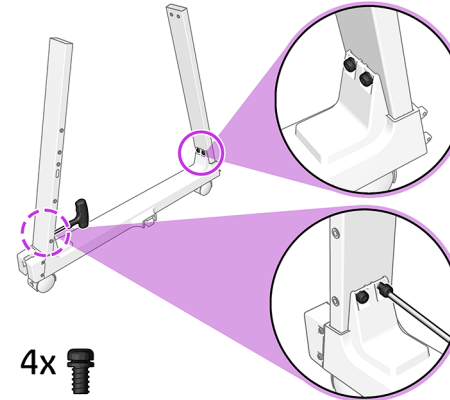


Insert the left rear-leg (D) onto the rear of the left bottom cross-connector (A).

Note: The holes furthest from the end go at the bottom.

Important: Check the holes of the legs and connector align.

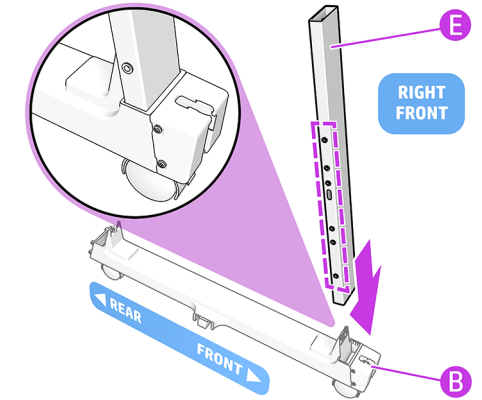
9



4x 

Fix the legs in place with two T25 screws each side.

10

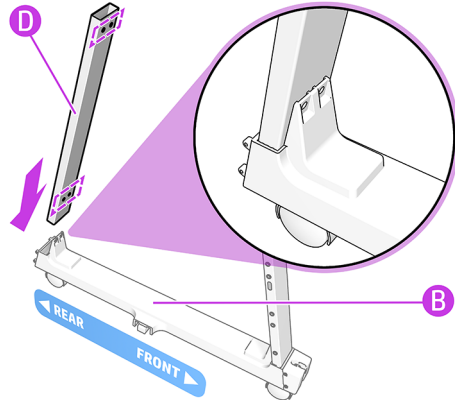


Assemble the Right Side:

Insert the right front-leg (E) onto the front of the right bottom cross-connector (B).

Note: The holes must face inwards.

11

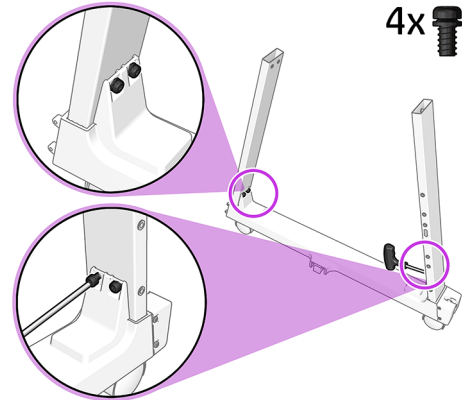


Insert the right rear-leg (D) onto the rear of the right-bottom cross-connector (B).

Note: The holes furthest from the end go at the bottom.

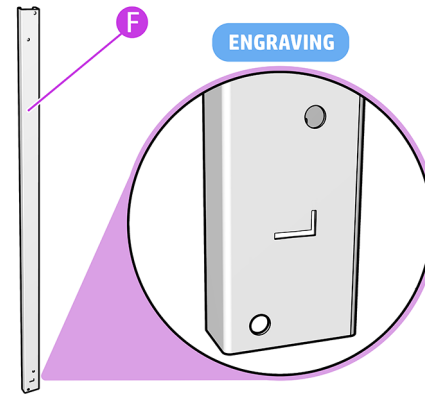
Important: Check the holes of the legs and connector align.

12



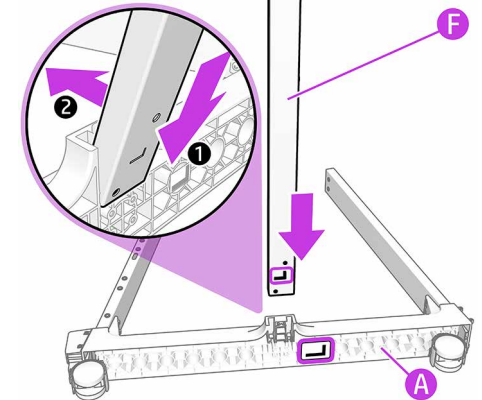
Fix the legs in place with two T25 screws each side.

13



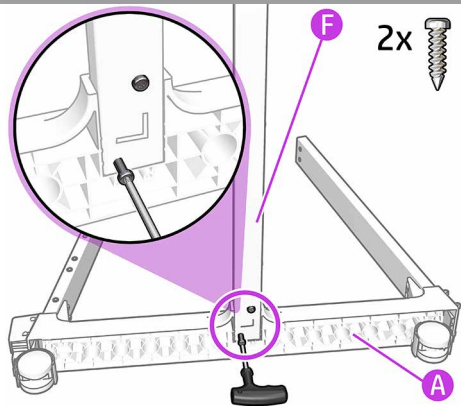
Identify the bottom cross-tube (F).
The holes and the letter 'L' must face towards you.

14



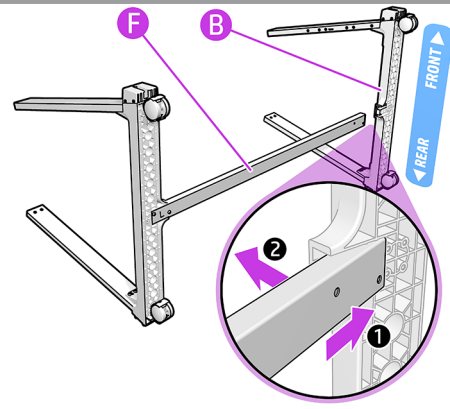
Important: Note the position of the holes on the left bottom cross-connector (A).
Insert the bottom cross-tube (F) diagonally into the slot on the left bottom cross-tube connector (A).

15



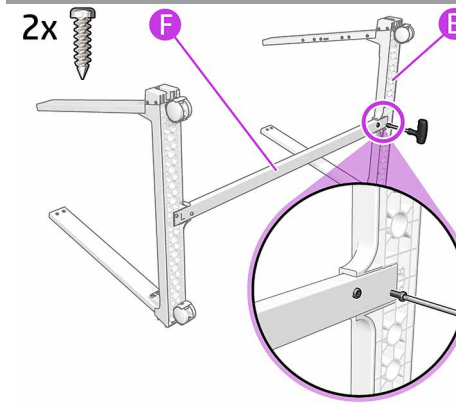
Fix the Bottom cross tube (F) to the Left Bottom Cross Connector (A) with two T25 screws.

16



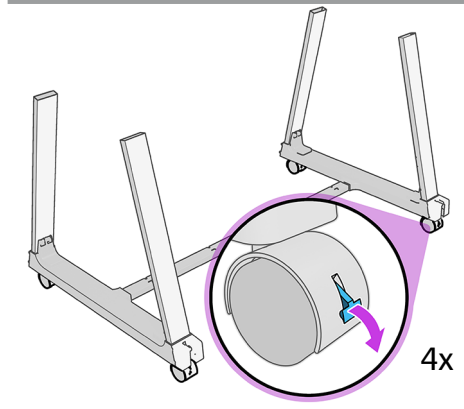
Insert the Bottom cross tube (F) diagonally into the right bottom connector (B).

17



Fix the Bottom cross tube (F) to the right connector (B) with two T25 screws.

18



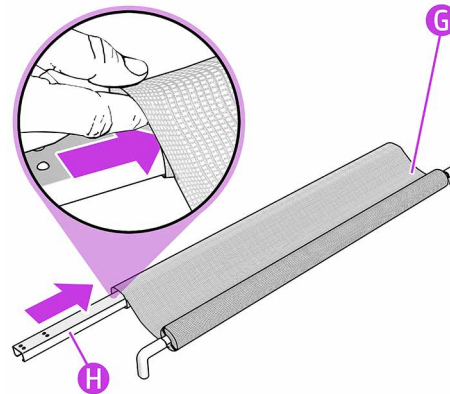
Place the stand upright and check the four wheels are locked.

Assemble the basket

⚠ Important

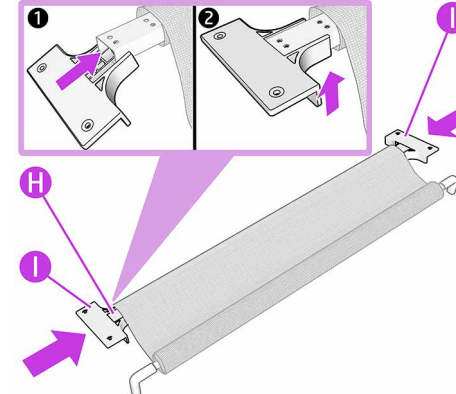
If you have purchased the HP DesignJet Sheet organizer and Stacker kit and HP DesignJet Sheet organizer, please follow the assembly instructions of the accessory then go back to step 25 of this set up poster.

19



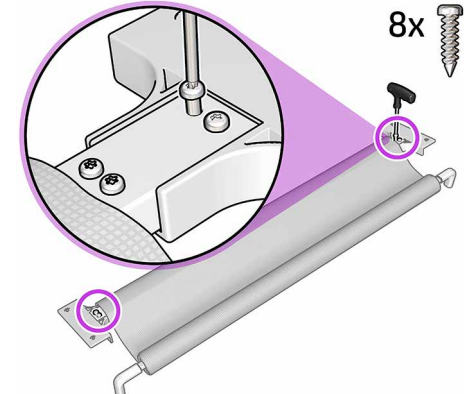
Unroll the basket fabric (G) and insert the rear cross-tube (H).

20



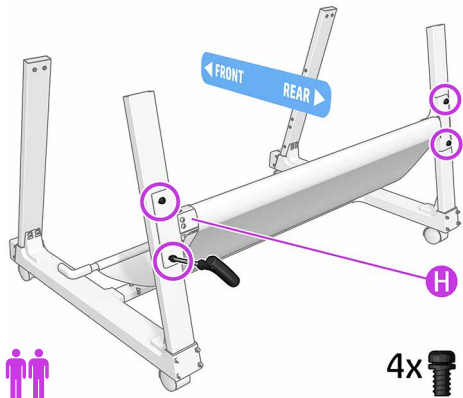
Diagonally insert the left and right brackets (I) to the rear cross-tube (H) by pushing them into place.

21



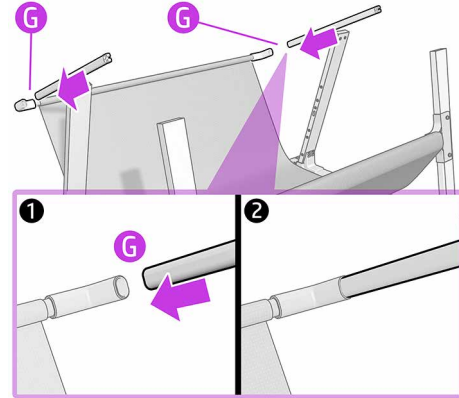
Fix the brackets in place with four T25 screws each side.

22



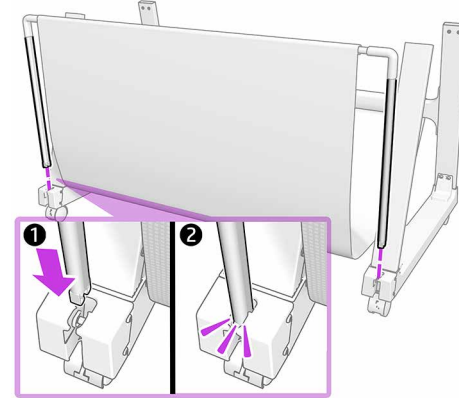
Note: Two people recommended for the assembly.
Fix the rear cross-tube (H) to the rear legs with two T25 screws each side.

23



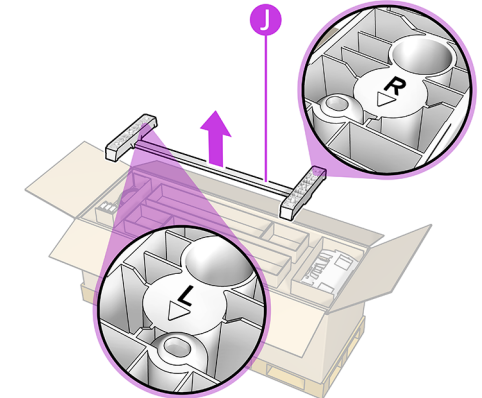
Slot the two tubes into the basket frame (G).

24



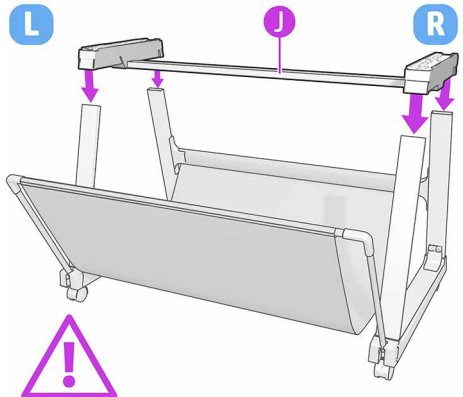
Insert the tubes into the slots at the front of both bottom cross-connectors. Push them firmly into place until you hear a click.

25



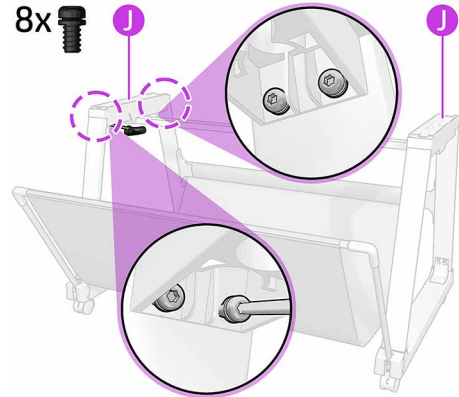
Remove the top cross-beam (J) from the box.
Note: There are letters to indicate the left 'L' and right 'R' side.

26



Make sure you identify the front and back of the stand.
Position yourself in front of the stand and carefully connect the top cross-beam (J) to it.
Note: There are marks on the plastic that indicate the left (L) and right side (R).

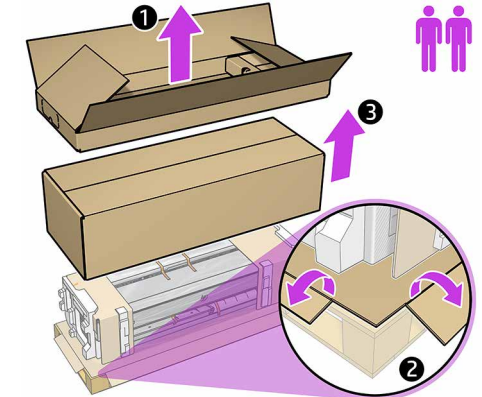
27



Fix the top cross-beam (J) to the stand with four T25 screws on the **left and right side**.

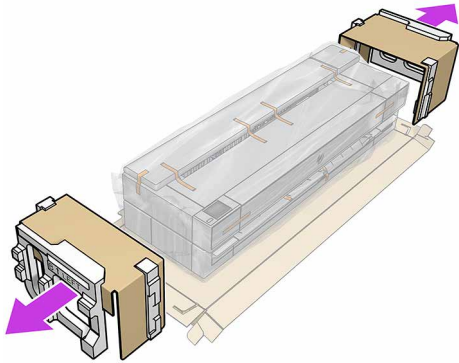
Attach the printer body to the stand assembly

28



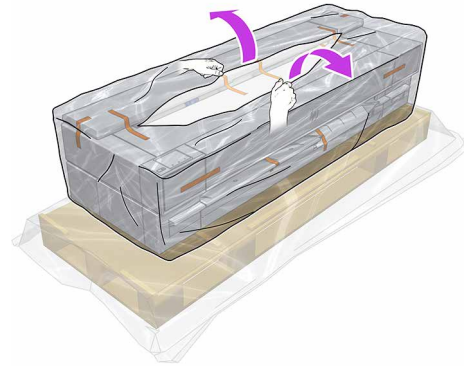
Important: Two people are required.
Remove the top box (1), open and pull down the corner protectors from the box (2) and lift up the box to remove it (3).

29



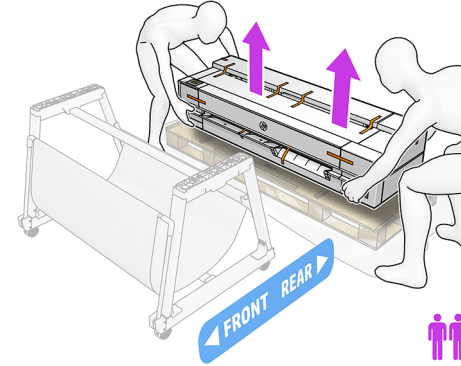
Pull and remove the endcaps.

30



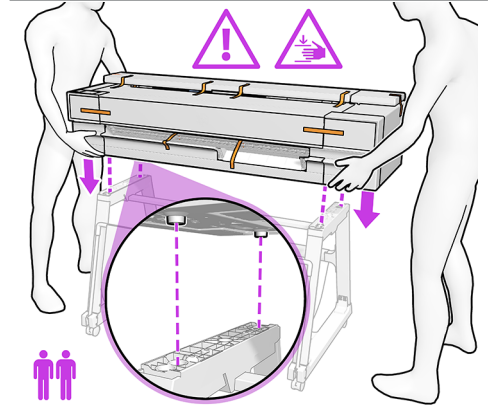
Uncover the printer by tearing open and pulling down the bag.

31



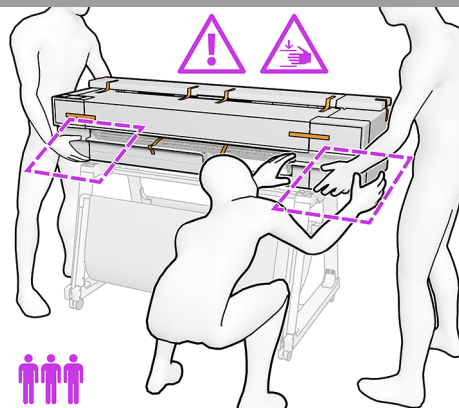
Important: Two people are required. Move the printer close to the stand, then with two people; lift the printer body by holding the base.

32



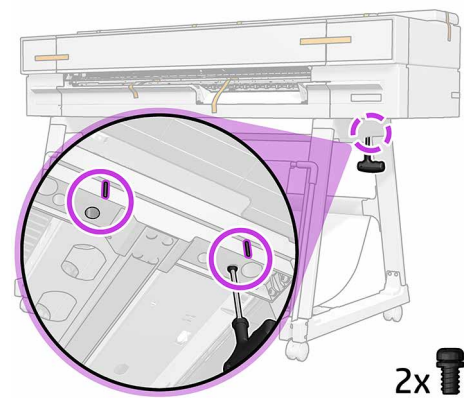
Important: Two people are required. **Caution:** Take care not to catch your fingers. Lower the printer into position onto the top cross-beam of the stand.

33



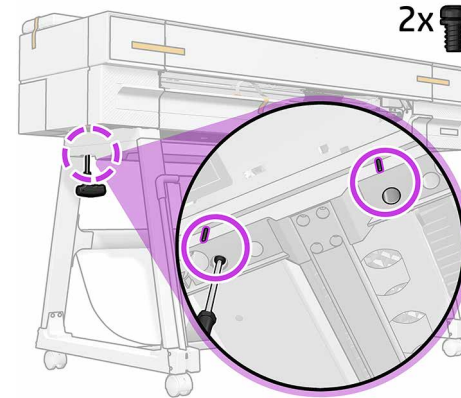
Important: Three people are required. **Caution:** Take care not to catch your fingers. Use a third person to adjust the stand position and guide the printer into the correct position.

34



From underneath, fix the right side of the printer to the stand with two T25 screws. **Note:** There are marks on the printer that indicate the position of the screws.

35

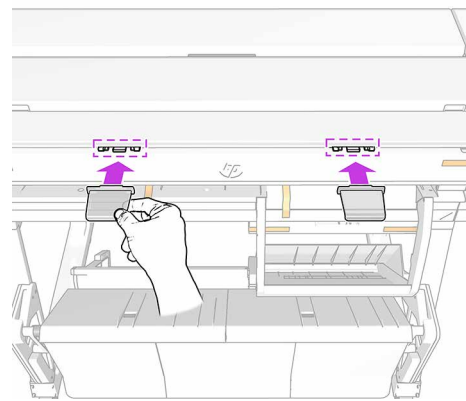


From underneath, fix the left side of the printer to the stand with two T25 screws. **Note:** There are marks on the printer that indicate the position of the screws.



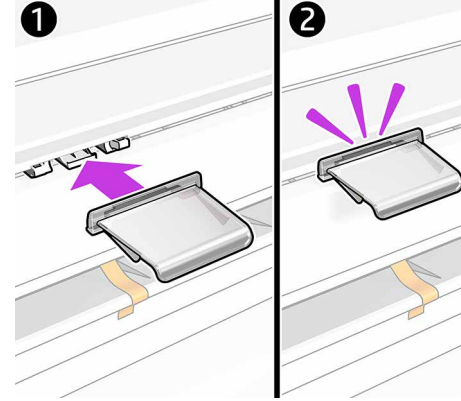
Step only needed for HP DesignJet T850 MFP printers

36



Only for HP DesignJet T850 MFP printers:
Locate the two refeed preventer mounts on the scanner input platen.

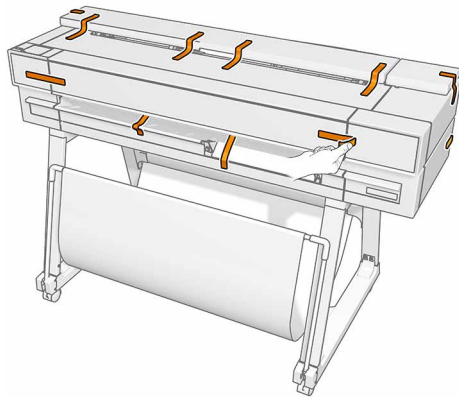
37



Only for HP DesignJet T850 MFP printers:
Clip the two refeed preventers into position on the mounts.

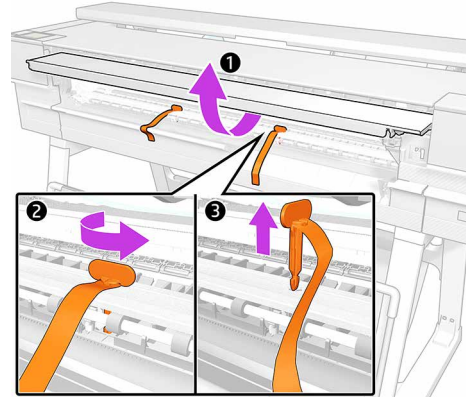
Remove the packaging

38



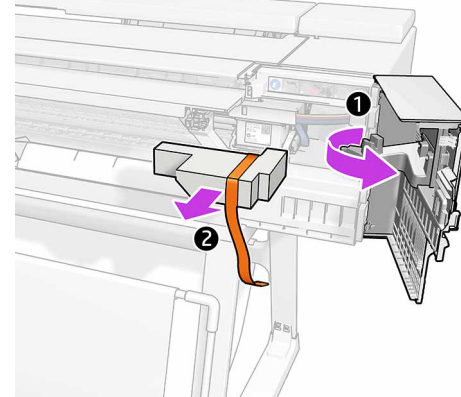
Remove the orange tapes from the top and rear of the printer.

39



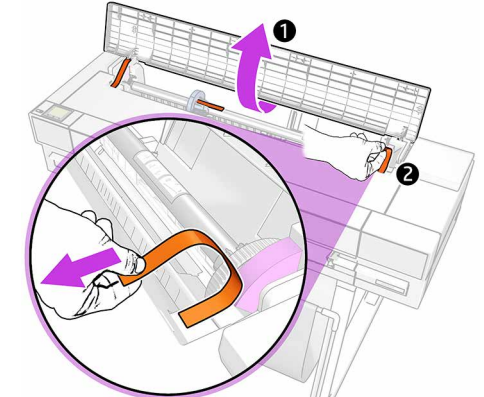
Open the main door. Carefully, rotate and remove the two pins from inside of the printer.

40



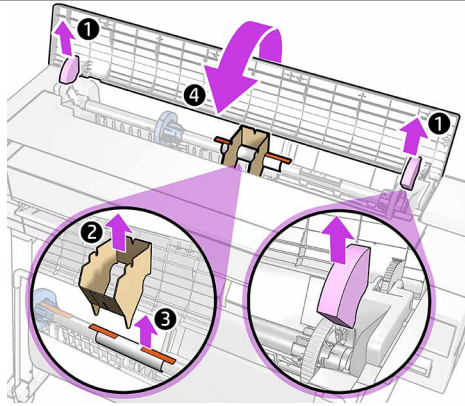
Open the printhead carriage door and remove the foam and close back.

41



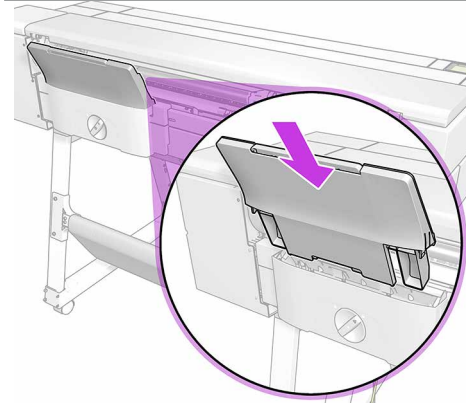
Open the roll cover and remove the two spindle tapes.

42



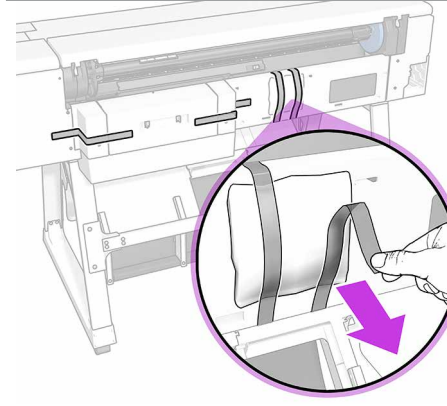
Remove the retainers and cardboard.
Close the roll cover.

43



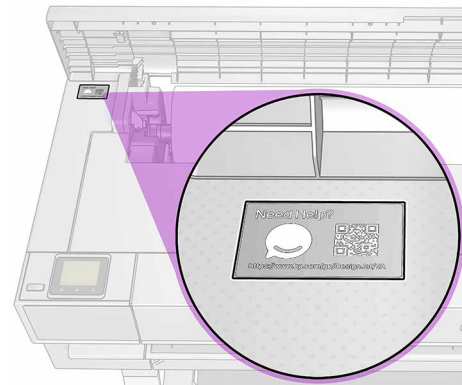
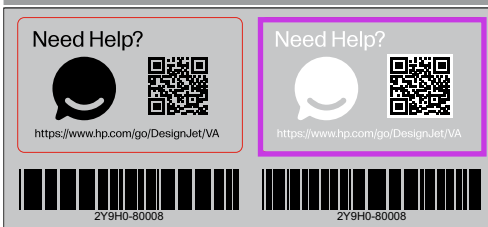
Install the tray.

44



Remove the tapes and desiccant bag.

45



Locate the HP Virtual assistant label.

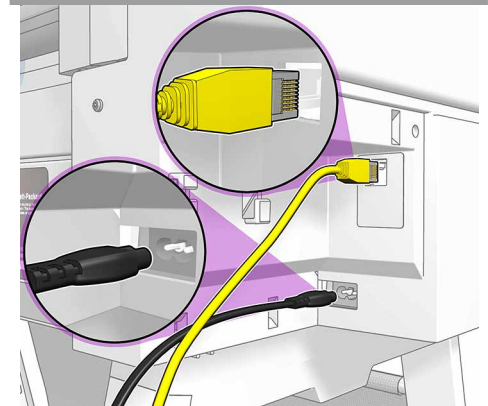
Note: You will find both black and white labels. HP recommends to use the white label for these printer series.

Attach it to the printer in a place where it can be easily seen.

HP's Virtual Assistant is always there to troubleshoot issues at any time of the day or night.

Set up the printer

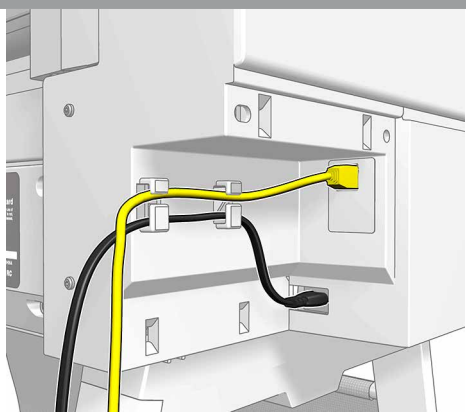
46



Connect a LAN cable (not included). Connect the power cable.

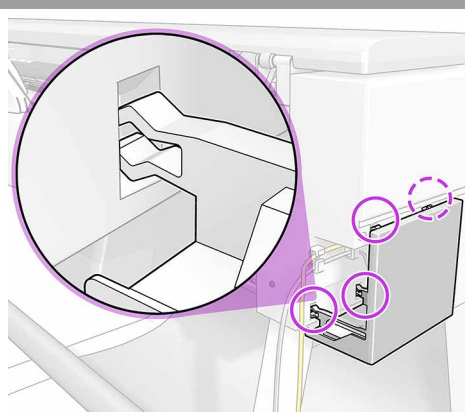
Note: If you prefer to connect via Wi-Fi, no need to connect the LAN cable. please follow the instructions on the control panel.

47



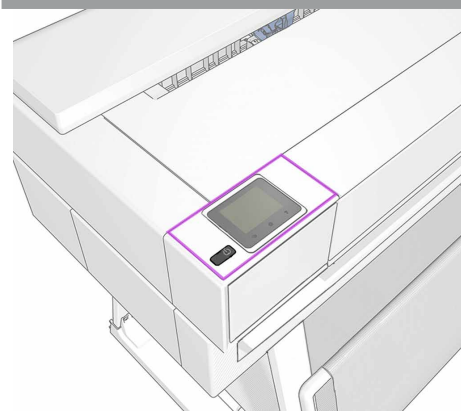
Route the ethernet cable and power cable through the cable clips.

48



Install the cable cover.

49



Note: Make sure all the covers are closed before power on the printer. Once all the cables are connected, check that the printer is on. The control panel will now guide you through setup.

50



<https://www.hp.com/go/T850/drivers>
<https://www.hp.com/go/DesignJetT850MFP/drivers>

Install the product software at :

51

<https://eoi.hpcloud.hp.com/>

To finish the installation process, it is highly recommended to register the printer by accessing: <https://eoi.hpcloud.hp.com/> and completing the End of Installation Registration survey. Registering the printer has a positive impact on the services provided including unit support and warranty entitlement.

© Copyright 2023 HP Development Company, L.P.
The information contained herein is subject to change without notice. The only warranties for HP products and services are set forth in the express warranty statements accompanying such products and services. Nothing herein should be construed as constituting an additional warranty. HP shall not be liable for technical or editorial errors or omissions contained herein.