



# Redefine long-term expectations

## HP LaserJet Enterprise M507 series

## HP LaserJet Enterprise MFP M528 series



HP product lines "stand out above the rest"<sup>1</sup>



The world's most secure printing<sup>2</sup>



Enhanced productivity keeps business moving



Low cost, low energy use

# The world's most secure printing<sup>2</sup>



HP printers have the industry's strongest security<sup>2</sup> because they're always on guard, continually detecting and stopping threats while adapting to new ones. And only HP printers automatically self-heal from attacks, so IT doesn't need to intervene.



## Always on guard

Only HP Enterprise printers offer built-in security features that are always on guard.<sup>2</sup>

- With HP Sure Start, each device regularly checks its operating code and repairs itself from attempted hacks.
- Whitelisting checks firmware during startup to help ensure it's authentic, good code—digitally signed by HP.
- Run-time intrusion detection continually monitors activity to detect and stop attacks, then automatically reboots.
- HP Connection Inspector inspects outgoing network connections to stop suspicious requests like malware.

Thwart potential attacks by receiving instant notification of security issues, so immediate action can be taken. This device works with tools like Splunk, ArcSight, McAfee, and SIEMonster.



## Opt for tighter security

Help protect the device with more than 200/250 (printers/MFPs) embedded security features.<sup>3</sup> Protect information in transit over the network and stored on the device—keys, passwords, certificates, and more. Store data on the 256-bit encrypted HP High-Performance Secure Hard Disk (standard on the MFP M528f and Flow MFP M528z models only).<sup>4</sup>

Easily develop, deploy, and integrate HP and third-party solutions with the HP Open Extensibility Platform. Add features such as card readers<sup>5</sup> and more through the Hardware Integration Pocket.<sup>6</sup> Further safeguard data stored on the device, using the HP Trusted Platform Module.<sup>7</sup>

Help ensure the security of confidential information with the optional proximity card reader.<sup>5</sup> Enter a PIN/password at the device to retrieve your print jobs.



## Your whole fleet. At your control

Centralise control of your printing environment with HP Web Jetadmin—and help build business efficiency.<sup>8</sup> Optional HP JetAdvantage Security Manager offers an effective, policy-based approach to help secure HP printing and imaging devices.<sup>9</sup> Easily set security configuration policies and automatically validate settings for every HP printer and MFP in your fleet.

HP JetAdvantage Secure Print<sup>10</sup> and HP Access Control (HPAC) help secure documents by requiring authentication to release print jobs. In addition, extend capabilities and easily customise with HPAC—integrate job accounting, manage rights, and establish quotas for things such as colour use.<sup>11</sup> Save IT time and make printing easy for the entire enterprise by using a single driver for all HP devices.<sup>12</sup>

### ▶ For more information

#### Fleet management

HP Web Jetadmin visit: [hp.com/go/webjetadmin](http://hp.com/go/webjetadmin)

Solution brief: <http://h20195.www2.hp.com/V2/GetPDF.aspx/4AA5-2718EEW.pdf>

Video: <http://hp.brightcovegallery.com/solutions/detail/video/4271055504001/>

HP Universal Print Driver visit: [hp.com/go/upd](http://hp.com/go/upd)

Solution brief: <http://h20195.www2.hp.com/V2/GetPDF.aspx/4AA2-4781EEW.pdf>

#### Security

HP JetAdvantage Security Solutions visit: [hp.com/go/printsecurity](http://hp.com/go/printsecurity)

Solution brief: <http://h20195.www2.hp.com/V2/GetPDF.aspx/4AA3-1295EEW.pdf>

Video: <http://hp.brightcovegallery.com/products/detail/video/4270905124001/>

HP JetAdvantage Security Manager visit: [hp.com/go/securitymanager](http://hp.com/go/securitymanager)

Brochure: <http://h20195.www2.hp.com/V2/GetPDF.aspx/4AA3-9275EEW.pdf>

Video: <http://hp.brightcovegallery.com/products/detail/video/4270837770001/>

# Enhanced productivity keeps business moving

Easy-to-use features, fast print speeds, and simple mobile printing options help you keep up with the speed of business.

## Take waiting out of your work day

Don't wait for documents. With the M507 series, receive your first page in as few as 5.9 seconds from ready mode<sup>13</sup> and 10 seconds from energy efficient sleep mode.<sup>14</sup> Print documents quickly—up to 43 pages per minute (ppm), A4.<sup>15</sup>



Accelerate workflow with single-pass, two-sided scanning up to 64/58 images per minute (ipm), A4 (black/colour) (Flow MFP M528z model only).<sup>16</sup>

Scan files directly to Microsoft® Office 365 and SharePoint®, plus email, USB, and network folders.<sup>17</sup>

## Loaded for productivity

Let high-volume jobs handle themselves. This device has a substantial 2,300-sheet capacity, so you can spend less time loading and reloading paper.<sup>18</sup> For details, see paper-handling accessories on page 11.

A built-in convenience stapler helps you save time and look professional (MFP M528f and Flow MFP M528z models only). Staple and collate multiple sets of documents of up to 50 pages each.<sup>19</sup>



Make everyday work more efficient. Equip employees to breeze through tasks using the pivoting 20.3 cm colour touchscreen on the MFP M528 series or the 10.9 cm touchscreen on the M507x model.<sup>20</sup>

Place your device where it suits your work team best—you almost won't notice it. This device fits in tight places to improve performance in almost any workspace.

## Designed to conserve

Help keep productivity up and energy use down. This efficient printer is designed for exceptionally low energy consumption—thanks to its innovative design and specially formulated toner.



Help cut costs with HP Auto-On/Auto-Off Technology<sup>21</sup> and HP Instant-on Technology<sup>22</sup>—intelligence that readies your printer right when you need it and turns it off when you don't.

# Low cost, low energy use



Choose an HP LaserJet Enterprise printer designed to handle business solutions securely and efficiently, and that helps conserve energy with HP EcoSmart black toner.<sup>23</sup> Keep up with the demands of growing business with a printer you can rely on.



## The toner cartridge you can trust

Stay productive with reliable HP EcoSmart black toner—engineered for high-speed printing and low energy consumption.<sup>23</sup>

Help reduce your impact—EcoSmart black toner cartridges are a smart, environmentally responsible purchase.

Count on easy recycling through HP Planet Partners at no additional charge.<sup>24</sup>



## More quality pages than ever before

Get the most prints for your money—up to 20,000 pages with the Extra High Yield Black Original LaserJet Toner Cartridge.<sup>25</sup> Specially redesigned Original HP Toner cartridges with JetIntelligence deliver professional-quality pages and peak printing performance.



## Help protect your investment

Don't put your device—and print quality—at risk. Help ensure the consistent Original HP quality you paid for with innovative, anti-fraud technology. Enable office-wide adherence to printing policies with cartridge authentication technology.



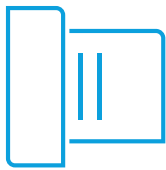
(HP Extra-high-yield Black Original LaserJet Toner Cartridge ~20,000 pages<sup>25</sup>)



# Give workgroups the speed they need



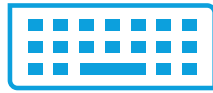
Accelerate workflow, improve accuracy, and easily connect people throughout your organisation with the MFP M528 series. Complete two-sided scan jobs quickly—up to 64 ipm for the Flow model<sup>16</sup>—and avoid extra steps with a device designed for maximum productivity.



## Easily scan and edit text

Capture text from documents with high accuracy. Easily scan documents, edit text, and save as a Microsoft Word or searchable PDF file with HP Scan and I.R.I.S. Readiris™ Pro OCR Software.

Walk up and print from or scan to a memory device using the easy-access USB port.<sup>26</sup>



## Fast scanning and input

Turn stacks of paper documents into digital files. Load up to 100 sheets into the automatic document feeder (ADF) for fast, unattended scanning—up to 14,000 pages per month (Flow model only).<sup>27,28</sup>

Enter data more quickly and accurately using the pull-out keyboard, one of the features available on the Flow MFP M528z model.<sup>29</sup>



## Every page, every time

Capture every page easily—with confidence. HP EveryPage gives employees smooth paper-handling capabilities to detect potential errors or missed pages on the spot—for scan jobs of all kinds.<sup>29</sup>

Help ensure every scanned document is properly oriented, cropped to size, and greyscale-optimised.

### Flow MFP features<sup>29</sup>



HP EveryPage featuring ultrasonic multi-feed detection



Faster scan speeds



Automatic page orientation, auto-crop, and auto-tone



Pull-out keyboard



Built-in OCR



Extended-life ADF

# Stay connected with secure mobile printing



Improve work team agility while also protecting the company network. Ethernet and optional wireless networking help users stay connected and work securely—throughout the office.<sup>30</sup> Add wireless direct<sup>31</sup> and NFC touch-to-print<sup>32</sup> to print directly from your mobile device.



## Print from a variety of mobile devices

Easily print documents, emails, PDFs, and more from smartphones and tablets running iOS, Android™, Windows® 8/10, and Google Chrome™ operating systems—generally no setup or apps required.<sup>33</sup>

Add the option to print with just a touch of your NFC-enabled smartphone or tablet to the print device.<sup>32</sup>



## Print from virtually anywhere

Submit print jobs while on the go from any device, and release at any of HP Roam-enabled office printer—simply and securely.<sup>34</sup>

Print jobs are submitted to the cloud and can then be securely retrieved from any enabled device in the office, at a home office, or at a growing number of public print locations.<sup>35</sup> There's no need to worry about device-to-printer compatibility or connectivity.



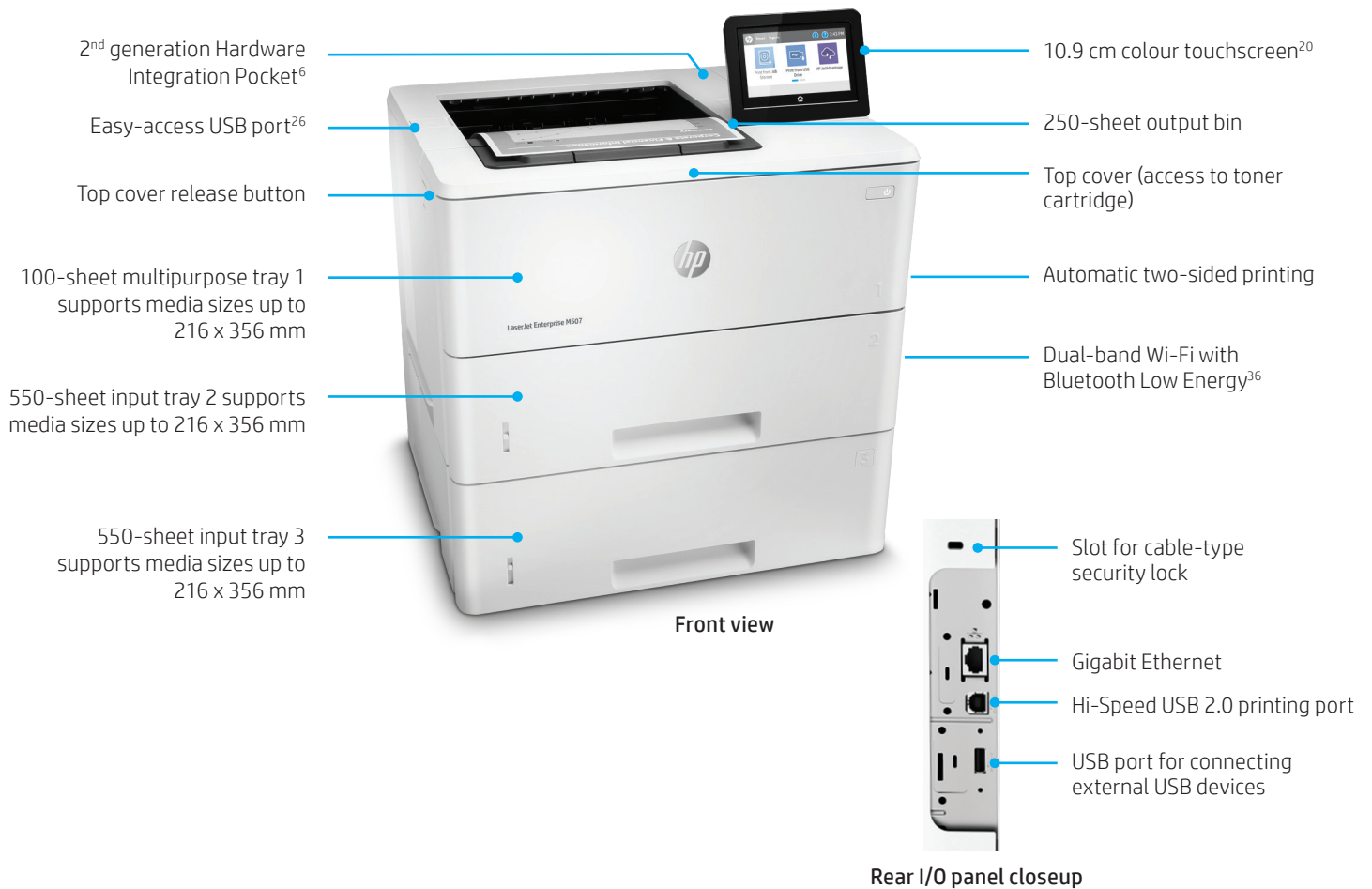
## Extend your printing reach

Keep your office connected. Easily access, print, and share printing resources with built-in Dual-band Wi-Fi with Bluetooth® Low Energy (M507x and Flow MFP M528z models only).<sup>36</sup>

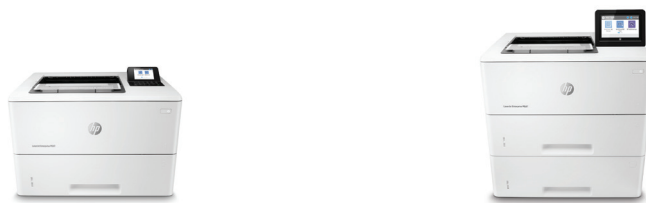
Use optional, 128-bit encrypted wireless direct printing to help keep data secure in transit and at rest—without accessing the company network—using smartphones, tablets, and notebook PCs (standard on the M507x and Flow MFP M528z models only).<sup>31</sup>

# Get to know the HP LaserJet Enterprise M507 series

## HP LaserJet Enterprise M507x shown



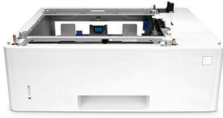
## Series at a glance



Model (product number)	M507dn (1PV87A)	M507x (1PV88A)
Print speed (A4) <sup>15</sup>	Up to 43 ppm ( <i>both models</i> )	
Control panel	6.9 cm LCD with keypad	10.9 cm touchscreen
100-sheet multipurpose tray 1, 550-sheet input tray 2	✓	✓
550-sheet paper tray 3	Optional	✓
Input capacity (standard/maximum <sup>18</sup> )	Up to 650/2,300 sheets	Up to 1,200/2,300 sheets
Output capacity	Up to 250 sheets ( <i>both models</i> )	
Hardware Integration Pocket <sup>6</sup>	✓	✓
Dual-band Wi-Fi with Bluetooth Low Energy <sup>36</sup>	Optional	Built-in
Wireless direct printing <sup>31</sup>	Optional	Built-in
NFC touch-to-print <sup>32</sup>	Optional	Optional

# HP LaserJet Enterprise M507 series – Configuration

Select one category of input accessory:



550-sheet Paper Tray (F2A72A)

- Add up to three (M507dn); Add up to two (M507x)
- Media up to 216 x 356 mm
- Media weight: 60 to 120 g/m<sup>2</sup>



Printer Cabinet (F2A73A)

- Select only one
- Store media up to 216 x 356 mm



Standard on M507dn:

- 100-sheet multipurpose tray 1
  - Media up to 216 x 356 mm
  - Media weight: 60 to 199 g/m<sup>2</sup>
- 550-sheet tray 2
  - Media up to 216 x 356 mm
  - Media weight: 60 to 120 g/m<sup>2</sup>



Standard on M507x model:

- 100-sheet multipurpose tray 1
  - Media up to 216 x 356 mm
  - Media weight: 60 to 199 g/m<sup>2</sup>
- 550-sheet tray 2
  - Media up to 216 x 356 mm
  - Media weight: 60 to 120 g/m<sup>2</sup>
- 550-sheet tray 3
  - Media up to 216 x 356 mm
  - Media weight: 60 to 120 g/m<sup>2</sup>



# Get to know the HP LaserJet Enterprise MFP M528 series

## HP LaserJet Enterprise Flow MFP M528z shown



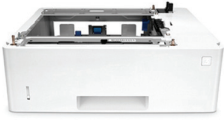
## Series at a glance



Model (product number)	MFP M528dn (1PV64A)	MFP M528f (1PV65A)	Flow MFP M528z (1PV67A)
Functions	Print, scan, copy (fax optional)	Print, scan, copy, fax	Print, scan, copy, fax
Print speed (A4) <sup>15</sup>	Up to 43 ppm ( <i>all models</i> )		
Convenience stapler <sup>19</sup>	Not available	✓	✓
Advanced workflow features <sup>29</sup>	Not available	Not available	✓
100-sheet multipurpose tray 1, 550-sheet input tray 2	✓	✓	✓
Input capacity (standard/max) <sup>18</sup>	Up to 650/2,300 sheets ( <i>all models</i> )		
Output capacity	Up to 250 sheets ( <i>all models</i> )		
HP High-Performance Secure Hard Disk <sup>4</sup>	Not available	✓	✓
Dual-band Wi-Fi with Bluetooth Low Energy <sup>36</sup>	Optional	Optional	Built-in
Wireless direct printing <sup>31</sup>	Optional	Optional	Built-in
NFC touch-to-print <sup>32</sup>	Optional	Optional	Optional

# HP LaserJet Enterprise MFP M528 series – Configuration

Select one category of input accessory:



550-sheet Paper Tray (F2A72A)

- Add up to three
- Media up to 216 x 356 mm
- Media weight: 60 to 120 g/m<sup>2</sup>



Printer Cabinet (F2A73A)

- Select only one
- Store media up to 216 x 356 mm



Standard on MFP M528 series:

- 100-sheet multipurpose tray 1
  - Media up to 216 x 356 mm
  - Media weight: 60 to 199 g/m<sup>2</sup>
- 550-sheet tray 2
  - Media up to 216 x 356 mm
  - Media weight: 60 to 120 g/m<sup>2</sup>

# Paper-handling accessories

The HP LaserJet Enterprise M507 series and MFP M528 series may be configured with optional input accessories described in the table below. Other optional accessories are included in the Ordering information section on page 20.

The M507dn model and MFP M528 series come standard with a 100-sheet multipurpose tray and one 550-sheet tray that both support media up to 216 x 356 mm. These models can add up to three additional 550-sheet input trays and a cabinet.

The M507x model comes standard with a 100-sheet multipurpose tray and two 550-sheet trays that support media up to 216 x 356 mm. This model can add up to two additional 550-sheet input trays and a cabinet. All optional accessories support media up to 216 x 356 mm.



550-sheet Paper Tray (F2A72A)

Supports media sizes up to 216 x 356 mm



Printer Cabinet (F2A73A)

Storage for paper and supplies

<b>Optional</b>	Add up to three (M507dn, MFP M528 series) Add up to two (M507x)	Add up to one ( <i>all models</i> )
<b>Maximum device input with accessory<sup>18</sup></b>	<p><b>M507dn, MFP M528 series:</b></p> <p>1,200 sheets (with one tray)</p> <p>1,750 sheets (with two trays)</p> <p>2,300 sheets (with three trays)</p> <p><b>M507x:</b></p> <p>1,750 sheets (with one tray)</p> <p>2,300 sheets (with two trays)</p>	Not applicable

# HP LaserJet Enterprise M507 series technical specifications

	HP LaserJet Enterprise M507dn	HP LaserJet Enterprise M507x
<b>Product number</b>	1PV87A	1PV88A
<b>Functions</b>	Print ( <i>both models</i> )	
<b>Control panel/data entry</b>	6.9 cm (2.7-in) QVGA LCD (colour graphics) display with 24-key pad	10.9 cm (4.3-inch) colour touchscreen; rotating (adjustable angle) display
<b>Print speed (A4/letter)<sup>15</sup></b>		
Single-sided	Up to 43/45 ppm ( <i>both models</i> )	
Two-sided	Up to 34/36 ipm ( <i>both models</i> )	
<b>Print speed (A5, landscape)<sup>37</sup></b>	Up to 65 ppm ( <i>both models</i> )	
<b>First page out (A4 and letter)</b>	From ready: <sup>13</sup> as fast as 5.9 seconds ( <i>both models</i> ) From sleep: <sup>14</sup> as fast as 10.0 seconds ( <i>both models</i> )	
<b>Print resolution</b>	Up to 600 x 600 dpi (normal); Up to 1200 x 1200 dpi (best) ( <i>both models</i> )	
<b>Features</b>	Printing Print preview, duplex printing, print multiple pages per sheet (2, 4, 6, 9, 16), collation, watermarks, store print jobs, easy-access USB ( <i>both models</i> )	
<b>Processor</b>	1.2 GHz ( <i>both models</i> )	
<b>Memory</b>	Standard: 512 MB; Maximum: 1.5 GB <sup>38</sup> when accessory DIMM is installed ( <i>both models</i> )	
<b>Durability ratings</b>		
RMPV <sup>39</sup>	2,000 pages to as high as 7,500 pages ( <i>both models</i> )	
Duty cycle <sup>40</sup>	Up to 150,000 pages ( <i>both models</i> )	
<b>Media specifications</b>		
Input capacity	Up to 650/2,300 sheets (standard/maximum <sup>18</sup> ) Tray 1: up to 100 sheets Tray 2: up to 550 sheets	Up to 1,200/2,300 sheets (standard/maximum <sup>18</sup> ) Tray 1: up to 100 sheets Tray 2: up to 550 sheets Tray 3: up to 550 sheets
Output capacity	Up to 250 sheets ( <i>both models</i> )	
Two-sided printing	Automatic	
Media sizes	Tray 1: A4, A5, A6, RA4, B5 (JIS), B6 (JIS), 10 x 15 cm, Oficio (216 x 340 mm), 16K, postcards (JIS single and double), envelopes (B5, C5, C6, DL); Letter, legal, executive, statement, 3 x 5 in, 4 x 6 in, 5 x 7 in, 5 x 8 in, 8.5 x 13 in, envelopes (No. 9, No. 10, Monarch); Custom media: 76 x 127 to 216 x 356 mm (3 x 5 to 8.5 x 14 in)  Tray 2, optional trays 3-5: A4, A5, A6, RA4, B5 (JIS), B6 (JIS), Oficio (216 x 340 mm), 16K, postcards (JIS double); Letter, legal, executive, statement, 5 x 7 in, 5 x 8 in, 8.5 x 13 in; Custom media: 105 x 148 to 216 x 356 mm (4.1 x 5.83 to 8.5 x 14 in)	
Media weights	Tray 1: 60 to 199 g/m <sup>2</sup> (16 to 53 lb) Tray 2, optional trays 3-5: 60 to 120 g/m <sup>2</sup> (16 to 32 lb)	
Media types	Paper (bond, colour, letterhead, plain, pre-printed, pre-punched, recycled, rough), envelopes, labels, cardstock, transparencies, user-defined	
<b>Print languages</b>	HP PCL 6, HP PCL 5 (HP PCL 5 driver available from the Web only), HP postscript level 3 emulation, native PDF printing (v 1.7), Apple AirPrint <sup>41</sup>	
<b>Fonts</b>	105 internal TrueType fonts scalable in HP PCL, 92 internal scalable fonts in HP postscript Level 3 emulation (Euro symbol built-in), 1 internal Unicode font (Andale Mono World Type), 2 Internal Windows Vista® 8 fonts (Calibri, Cambria), additional font solutions available via third-party flash memory cards, HP LaserJet fonts and IPDS Emulation available at <a href="http://hp.com/go/laserjetfonts">hp.com/go/laserjetfonts</a>	
<b>Connectivity</b>	Standard: 2 Hi-Speed USB 2.0 Host; 1 Hi-Speed Device USB 2.0; 1 Gigabit Ethernet; Hardware Integration Pocket <sup>5</sup>	
		Plus: Dual-band Wi-Fi with Bluetooth Low Energy <sup>36</sup>

	HP LaserJet Enterprise M507dn	HP LaserJet Enterprise M507x
<b>Mobile printing</b>	Standard: Apple AirPrint, <sup>41</sup> HP ePrint, <sup>42</sup> Mopria-certified, HP Roam-capable for easy printing, <sup>34</sup> Google Cloud Print™ 2.0	
		Plus: Wireless direct printing <sup>31</sup>
	Optional: Wireless direct printing, <sup>31</sup> NFC touch-to-print <sup>32</sup>	Optional: NFC touch-to-print <sup>32</sup>
<b>Network capabilities</b>	Standard: via HP Jetdirect Ethernet embedded print server supports: 10Base-T, 100Base-Tx, 1000Base-T; 802.3az (EEE) support on Fast Ethernet and Gigabit links; IPsec	
	Optional: 802.11b/g/n wireless networking and second Ethernet port <sup>30</sup>	
<b>Network protocols</b>	Via built-in networking solution: TCP/IP, IPv4, IPv6; Print: TCP-IP port 9100 Direct Mode, LPD (raw queue support only), Web Services Printing, IPP 2.0, Apple AirPrint, <sup>41</sup> HP ePrint, <sup>42</sup> FTP Print, Google Cloud Print; Discovery: SLP, Bonjour, Web Services Discovery; IP Config: IPv4 (BootP, DHCP, AutoIP, Manual, TFTP Config, ARP-Ping), IPv6 (Stateless Link-Local and via Router, Statefull via DHCPv6); Management: SNMPv2/v3, HTTP/HTTPS, Telnet, TFTP Config, Syslog; Security: SNMPv3, SSL Cert Management, IPsec/Firewall, ACL, 802.1x	
<b>Security</b>	<p>Identity Management: Kerberos authentication, LDAP authentication, 1000 user PIN codes, optional HP and third party advanced authentication solutions (e.g., badge readers)</p> <p>Network: IPsec/firewall with Certificate, Pre-Shared Key, Kerberos authentication; Supports WJA-10 IPsec configuration Plug-in, 802.1X authentication (EAP-PEAP, EAP-TLS), SNMPv3, HTTPS, Certificates, Access Control List, HP Trusted Platform Module (TPM) comes standard</p> <p>Data: Storage encryption, encrypted PDF and email (uses FIPS 140 validated cryptographic libraries from Microsoft), Secure Erase, SSL/TLS (HTTPS), encrypted credentials</p> <p>Device: Security lock slot, USB port disablement, Hardware Integration Pocket for security solutions,<sup>6</sup> Intrusion Detection with Red Balloon Security Technology (constant in-device monitoring for attacks), HP Sure Start Secure Boot (BIOS integrity checking with self-healing capability), Whitelisting (loads only known-good code (DLLs, EXEs, etc.)), HP Connection Inspector (helps ensure network connections to device are safe)</p> <p>Security management: Compatible with HP JetAdvantage Security Manager,<sup>9</sup> HP Printer Security Plugin for Microsoft SCCM, Device Security Syslog Messages processed and accessible in Arcsight, Splunk, McAfee (ESM), and SIEMonster SIEMs</p> <p>For more security settings, go to <a href="http://hp.com/ctg/Manual/c03602120">hp.com/ctg/Manual/c03602120</a></p>	
<b>Printer management</b>	HP Device Toolbox, HP JetAdvantage Security Manager, <sup>9</sup> HP Printer Assistant, HP Web Jetadmin Software, <sup>8</sup> HP SNMP Proxy Agent, HP WS Pro Proxy Agent, Printer Administrator Resource Kit for HP Universal Print Driver <sup>12</sup> (Driver Configuration Utility, Driver Deployment Utility, Managed Printing Administrator)	
<b>Compatible operating systems<sup>43</sup></b>	<p>Windows OS compatible with In-Box Driver: Windows 7 all 32- and 64-bit editions, Windows 8.1 all 32- and 64 bit editions, Windows 10 all 32- and 64-bit editions</p> <p>Windows OS compatible with Universal Print Driver<sup>12</sup> (from <a href="http://hp.com">hp.com</a>): Windows 7 all 32- and 64-bit editions, Windows 8.1 all 32- and 64-bit editions, Windows 10 all 32- and 64-bit editions</p> <p>Mac OS (HP Print Drivers available from <a href="http://hp.com">hp.com</a> and Apple Store): OS X 10.13 High Sierra, OS X 10.14 Mojave, OS X 10.15</p> <p>Mobile OS (In-OS drivers): Android™</p> <p>Linux® OS (In-OS HPLIP): SUSE Linux (13.2, 42.1), Fedora (22-24), Linux Mint (17-17.3, 18), Boss (5.0), Ubuntu (12.04, 14.04, 15.1, 16.04, 16.10), Debian (7.0-8.6), Red Hat Enterprise (6, 7)</p> <p>Other OS: UNIX®</p>	
<b>Compatible network operating systems</b>	<p>Windows OS compatible with In-Box Driver: Windows Server® 2008 32-/64-bit, Windows Server 2008 R2 64-bit</p> <p>Windows OS compatible with Universal Print Driver (UPD)<sup>12</sup> or Product-Specific drivers from <a href="http://hp.com">hp.com</a>: Windows Server 2008/2008 R2 64-bit, Windows Server 2012/2012 R2 64-bit, Windows Server 2016 64-bit, Windows Server 2019</p> <p>Citrix® (on Windows Server 2008 R2 SP1 Edition): Citrix XenApp 6.0/6.5, Citrix XenApp and XenDesktop® 7.5, (supports Windows Server 2008 R2 SP1 operating system), XenServer 6.x+</p> <p>Citrix (on Windows Server 2012/2012R2): Citrix XenApp and Citrix XenDesktop 7.x</p> <p>Novell/Micro Focus (<a href="http://novell.com/products/iprint">novell.com/products/iprint</a>): Novell iPrint Appliance v1.1, Novell Open Enterprise Server 11/SP1</p> <p>Novell iPrint Clients (<a href="http://novell.com/products/iprint">novell.com/products/iprint</a>): All Windows platforms: recommend v5.94+ Services Terminal Server Cluster Server</p>	
<b>System requirements, Windows</b>	A compatible operating system (see above); 2 GB available hard disk space; Internet connection, USB port, Internet browser (For OS hardware requirements see <a href="http://microsoft.com">microsoft.com</a> )	
<b>System requirements, Macintosh</b>	A compatible operating system (see above); 2 GB available hard disk space; Internet connection or USB port (For OS hardware requirements see <a href="http://apple.com">apple.com</a> )	



	HP LaserJet Enterprise M507dn	HP LaserJet Enterprise M507x
<b>Dimensions (width x depth x height)</b>	Operating: 418 x 376 x 299 mm (16.46 x 14.80 x 11.77 in)  Maximum: <sup>44</sup> 418 x 639 x 299 mm (16.46 x 25.16 x 11.77 in)	Operating: 418 x 376 x 481 mm (16.46 x 14.80 x 18.94 in)  Maximum: <sup>44</sup> 418 x 639 x 481 mm (16.46 x 25.16 x 18.94 in)
<b>Weight (with print cartridge)</b>	11.48 kg (25.5 lb)	16.34 kg (36.3 lb)
<b>What's in the box</b>	HP LaserJet Enterprise printer, HP Black LaserJet set-up cartridge (~5,000 pages), <sup>25</sup> Power cord, User guide, Support flyers, Warranty cards, Required erratas	
<b>Downloadable software</b>	<p>From <a href="http://123.hp.com">123.hp.com</a>: HP Easy Start (Guided Software Install for Windows and Mac)</p> <p>From <a href="http://hp.com">hp.com</a> for Windows OS: Full solution software and drivers, Basic solution software and drivers, HP PCL6 XPS Discrete Print Driver, Product Documentation and Support</p> <p>From <a href="http://hp.com">hp.com</a> for Mac OS: HP Easy Start (Guided Software Install), HP Mac PS Print Driver, HP Easy Admin</p> <p>For Mobile OS, iOS: For more information, see <a href="http://hp.com/go/businessmobileprinting">hp.com/go/businessmobileprinting</a>; Android: For more information, see <a href="http://hp.com/go/businessmobileprinting">hp.com/go/businessmobileprinting</a></p> <p>From <a href="http://hp.com">hp.com</a> for printer administrators: Printer Administrator Resource Kit (Driver Configuration Utility, Driver Deployment Utility, Managed Printing Administrator), HP Universal Print Drivers<sup>32</sup> (PCL6 GDI and PS GDI for Windows), HP ePrint Software<sup>42</sup> (Mobile Driver for Windows), SAP Print Drivers (For more information, see <a href="http://support.hp.com/us-en/document/c05051702">support.hp.com/us-en/document/c05051702</a>), HP Web Jetadmin,<sup>8</sup> HP JetAdvantage Security Manager,<sup>9</sup> ReadIris, HP Roam for Business,<sup>34</sup> HPLIP Linux Printer Driver (For more information, see <a href="http://hplipopensource.com/hplip-web/index.html">http://hplipopensource.com/hplip-web/index.html</a>), Unix Model Script Printer Driver: <a href="http://support.hp.com/us-en/document/c04222920">support.hp.com/us-en/document/c04222920</a></p>	
<b>Warranty</b>	One-year, next-business day, onsite warranty. Warranty and support options vary by product, country, and local legal requirements. Contact your contractual partner or go to <a href="http://hp.com/support">hp.com/support</a> to learn about HP world-class service and support options in your region.	

# HP LaserJet Enterprise M507 series environmental specifications

	HP LaserJet Enterprise M507dn	HP LaserJet Enterprise M507x
<b>Environmental ranges</b>		
Temperatures	Recommended operating: 15 to 27° C (59 to 80.6° F); Operating: 10 to 32.5° C (50 to 90.5° F); Storage: -20 to 40° C (-4 to 104° F)	
Relative Humidity	Recommended operating range: 30 to 70% RH; Operating range: 10 to 80% RH	
<b>Acoustic pressure emissions<sup>45</sup></b>		
	Ready mode: 25 dB(A)	Ready mode: 24 dB(A)
	Active print: 55 dB(A)	Active print: 54 dB(A)
<b>Acoustic power emissions</b>		
	Ready mode: 3.9 B(A)	Ready mode: 3.9 B(A)
	Active print: 6.9 B(A) <sup>46</sup>	Active print: 6.8 B(A) <sup>46</sup>
<b>Power specifications<sup>47</sup></b>		
Power supply	Built-in power supply; Input Voltage: 100 to 240 VAC, 50/60 Hz	
Power consumption	Printing: 601 watts; Ready: 7.6 watts; Sleep: 2.61 watts; Auto-Off/Manual On: 0.06 watts; Off: 0.06 watts; Auto-Off/Wake on LAN: 0.73 watts	
Typical Electricity Consumption (TEC)	Blue Angel: 1.257 kWh/week; ENERGY STAR®: 1.3 kWh/week	
Energy-saving features	HP Auto-On/Auto-Off Technology; <sup>21</sup> Instant-on Technology; <sup>22</sup> Instant-on Copy	
<b>Environmental specifications</b>		
	Blue Angel compliant; ENERGY STAR certified; CECP; EPEAT Gold; <sup>48</sup> mercury-free	Blue Angel compliant; ENERGY STAR certified; CECP; EPEAT Silver; <sup>48</sup> mercury-free
<b>Safety and regulatory compliance</b>		
	IEC 60950-1:2005 +A1:2009 +A2:2013 (International); EN60950-1:2006 +A11:2009 +A1:2010 +A12:2011 +A2:2013 (EU); EN 60825-1:2014/IEC 60825-1:2014 (Class 1 Laser Product); EN 62479:2010/IEC 62479:2010; Low Voltage Directive 2014/35/EU with CE Mark (Europe); GS Certificate (Germany, Europe); UL/cUL Listed and UC CoC (US/Canada); CAN/CSA C22.2 No. 60950-1-07 2nd Ed. 2011-12; Compliance with Laser safety standards 21 CFR 1040.10 and 1040.11 except for deviations pursuant to Laser notice No. 50, Dated June 24, 2007; Other safety approvals as required by individual countries.	
<b>Electromagnetic emission standard</b>		
	CISPR 22:2008 (International) - Class A, CISPR32:2012 (International) - Class A, EN 55032: 2012 (EU) - Class A, EN 61000-3-2: 2014, EN 61000-3-3: 2013, EN 55024: 2010, EMC Directive 2014/30/EU, FCC CFR 47 Part 15 Class A/ICES-003, Issue 6 Class A. Other EMC approvals as required by individual countries.	

# HP LaserJet Enterprise MFP M528 series technical specifications

	HP LaserJet Enterprise MFP M528dn	HP LaserJet Enterprise MFP M528f	HP LaserJet Enterprise Flow MFP M528z
<b>Product number</b>	1PV64A	1PV65A	1PV67A
<b>Functions</b>	Print, scan, copy, and optional fax	Print, scan, copy, and fax	Print, scan, copy, and fax
<b>Control panel/data entry</b>	20.3 cm (8.0-inch) colour touchscreen; rotating (adjustable angle) display; illuminated Home button (for quick return to the Home menu)		Plus: Pull-out keyboard
<b>Print speed (A4/letter)<sup>15</sup></b>			
Single-sided	Up to 43/45 ppm ( <i>all models</i> )		
Two-sided	Up to 34/36 ipm ( <i>all models</i> )		
<b>Print speed (A5, landscape)<sup>37</sup></b>	Up to 66 ppm ( <i>all models</i> )		
<b>First page out (A4 and letter)</b>	From ready: <sup>13</sup> as fast as 6.0 seconds ( <i>all models</i> ) From sleep: <sup>14</sup> as fast as 13.0 seconds ( <i>all models</i> )		
<b>Print resolution</b>	Up to 600 x 600 dpi (normal); Up to 1200 x 1200 dpi (best) ( <i>all models</i> )		
<b>Scanning resolution</b>	Up to 600 x 600 dpi ( <i>all models</i> )		
<b>ADF scan speed (A4/letter)<sup>16</sup></b>			
Single-sided	Up to 43/45 ppm (black) Up to 38/40 ppm (colour)	Up to 43/45 ppm (black) Up to 38/40 ppm (colour)	Up to 45/48 ppm (black and colour)
Two-sided	Up to 43/45 ipm (black) Up to 38/40 ipm (colour)	Up to 43/45 ipm (black) Up to 38/40 ipm (colour)	Up to 64/68 ipm (black) Up to 58/60 ipm (colour)
<b>Features</b>			
Printing	Print preview, duplex printing, print multiple pages per sheet (2, 4, 6, 9, 16), collation, watermarks, store print jobs, easy-access USB <sup>26</sup>		
Scanning	Flatbed scanner, up to 216 x 356 mm (8.5 x 14 inches); 100-sheet ADF with two-sided, single-pass scanning; Advanced features: optimise text/picture, image adjustments, job build, output quality setting, selectable scan resolution 75 to 600 dpi, auto-detect colour, edge erase, job notification, blank page suppression; HP Quick Sets		Plus: HP EveryPage, embedded Optical Character Recognition (OCR), auto-orientation, auto-crop-to-page, auto-tone
Digital sending	Scan to email, save to network folder, save to USB drive, send to FTP, send to Internet fax, local address book, SMTP over SSL, blank page removal, edge erase, auto colour sense, auto-crop-to-content, compact PDF		Plus: send to LAN fax, send to Microsoft SharePoint, OCR, auto tone, auto-orientation, multi pick detect, auto-straighten, auto-crop-to-page
File formats	PDF, JPEG, TIFF, MTIFF, XPS, PDF/A; Print from easy-access USB: PDF, PS, Print Ready files (.prn, .pcl, .cht)		Plus: TEXT (OCR), unicode TEXT (OCR), RTF (OCR), searchable PDF (OCR), searchable PDF/A (OCR), HTML (OCR), CSV (OCR); scan to easy-access USB: PDF, JPEG, TIFF, MTIFF, XPS, PDF/A, TEXT (OCR), unicode TEXT (OCR), RTF (OCR), searchable PDF (OCR), searchable PDF/A (OCR), HTML (OCR), CSV (OCR); print from easy-access USB: PDF, PS, print ready files (.prn, .pcl, .cht)
Copying	Copy resolution: up to 600 x 600 dpi; Copy speed: up to 43/45 copies per minute (cpm) (A4/letter, single-sided) and up to 34/36 cpm (A4/letter, two-sided); Advanced features: Auto scale, reduce/enlarge from scanner glass (25 to 400%), collate, auto-colour detection, image adjustments (darkness, background cleanup, sharpness), job build		
Faxing	Fax speed: 33.6 kbps/3 seconds per page; Stored faxes, fax archiving, fax forwarding, scale to fit, fax address book, LAN/Internet fax, fax number confirmation, holiday fax schedule, junk barrier, auto-redialing, fax broadcasting up to 210 maximum locations; Up to 1000 numbers (each with 210 destinations); Fax polling supported (poll to receive only); Fax memory (letter and A4): up to 500 pages		
<b>Processor</b>	1.2 GHz ( <i>all models</i> )		
<b>Memory</b>	Standard: 1.25 GB (printer), 500 MB (scanner); Maximum: 2.75 GB memory, when Accessory DIMM is installed		

	HP LaserJet Enterprise MFP M528dn	HP LaserJet Enterprise MFP M528f	HP LaserJet Enterprise Flow MFP M528z
<b>Durability ratings</b>			
RMPV <sup>39</sup>	2,000 pages to as high as 7,500 pages ( <i>all models</i> )		
RMSV <sup>28</sup>	4,000 to as high as 7,000 pages	8,000 to as high as 14,000 pages	
Duty cycle <sup>40</sup>	Up to 150,000 pages ( <i>all models</i> )		
<b>Media specifications</b>			
Input capacity	Up to 650/2,300 sheets (standard/maximum <sup>18</sup> ) ( <i>all models</i> ) Tray 1: up to 100 sheets Tray 2: up to 550 sheets		
Output capacity	Up to 250 sheets ( <i>all models</i> )	Plus: Convenience stapler <sup>19</sup> ( <i>f/z models only</i> )	
Two-sided printing	Automatic ( <i>all models</i> )		
Media sizes	Tray 1: A4, A5, A6, RA4, B5 (JIS), B6 (JIS), 10 x 15 cm, Oficio (216 x 340 mm), 16K, postcards (JIS single and double), envelopes (B5, C5, C6, B5, DL); Letter, legal, executive, statement, 3 x 5 in, 4 x 6 in, 5 x 7 in, 5 x 8 in, 8.5 x 13 in, envelopes (No. 9, No. 10, Monarch); Custom media: 76 x 127 to 216 x 356 mm (3 x 5 to 8.5 x 14 in) Tray 2, optional trays 3-5: A4, A5, A6, RA4, B5 (JIS), B6 (JIS), Oficio (216 x 340 mm), 16K, postcard (JIS double); Letter, legal, executive, statement, 5 x 7 in, 5 x 8 in, 8.5 x 13 in; Custom media: 105 x 148 to 216 x 356 mm (4.1 x 5.8 to 8.5 x 14 in) ADF: A4, RA4, A5, A6, B5, B6 (JIS), postcard (JIS), DPostcard (JIS); Letter, legal, Oficio, executive, statement, 16K, 4 x 6 in, 5 x 7 in, 5 x 8 in		
Media weights	Tray 1: 60 to 199 g/m <sup>2</sup> (16 to 53 lb) Tray 2, optional trays 3-5: 60 to 120 g/m <sup>2</sup> (16 to 32 lb) ADF: 45 to 199 g/m <sup>2</sup> (12 to 53 lb)		
Media types	Paper (bond, colour, letterhead, plain, pre-printed, pre-punched, recycled, rough), envelopes, labels, cardstock, transparencies, user-defined		
<b>Print languages</b>	HP PCL 6, HP PCL 5 (HP PCL 5 driver available from the Web only), HP postscript level 3 emulation, native PDF printing (v 1.7), Apple AirPrint <sup>41</sup>		
<b>Fonts</b>	105 internal TrueType fonts scalable in HP PCL, 92 internal scalable fonts in HP postscript Level 3 emulation (Euro symbol built-in), 1 internal Unicode font (Andale Mono World Type), 2 Internal Windows Vista 8 fonts (Calibri, Cambria), additional font solutions available via third-party flash memory cards, HP LaserJet fonts and IPDS Emulation available at <a href="http://hp.com/go/laserjetfonts">hp.com/go/laserjetfonts</a>		
<b>Connectivity</b>	2 Hi-Speed USB 2.0 Host; 1 Hi-Speed Device USB 2.0; 1 Gigabit Ethernet; Hardware Integration Pocket <sup>6</sup>		
		Plus: Fax	Plus: Fax; Dual-band Wi-Fi with Bluetooth Low Energy <sup>36</sup>
<b>Mobile printing</b>	Standard: Apple AirPrint, <sup>41</sup> HP ePrint, <sup>42</sup> Mopria-certified, HP Roam capable for easy printing, <sup>34</sup> Google Cloud Print 2.0		
			Plus: Wireless direct printing
	Optional: Wireless direct printing, <sup>31</sup> NFC touch-to-print <sup>32</sup>		Optional: NFC touch-to-print <sup>32</sup>
<b>Network capabilities</b>	Standard: via HP Jetdirect Ethernet embedded print server supports: 10Base-T, 100Base-Tx, 1000Base-T; 802.3az (EEE) support on Fast Ethernet and Gig links; IPsec (standard)		
			Plus: 802.11b/g/n wireless networking and second Ethernet port <sup>30</sup>
	Optional: 802.11b/g/n wireless networking and second Ethernet port <sup>30</sup>		
<b>Network protocols</b>	Via built-in networking solution: TCP/IP, IPv4, IPv6 Print: TCP-IP port 9100 Direct Mode, LPD (raw queue support only), Web Services Printing, IPP 2.0, Apple AirPrint, <sup>41</sup> HP ePrint, <sup>42</sup> FTP Print, Google Cloud Print Discovery: SLP, Bonjour, Web Services Discovery; IP Config: IPv4 (BootP, DHCP, AutoIP, Manual, TFTP Config, ARP-Ping), IPv6 (Stateless Link-Local and via Router, Statefull via DHCPv6) Management: SNMPv2/v3, HTTP/HTTPS, Telnet, TFTP Config, Syslog Security: SNMPv3, SSL Cert Management, IPSec/Firewall, ACL, 802.1x		

	HP LaserJet Enterprise MFP M528dn	HP LaserJet Enterprise MFP M528f	HP LaserJet Enterprise Flow MFP M528z
<b>Security</b>	<p>Identity Management: Kerberos authentication, LDAP authentication, 1000 user PIN codes, optional HP and third-party advanced authentication solutions (e.g., badge readers)</p> <p>Network: IPsec/firewall with Certificate, Pre-Shared Key, Kerberos authentication; Supports WJA-10 IPsec configuration Plug-in, 802.1X authentication (EAP-PEAP, EAP-TLS), SNMPv3, HTTPS, Certificates, Access Control List, HP Trusted Platform Module (TPM) comes standard</p> <p>Data: Storage Encryption, Encrypted PDF and Email (uses FIPS 140 validated cryptographic libraries from Microsoft), Secure Erase, SSL/TLS (HTTPS), Encrypted Credentials</p> <p>Device: Security lock slot, USB port disablement, Hardware Integration Pocket for security solutions,<sup>6</sup> Intrusion Detection with Red Balloon Security Technology (constant in-device monitoring for attacks), HP Sure Start Secure Boot (BIOS integrity checking with self-healing capability), Whitelisting (loads only known-good code (DLLs, EXEs, etc.)), HP Connection Inspector (helps ensure network connections to device are safe)</p> <p>Security management: Compatible with HP JetAdvantage Security Manager,<sup>9</sup> HP Printer Security Plugin for Microsoft SCCM, Device Security Syslog messages processed and accessible in Arcsight, Splunk, McAfee (ESM), and SIEMonster SIEMs</p> <p>For more security settings, go to <a href="http://hp.com/ctg/Manual/c03602120">hp.com/ctg/Manual/c03602120</a></p>		
<b>Printer management</b>	<p>HP Device Toolbox, HP JetAdvantage Security Manager,<sup>9</sup> HP Printer Assistant, HP Web Jetadmin Software,<sup>8</sup> HP SNMP Proxy Agent, HP WS Pro Proxy Agent, Printer Administrator Resource Kit for HP Universal Print Driver<sup>12</sup> (Driver Configuration Utility, Driver Deployment Utility, Managed Printing Administrator)</p>		
<b>Compatible operating systems<sup>43</sup></b>	<p>Windows Client OS (32- and 64-bit): Win10, Win8 Basic, Win8 Pro, Win8 Enterprise, Win8 Enterprise N, Win7 Starter Edition SP1, UPD<sup>12</sup> Win7 Ultimate</p> <p>Apple Mac OS: Sierra 10.12, High Sierra 10.13, Mojave 10.14</p> <p>Mobile OS: Android</p> <p>Discrete PCL6 Printer Driver – Supported operating systems: For more information, go to <a href="http://support.hp.com">support.hp.com</a></p> <p>UPD<sup>12</sup> PCL6/PS Printer Drivers – Supported operating systems: For more information, go to <a href="http://hp.com/go/upd">hp.com/go/upd</a></p>		
<b>Compatible network operating systems</b>	<p>Windows Server 2008 R2 64-bit, Windows Server 2008 R2 64-bit (SP1), Windows Server 2012 64-bit, Windows Server 2012 R2 64-bit, Windows Server 2016 64-bit, Failover Cluster 2008 R2, Failover Cluster 2012 R2, Terminal Server 2008 R2, Remote Desktop Server 2012 R2</p> <p>Citrix Server 6.5, Citrix XenApp and XenDesktop 7.6, Citrix Ready Kit Certification – up to Citrix Server 7.18; For more information, see <a href="http://citrixready.citrix.com">citrixready.citrix.com</a></p> <p>Novell iPrint Server</p> <p>Linux: For more information, see <a href="http://developers.hp.com/hp-linux-imaging-and-printing">developers.hp.com/hp-linux-imaging-and-printing</a></p> <p>UPD<sup>12</sup> PCL6/PS Printer Drivers; Supported for Compatible network operating systems, please see <a href="http://hp.com/go/upd">hp.com/go/upd</a></p>		
<b>System requirements, Windows</b>	<p>A compatible operating system (see above); 2 GB available hard disk space; Internet connection, USB port, Internet browser, OS compatible hardware (For OS hardware requirements see <a href="http://microsoft.com">microsoft.com</a>)</p>		
<b>System requirements, Macintosh</b>	<p>A compatible operating system (see above); 2 GB available hard disk space; Internet connection or USB port; OS-compatible hardware (For OS hardware requirements see <a href="http://apple.com">apple.com</a>)</p>		
<b>Software included</b>	<p>No software solutions are included in the box; HP Scan and TWAIN driver available for download: <a href="http://hp.com/support">hp.com/support</a></p>		
<b>Dimensions (width x depth x height)</b>	<p>Operating: 482 x 496 x 497 mm (18.98 x 19.52 x 19.55 in)</p> <p>Maximum:<sup>44</sup> 507 x 631 x 497 mm (19.96 x 24.83 x 19.55 in)</p>		
<b>Weight (with print cartridge)</b>	21.41 kg (47.56 lb)	21.95 kg (48.76 lb)	22.13 kg (49.16 lb)
<b>What's in the box</b>	<p>HP LaserJet Enterprise MFP, HP Black LaserJet set-up cartridge (~7,500 pages),<sup>25</sup> Power cord, User guide, Support flyers, Warranty cards, Required erratas</p>		
<b>Downloadable software</b>	<p>From <a href="http://123.hp.com">123.hp.com</a>: HP Easy Start (Guided Software Install for Windows and Mac)</p> <p>From <a href="http://hp.com">hp.com</a> for Windows OS: Full solution software and drivers, Basic solution software and drivers, HP PCL6 XPS Discrete Print Driver, Product Documentation and Support</p> <p>From <a href="http://hp.com">hp.com</a> for Mac OS: HP Easy Start (Guided Software Install), HP Mac PS Print Driver, HP Easy Admin</p> <p>For Mobile OS, iOS: For more information, see <a href="http://hp.com/go/businessmobileprinting">hp.com/go/businessmobileprinting</a>; Android: For more information, see <a href="http://hp.com/go/businessmobileprinting">hp.com/go/businessmobileprinting</a></p> <p>From <a href="http://hp.com">hp.com</a> for printer administrators: Printer Administrator Resource Kit (Driver Configuration Utility, Driver Deployment Utility, Managed Printing Administrator), HP Universal Print Drivers (PCL6 GDI and PS GDI for Windows),<sup>12</sup> HP ePrint Software<sup>42</sup> (Mobile Driver for Windows), SAP Print Drivers (For more information, see <a href="http://support.hp.com/us-en/document/c05051702">support.hp.com/us-en/document/c05051702</a>), HP Web Jetadmin,<sup>8</sup> HP JetAdvantage Security Manager,<sup>9</sup> ReadIris, HP Roam for Business,<sup>34</sup> HPLIP Linux Printer Driver (For more information, see <a href="http://hplipopensource.com/hplip-web/index.html">http://hplipopensource.com/hplip-web/index.html</a>), Unix Model Script Printer Driver: <a href="http://support.hp.com/us-en/document/c04222920">support.hp.com/us-en/document/c04222920</a></p>		
<b>Warranty</b>	<p>One-year, next-business day, onsite warranty. Warranty and support options vary by product, country, and local legal requirements. Contact your contractual partner or go to <a href="http://hp.com/support">hp.com/support</a> to learn about HP world-class service and support options in your region.</p>		



# HP LaserJet Enterprise MFP M528 series environmental specifications

	HP LaserJet Enterprise MFP M528dn	HP LaserJet Enterprise MFP M528f	HP LaserJet Enterprise Flow MFP M528z
<b>Environmental ranges</b>			
Temperatures	Recommended operating: 15 to 27° C (59 to 80.6° F); Operating: 10 to 32.5° C (50 to 90.5° F); Storage: -20 to 40° C (-4 to 104° F)		
Relative Humidity	Recommended operating range: 30 to 70% RH; Operating range: 10 to 80% RH		
<b>Acoustic pressure emissions</b> <sup>45</sup>	Ready mode: 26 dB(A)	Ready mode: 26 dB(A)	Ready mode: 25 dB(A)
	Active print: 54 dB(A)	Active print: 54 dB(A)	Active print: 54 dB(A)
	Active scan: 52 dB(A)	Active scan: 52 dB(A)	Active scan: 52 dB(A)
<b>Acoustic power emissions</b>	Ready mode: 4.0 B(A); Active print: 6.8 B(A); <sup>46</sup> Active scan: 6.7 B(A) ( <i>all models</i> )		
<b>Power specifications</b> <sup>47</sup>			
Power supply	Built-in power supply; Input Voltage: 100 to 240 VAC, 50/60 Hz ( <i>all models</i> )		
Power consumption	Printing: 629 watts; Ready: 28.8 watts; Sleep: 5.3 watts; Auto-Off/Auto-On: 0.74 watts; Auto-Off/Wake on LAN: 0.06 watts		
Typical Electricity Consumption (TEC) <sup>49</sup>	Blue Angel: 1.414 kWh/week; ENERGY STAR: 1.4 kWh/week ( <i>all models</i> )		
Energy-saving features	HP Auto-On/Auto-Off Technology; <sup>21</sup> Instant-on Technology; <sup>22</sup> Instant-on Copy ( <i>all models</i> )		
<b>Environmental specifications</b>	Blue Angel compliant; ENERGY STAR certified; CECP; EPEAT Silver; <sup>48</sup> mercury-free		Blue Angel compliant; ENERGY STAR certified; CECP; EPEAT Gold; <sup>48</sup> mercury-free
<b>Safety and regulatory compliance</b>	IEC 60950-1:2005 +A1:2009 +A2:2013 (International); EN60950-1:2006 +A11:2009 +A1:2010 +A12:2011 +A2:2013 (EU); EN 60825-1:2014/IEC 60825-1:2014 (Class 1 Laser Product); EN 62479:2010/IEC 62479:2010; Low Voltage Directive 2014/35/EU with CE Mark (Europe); IEC 62471:2006/EN 62471:2008 (LED lighting); GS Certificate (Germany, Europe); UL/cUL Listed and UC CoC (US/Canada); CAN/CSA C22.2 No. 60950-1-07 2nd Ed. 2011-12; Compliance with Laser safety standards 21 CFR 1040.10 and 1040.11 except for deviations pursuant to Laser notice No. 50, Dated June 24, 2007; Other safety approvals as required by individual countries.		
<b>Electromagnetic emission standard</b>	CISPR 22:2008 (International) - Class A, CISPR32:2012 (International) - Class A, EN 55032: 2012 (EU) - Class A, EN 61000-3-2: 2014, EN 61000-3-3: 2013, EN 55024: 2010, EMC Directive 2014/30/EU, FCC CFR 47 Part 15 Class A/ICES-003, Issue 6 Class A. Other EMC approvals as required by individual countries.		

# Ordering information

<b>Product</b>	HP LaserJet Enterprise M507dn	1PV87A	
	HP LaserJet Enterprise M507x	1PV88A	
	HP LaserJet Enterprise MFP M528dn	1PV64A	
	HP LaserJet Enterprise MFP M528f	1PV65A	
	HP LaserJet Enterprise Flow MFP M528z	1PV67A	
<b>Supplies</b>	HP 89A Black Original LaserJet Toner Cartridge (~5,000 pages)	CF289A	
	HP 89X High Yield Black Original LaserJet Toner Cartridge (~10,000 pages)	CF289X	
	HP 89Y Extra High Yield Black Original LaserJet Toner Cartridge (~20,000 pages)	CF289Y	
	<b>MFP M528f and Flow MFP M528z models only:</b>		
	HP Staple Cartridge Refill (2 cartridges, 1,500 staples each)	Q7432A	
<b>Accessories</b>	HP LaserJet 550-sheet Paper Tray	F2A72A	
	HP LaserJet Printer Cabinet	F2A73A	
	HP Jetdirect 2900nw Print Server	J8031A	
	HP Jetdirect 3100w BLE/NFC/Wireless Accessory	3JN69A	
	HP Removable Hard Drive Enclosure	2NR12A	
	HP Internal USB Ports	B5L28A	
	HP Accessibility Assistant	2MU47A	
	HP USB Universal Card Reader	X3D03A	
	HP HIP2 Keystroke Reader	Y7C05A	
	HP Legic Card Reader	4QL32A	
	<b>M507 series only:</b>		
	HP 1 GB 90-Pin DDR3 DIMM	G6W84A	
	<b>M528dn only:</b>		
	HP Secure High-Performance Hard Disk Drive	B5L29A	
	HP LaserJet MFP Analog 700 Fax Accessory	2EH31A	
	<b>MFP M528 series only:</b>		
	HP 1 GB 144-Pin DDR3 800 MHz DIMM	E5K48A	
	HP 2 GB 144-Pin DDR3 800 MHz DIMM	E5K49A	
	HP Accessibility Kit	2TD64A	
	HP Foreign Interface Harness	B5L31A	
	<b>Flow MFP M528z model only:</b>		
	HP LaserJet Keyboard Overlay Kit-Sweden	A7W14A	
	<b>Solutions</b>	HP JetAdvantage Global Solution Center: <a href="http://hp.com/go/gsc">hp.com/go/gsc</a>	
		HP LaserJet fonts, barcodes, and IPDS Emulation: <a href="http://hp.com/go/laserjetfonts">hp.com/go/laserjetfonts</a>	
		HP Web Jetadmin: <a href="http://hp.com/go/wja">hp.com/go/wja</a>	
		HP Universal Print Driver: <a href="http://hp.com/go/upd">hp.com/go/upd</a>	
		HP JetAdvantage Security Manager: <a href="http://hp.com/go/securitymanager">hp.com/go/securitymanager</a> On-Demand Cloud Solutions: <a href="http://hpjetadvantage.com/ondemand">hpjetadvantage.com/ondemand</a>	

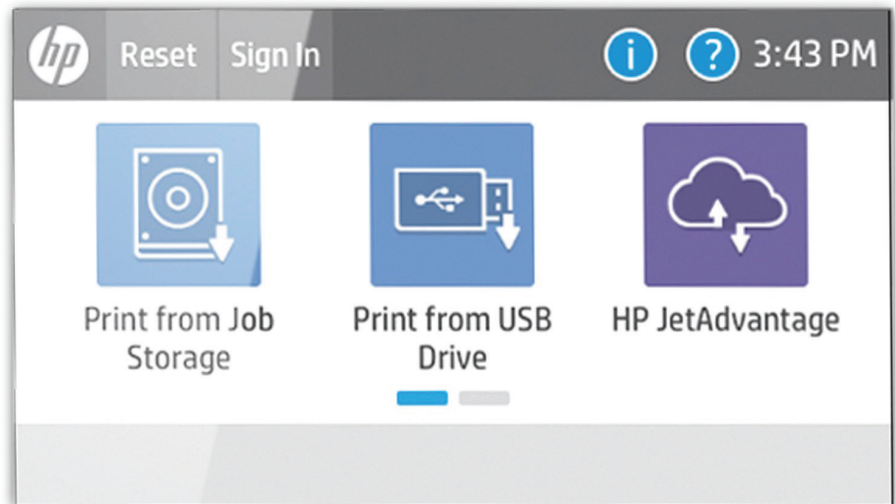
# Appendix A: Control panel features

## Upgrade to a modern interface

The HP LaserJet Enterprise M507 series and MFP M528 series are powered by HP FutureSmart 4 firmware. The modern, tablet like interface (20.3 cm on the MFP M528 series, 10.9 cm on the M507x printer) keeps things simple and intuitive across your fleet of Enterprise devices. A scalable control panel interface improves future extensibility and allows for customisation, along with a robust set of apps and usability features. You can even customise with your own wallpaper image and company logo. The new Message Center, with more detailed information and helpful animations, makes it easy to address device events. The simplified home screen displays just a few core apps by default. Additional apps are easily accessed by swiping right to left, like with a smartphone or tablet.



To access additional apps on the new printer user interface, simply swipe right to left

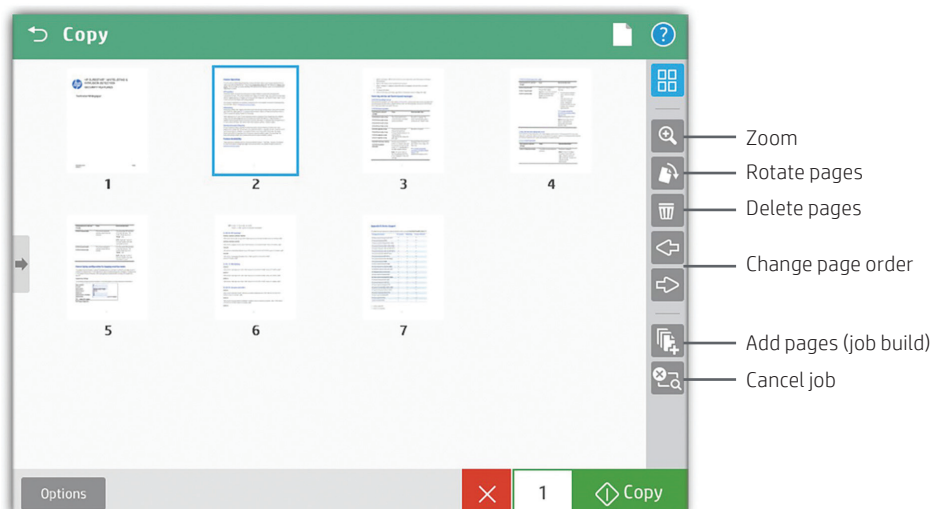


## Edit jobs right at the MFP

The control panel on the MFP M528 series features an enhanced image preview—now for both copies and scans. Right from the MFP's 20.3 cm colour touchscreen control panel, you can easily preview and edit scans before sending them. You can apply changes (like rotating) to a single page, or to multiple pages at once. Batch separation allows users to create separate PDF or PDF/A files from scanned pages. Flow models can also create PDF OCR and PDF/A OCR files.



The new MFP user interface enables swipe, rotate, and drag-and-drop capabilities



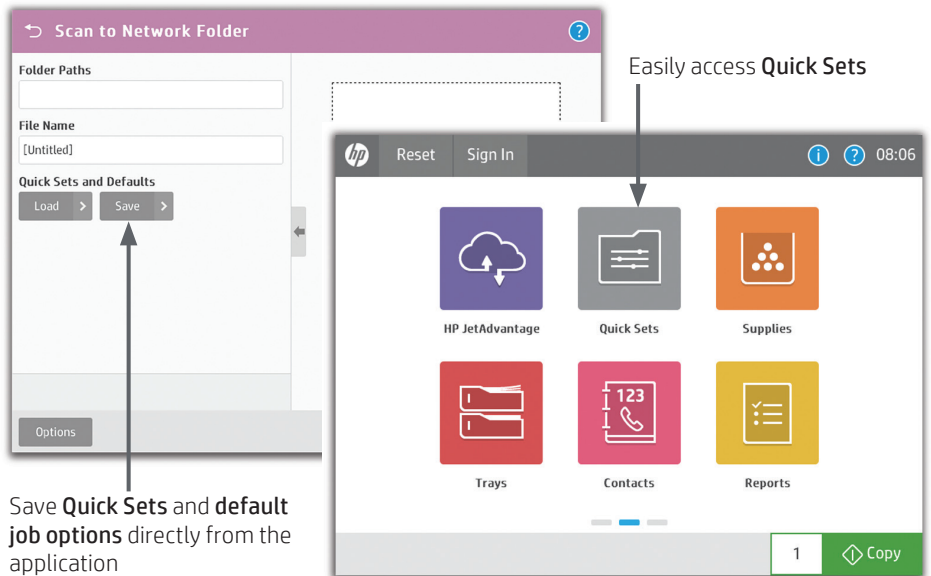
You can start a **preview** prior to committing to the copy job

## Use Quick Sets to launch automated workflows

The digital sending capability on MFP M528 models allows users to route documents to a variety of destinations like email recipients, network folders, fax, FTP, a USB device, or Microsoft SharePoint.

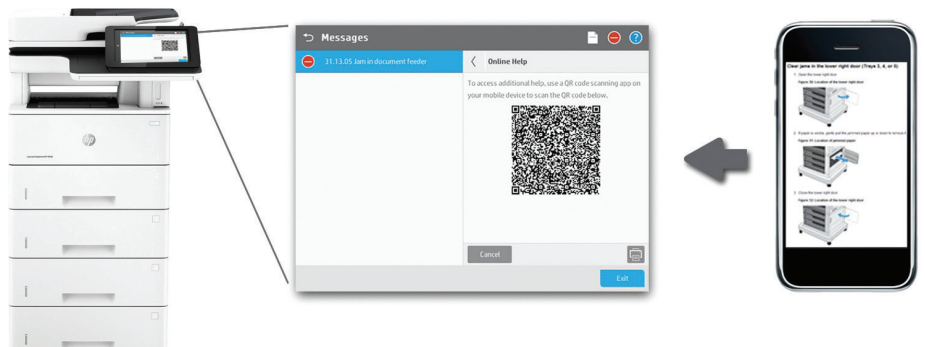
Quick Sets automate all of the steps of a complicated workflow and provide easy access to the configurations you use most, such as page size, resolution, and file format. You can also specify security settings, such as encrypted PDFs to be delivered through encrypted and signed emails.

Help users find what they need by moving individual Quick Sets to any screen or folder using the home screen customisation feature. With Quick Sets, IT can promote or block access to certain device features. Calls to the helpdesk can be reduced when users have everything they need and are restricted from accessing settings they shouldn't tamper with.



## Troubleshoot with ease

The HP LaserJet Enterprise M507 series and MFP M528 series can help save your IT department valuable time when it comes to troubleshooting problems. The Remote Control Panel allows users to operate the user interface remotely, so IT can troubleshoot problems without running to the printer or MFP.<sup>50</sup> Users can also quickly troubleshoot technical issues with HP's innovative, cloud-based Online Help services that are relevant and up to date. Easily solve problems from your PC or mobile device. A Quick Response (QR) code on the touchscreen links to Online Help using smart phones and tablets.<sup>51</sup> You can also find these links in the HP Embedded Web Server event log.



- <sup>1</sup> In July 2018, HP was named Buyers Lab's Most Reliable Business Printer & MFP Brand by the analysts at Buyers Lab (BLI), based on lab testing from 2012 to 2018. For more information, see [keypointintelligence.com/news/awards](http://keypointintelligence.com/news/awards).
- <sup>2</sup> Based on HP review of 2018 published security features of competitive in-class printers. Only HP offers a combination of security features for integrity checking down to the BIOS with self-healing capabilities. For a list of compatible products, visit [hp.com/go/printersthatprotect](http://hp.com/go/printersthatprotect). For more information, see [hp.com/go/printersecurityclaims](http://hp.com/go/printersecurityclaims).
- <sup>3</sup> Some features require additional purchase. A FutureSmart service pack update may be required to activate security features. Learn more at [hp.com/go/printsecurity](http://hp.com/go/printsecurity).
- <sup>4</sup> The encrypted HP High-Performance Secure Hard Disk is standard on the HP LaserJet Enterprise MFP M528f and Flow MFP M528z models and optional on the HP LaserJet Enterprise M507 series and MFP M528dn model.
- <sup>5</sup> HP Proximity Card Reader (CZ208a) is available for separate purchase for select HP devices with Hardware Integration Pocket (HIP) and touchscreen display.
- <sup>6</sup> Solutions deployed through the Hardware Integration Pocket (HIP) may require additional purchase. The HP LaserJet Enterprise M507 series and MFP M528 series come with a second-generation HIP.
- <sup>7</sup> Use of the HP Trusted Platform Module accessory may require a firmware upgrade.
- <sup>8</sup> HP Web Jetadmin is available for download at no additional charge at [hp.com/go/wja](http://hp.com/go/wja).
- <sup>9</sup> HP JetAdvantage Security Manager must be purchased separately. For details, see [hp.com/go/securitymanager](http://hp.com/go/securitymanager).
- <sup>10</sup> HP JetAdvantage Secure Print works with any network-connected printer or MFP. On-device authentication is available for many HP LaserJet, PageWide, and OfficeJet Pro devices and selected non-HP devices. Some devices may require a firmware upgrade. Internet connection required for cloud storage and retrieval of print jobs. Print-job release from a mobile device requires a network connection and QR code. For more information and a list of supported printers and MFPs, see [hp.com/go/JetAdvantageSecurePrint](http://hp.com/go/JetAdvantageSecurePrint).
- <sup>11</sup> Colour access control capabilities vary from device to device.
- <sup>12</sup> The HP Universal Print Driver is available for download at no additional charge at [hp.com/go/upd](http://hp.com/go/upd).
- <sup>13</sup> Measured using ISO/IEC 17629. Exact speed for first page out varies depending on the system configuration, software application, driver, and document complexity. Learn more at [hp.com/go/printerclaims](http://hp.com/go/printerclaims).
- <sup>14</sup> Measured after 15 minutes in sleep. Exact speed varies depending on the system configuration, software application, driver, document complexity, and time in sleep.
- <sup>15</sup> Measured using ISO/IEC 24734, excludes first set of test documents. For more information, see [hp.com/go/printerclaims](http://hp.com/go/printerclaims). Exact speed varies depending on the system configuration, software application, driver, and document complexity.
- <sup>16</sup> Scan speed measured from ADF at default 300 dpi (black-and-white, greyscale, and colour). Actual processing speeds may vary depending on scan resolution, network conditions, computer performance, and application software.
- <sup>17</sup> Requires an Internet connection to the printer. Services may require registration. App availability varies by country, language, and agreements. For details, see [hpconnected.com](http://hpconnected.com).
- <sup>18</sup> Purchase of optional paper trays required to reach maximum input capacity.
- <sup>19</sup> The convenience stapler is only available on the HP LaserJet Enterprise MFP M528f and Flow MFP M528z models.
- <sup>20</sup> The HP LaserJet Enterprise M507x model comes with a 10.9 cm touchscreen control panel. The M507dn model comes with a 6.9 cm display with 24-key pad. The M528 series comes with an 20.3 cm touchscreen control panel.
- <sup>21</sup> HP Auto-On/Auto-Off Technology capabilities are subject to printer and settings.
- <sup>22</sup> HP LaserJet products with Instant-on Technology use an innovative, quick-heating fuser system that warms rapidly and cools quickly, helping you conserve energy compared with products that use traditional fusing.
- <sup>23</sup> HP calculations based on Energy Star normalised TEC data comparing the HP LaserJet 500 series monochrome printers introduced in spring 2019 HP 89A/X/Y compared to HP 87A/X.
- <sup>24</sup> Programme availability varies. For more information, visit [hp.com/recycle](http://hp.com/recycle).
- <sup>25</sup> Approximate average yield based on ISO/IEC 19752 and continuous printing. Actual yield varies considerably based on content of printed pages and other factors. For details, see [hp.com/go/learnaboutsupplies](http://hp.com/go/learnaboutsupplies).
- <sup>26</sup> An administrator must enable the easy-access USB port before use.
- <sup>27</sup> The 100-sheet ADF can scan documents up to 216 x 356 mm, as well as up to 216 x 864 mm when "long scan size" is selected.
- <sup>28</sup> The HP LaserJet Enterprise Flow MFP M528z model has an RMSV of 8,000 to 14,000 pages. The HP LaserJet Enterprise MFP M528dn/f models have an RMSV of 4,000 to 7,000 pages. HP recommends that the number of scanned pages per month be within the stated range for optimum device performance, based on factors including supplies replacement intervals and device life over an extended warranty period.
- <sup>29</sup> Advanced workflow features are available on the Flow MFP M528z model only and include HP EveryPage, a pull-out keyboard, embedded capture functionality, built in OCR, plus automatic page orientation, cropping, and tone adjustment.
- <sup>30</sup> Wireless networking is standard on the HP LaserJet Enterprise Flow MFP M528z model only; all other models can add it with purchase of the HP Jetdirect 2900nw Print Server. Wireless performance is dependent on physical environment and distance from access point and may be limited during active VPN connections.
- <sup>31</sup> Wireless direct printing is standard on the HP LaserJet Enterprise M507x and Flow MFP M528z models only, and optional on all other models. It can be added with purchase of the HP Jetdirect 3100w BLE/NFC/Wireless Accessory (3JN69A). For details, see [hp.com/go/businessmobileprinting](http://hp.com/go/businessmobileprinting).
- <sup>32</sup> NFC touch-to-print is optional and can be added with purchase of the HP Jetdirect 3100w BLE/NFC/Wireless Accessory (3JN69A). Mobile device must support Near Field Communication (NFC)-enabled printing. For more information, see [hp.com/go/businessmobileprinting](http://hp.com/go/businessmobileprinting).
- <sup>33</sup> Wireless operations are compatible with 2.4 GHz operations only. App or software and HP ePrint account registration may also be required. Some features require purchase of an optional accessory. Learn more at [hp.com/go/mobileprinting](http://hp.com/go/mobileprinting)
- <sup>34</sup> Subscription or accessory may be required. For more information, visit [hp.com/go/roam](http://hp.com/go/roam). To enable HP Roam for Business, some devices may require firmware to be upgraded and an optional accessory to add Bluetooth Low Energy (BLE) beaconing capabilities. Customer can purchase the HP Jetdirect 3100w BLE/NFC/Wireless accessory or the RadBeacon USB.
- <sup>35</sup> Printing at some public printing locations may incur extra charges.
- <sup>36</sup> Dual-band Wi-Fi® with Bluetooth® Low Energy is standard on the HP LaserJet Enterprise M507x and the Flow MFP M528z models and optional on all other models with the addition of the HP Jetdirect 3100w BLE/NFC/Wireless Accessory (3JN69A). Wireless operations are compatible with 2.4 GHz and 5 GHz operations only. Wi-Fi is a registered trademark of Wi-Fi Alliance®. Bluetooth is a trademark owned by its proprietor and used by HP Inc. under licence. Learn more at [hp.com/go/mobileprinting](http://hp.com/go/mobileprinting).
- <sup>37</sup> Measured using ISO 24734 Feature Test, A5 Landscape Feed. Speed may vary based on content, PC, media orientation, and media type.
- <sup>38</sup> Expandable to 1.5 GB through 90-pin DDR3 DIMM.
- <sup>39</sup> HP recommends that the number of printed pages per month be within the stated range for optimum device performance, based on factors including supplies replacement intervals and device life over an extended warranty period.
- <sup>40</sup> Duty cycle is defined as the maximum number of pages per month of imaged output. This value provides a comparison of product robustness in relation to other HP LaserJet or HP Color LaserJet devices, and enables appropriate deployment of printers and MFPs to satisfy the demands of connected individuals or groups.
- <sup>41</sup> Supports the following devices running iOS 4.2 or later: iPad, iPad 2, iPhone (3GS or later), iPod touch (3rd generation or later). Works with HP's AirPrint-enabled printers and requires the printer be connected to the same network as your iOS device. Wireless performance is dependent on physical environment and distance from the access point.



<sup>42</sup> Printer requires ePrint account registration. App or software may be required. Wireless operations are compatible with 2.4 GHz operations only. Learn more at [hp.com/go/mobileprinting](http://hp.com/go/mobileprinting).

<sup>43</sup> Full solution software available only for Windows 7 and newer, UPD software available only for Windows® 7 and newer, HP Software for Mac and Windows is no longer included on the CD, but can be downloaded from [123.hp.com](http://123.hp.com), Legacy Windows Operating Systems (XP, Vista, and equivalent servers) get print and scan drivers only with a reduced feature set, Windows RT OS for Tablets (32- and 64-bit) uses a simplified HP print driver built into the RT OS.

<sup>44</sup> Maximum dimensions of the device are measured with all paper trays folded out and standard accessories installed.

<sup>45</sup> Acoustic values are subject to change. For current information, see [hp.com/support](http://hp.com/support).

<sup>46</sup> Configuration tested: base model, simplex printing, A4 paper at an average of 43 ppm.

<sup>47</sup> Power requirements are based on the country/region where the printer is sold. Do not convert operating voltages. This will damage the printer and void the product warranty. Energy Star value typically based on measurement of 115V device.

<sup>48</sup> EPEAT® registered where applicable. EPEAT registration varies by country. See [epeat.net](http://epeat.net) for registration status by country.

<sup>49</sup> Best TEC is not applicable to ES 2.0 TEC. This measurement was made with the printer configuration optimised for energy efficiency. Minimum sleep delay was used, Wi-Fi Direct was disabled and Active I/O - Energy Efficient Ethernet was used.

<sup>50</sup> Availability dependent on firmware or software updates or upgrades.

<sup>51</sup> Online Help must be enabled on the printer or MFP. Mobile device must have an Internet connection to access online services.

Sign up for updates  
[hp.com/go/getupdated](http://hp.com/go/getupdated)



---

© Copyright 2019 HP Development Company, L.P. The information contained herein is subject to change without notice. The only warranties for HP products and services are set forth in the express warranty statements accompanying such products and services. Nothing herein should be construed as constituting an additional warranty. HP shall not be liable for technical or editorial errors or omissions contained herein.

Android, Google Cloud Print, and Google Chrome are trademarks of Google Inc. Apple, AirPrint, iPad, iPhone, and iPod touch are trademarks of Apple Inc. Bluetooth is a trademark owned by its proprietor and used by HP Inc. under licence. Citrix and XenDesktop are registered trademarks of Citrix Systems, Inc. and/or one more of its subsidiaries, and may be registered in the United States Patent and Trademark Office and in other countries. ENERGY STAR is a registered trademark owned by the U.S. Environmental Protection Agency. Linux is the registered trademark of Linus Torvalds in the U.S. and other countries. Microsoft, SharePoint, Windows, Windows Vista, and Windows Server are U.S. registered trademarks of the Microsoft group of companies. UNIX is a registered trademark of The Open Group.

